

Product Datasheet

Donkey anti-Sheep IgG (H+L) Secondary Antibody [FITC] NB740-F

Unit Size: 0.5 mg

Store at 4C short term. Aliquot and store at -20C long term. Avoid freeze-thaw cycles.

www.novusbio.com



technical@novusbio.com

Protocols, Publications, Related Products, Reviews, Research Tools and Images at:
www.novusbio.com/NB740-F

Updated 10/23/2024 v.20.1

Earn rewards for product
reviews and publications.

Submit a publication at www.novusbio.com/publications

Submit a review at www.novusbio.com/reviews/destination/NB740-F



NB740-F

Donkey anti-Sheep IgG (H+L) Secondary Antibody [FITC]

Product Information	
Unit Size	0.5 mg
Concentration	Please see the vial label for concentration. If unlisted please contact technical services.
Storage	Store at 4C short term. Aliquot and store at -20C long term. Avoid freeze-thaw cycles.
Clonality	Polyclonal
Preservative	0.01% Sodium Azide
Isotype	IgG
Conjugate	FITC
Purity	Immunogen affinity purified
Buffer	0.02 M Potassium Phosphate, 0.15 M Sodium Chloride, pH 7.2, 10 mg/mL Bovine Serum Albumin (BSA) - Immunoglobulin and Protease free

Product Description	
Description	<p>For extended storage aliquot contents and freeze at -20C or below. Avoid cycles of freezing and thawing. Centrifuge product if not completely clear after standing at room</p> <p>This product was prepared from monospecific antiserum by immunoaffinity chromatography using Sheep IgG coupled to agarose beads. Assay by immunoelectrophoresis resulted in a single precipitin arc against anti-Fluorescein, anti-Donkey Serum, Sheep IgG and Sheep Serum.</p>
Host	Donkey
Species	Sheep
Immunogen	Sheep IgG whole molecule

Product Application Details	
Applications	Western Blot, Dot Blot, Fluorophore-linked immunosorbent assay, Flow Cytometry, Immunocytochemistry/ Immunofluorescence, Immunohistochemistry, Immunohistochemistry-Paraffin
Recommended Dilutions	Western Blot 1:250 - 1:500, Flow Cytometry 1:500 - 1:2500, Immunohistochemistry, Immunocytochemistry/ Immunofluorescence 1:1000 - 1:5000, Immunohistochemistry-Paraffin 1:200 - 1:500, Dot Blot, Fluorophore-linked immunosorbent assay 1:10000 - 1:50000
Application Notes	This product has been tested by dot blot and is designed for immunofluorescence microscopy, fluorescence based plate assays (FLISA) and fluorescent western blotting. This product is also suitable for multiplex analysis, including multicolor imaging, utilizing various commercial platforms.



Images

Dot Blot: Donkey anti-Sheep IgG (H+L) Secondary Antibody [FITC]
[NB740-F] - Dot Blot of Donkey anti-Sheep IgG (H+L) Secondary
Antibody [FITC].

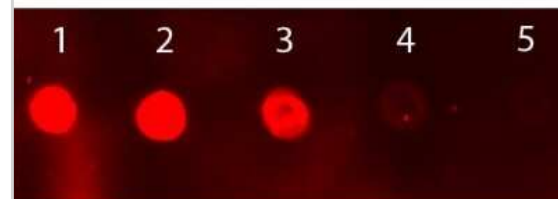
Antigen: Sheep IgG

Load: Lane 1 - 50 ng Lane 2 - 16.67 ng Lane 3 - 5.56 ng Lane 4 - 1.85
ng Lane 5 - 0.62 ng.

Primary antibody: none.

Secondary antibody: Donkey anti-Sheep IgG (H+L) Secondary Antibody
[FITC] 1:1000 for 60 min at RT.

Block: Fluorescent blocking buffer for 1 HR at RT.





Novus Biologicals USA

10730 E. Briarwood Avenue
Centennial, CO 80112
USA
Phone: 303.730.1950
Toll Free: 1.888.506.6887
Fax: 303.730.1966
nb-customerservice@bio-techne.com

Bio-Techne Canada

21 Canmotor Ave
Toronto, ON M8Z 4E6
Canada
Phone: 905.827.6400
Toll Free: 855.668.8722
Fax: 905.827.6402
canada.inquires@bio-techne.com

Bio-Techne Ltd

19 Barton Lane
Abingdon Science Park
Abingdon, OX14 3NB, United Kingdom
Phone: (44) (0) 1235 529449
Free Phone: 0800 37 34 15
Fax: (44) (0) 1235 533420
info.EMEA@bio-techne.com

General Contact Information

www.novusbio.com
Technical Support: nb-technical@bio-techne.com
Orders: nb-customerservice@bio-techne.com
General: novus@novusbio.com

Limitations

This product is for research use only and is not approved for use in humans or in clinical diagnosis. Secondary Antibodies are guaranteed for 1 year from date of receipt.

For more information on our 100% guarantee, please visit www.novusbio.com/guarantee

Earn gift cards/discounts by submitting a review: www.novusbio.com/reviews/submit/NB740-F

Earn gift cards/discounts by submitting a publication using this product:
www.novusbio.com/publications

