

Product Datasheet

CD68/SR-D1 Antibody (ED1) [PE] NB600-985PE

Unit Size: 0.125 ml

Store at 4C in the dark.

www.novusbio.com



technical@novusbio.com

Publications: 1

Protocols, Publications, Related Products, Reviews, Research Tools and Images at:
www.novusbio.com/NB600-985PE

Updated 10/23/2024 v.20.1

Earn rewards for product
reviews and publications.

Submit a publication at www.novusbio.com/publications

Submit a review at www.novusbio.com/reviews/destination/NB600-985PE



NB600-985PE

CD68/SR-D1 Antibody (ED1) [PE]

| Product Information | |
|---------------------|---|
| Unit Size | 0.125 ml |
| Concentration | Please see the vial label for concentration. If unlisted please contact technical services. |
| Storage | Store at 4C in the dark. |
| Clonality | Monoclonal |
| Clone | ED1 |
| Preservative | 0.05% Sodium Azide |
| Isotype | IgG1 |
| Conjugate | PE |
| Purity | Protein A or G purified |
| Buffer | PBS |

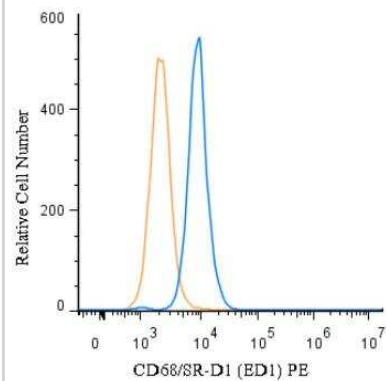
| Product Description | |
|-------------------------|--|
| Description | This conjugate is made on demand. Actual recovery may vary from the stated volume of this product. The volume will be greater than or equal to the unit size stated on the datasheet. |
| Host | Mouse |
| Gene ID | 968 |
| Gene Symbol | CD68 |
| Species | Rat |
| Reactivity Notes | Mouse reactivity reported in scientific literature (PMID: 28747511). Monkey reactivity reported from a verified customer review. |
| Marker | Macrophage Marker |
| Specificity/Sensitivity | This CD68/SR-D1 Antibody (ED1) recognizes a single chain glycoprotein of 110 kDa that is expressed predominantly on the lysosomal membrane of myeloid cells. Weak cell surface expression also occurs. The antigen is expressed by the majority of tissue macrophages and weakly by peripheral blood granulocytes. Studies have shown that the antigen recognized by ED1 is the rat homologue of human CD68. |
| Immunogen | Rat spleen cells |

| Product Application Details | |
|-----------------------------|---|
| Applications | Western Blot, Flow Cytometry, Flow (Intracellular), Immunocytochemistry/Immunofluorescence, Immunohistochemistry, Immunohistochemistry-Frozen, Immunohistochemistry-Paraffin, Immunoprecipitation, Radioimmunoassay |
| Recommended Dilutions | Western Blot, Flow Cytometry, Immunohistochemistry, Immunocytochemistry/Immunofluorescence, Immunoprecipitation, Immunohistochemistry-Paraffin, Immunohistochemistry-Frozen, Radioimmunoassay, Flow (Intracellular) |



Images

Flow (Intracellular): CD68/SR-D1 Antibody (ED1) [PE] [NB600-985PE] - An intracellular stain was performed on U-937 cells with CD68/SR-D1 Antibody (ED1) NB600-985PE (blue) and a matched isotype control (orange). Cells were fixed with 4% PFA and then permeabilized with 0.1% saponin. Cells were incubated in an antibody dilution of 5 ug/mL for 30 minutes at room temperature. Both antibodies were conjugated to phycoerythrin.



Publications

Komegae EN, Fonseca MT, da Silveira Cruz-Machado S et al. Site-Specific Reprogramming of Macrophage Responsiveness to Bacterial Lipopolysaccharide in Obesity Front Immunol 2019-06-28 [PMID: 31316525]



Novus Biologicals USA

10730 E. Briarwood Avenue
Centennial, CO 80112
USA
Phone: 303.730.1950
Toll Free: 1.888.506.6887
Fax: 303.730.1966
nb-customerservice@bio-techne.com

Bio-Techne Canada

21 Canmotor Ave
Toronto, ON M8Z 4E6
Canada
Phone: 905.827.6400
Toll Free: 855.668.8722
Fax: 905.827.6402
canada.inquires@bio-techne.com

Bio-Techne Ltd

19 Barton Lane
Abingdon Science Park
Abingdon, OX14 3NB, United Kingdom
Phone: (44) (0) 1235 529449
Free Phone: 0800 37 34 15
Fax: (44) (0) 1235 533420
info.EMEA@bio-techne.com

General Contact Information

www.novusbio.com
Technical Support: nb-technical@bio-techne.com
Orders: nb-customerservice@bio-techne.com
General: novus@novusbio.com

Products Related to NB600-985PE

| | |
|-----------------|---|
| NBP1-97005PE | Mouse IgG1 Isotype Control (MG1) [PE] |
| NB600-985APC | CD68/SR-D1 Antibody (ED1) [Allophycocyanin] |
| NBP2-53081-50ug | Recombinant Human CD68/SR-D1 His Protein |
| 210-TA-005 | TNF-alpha [Unconjugated] |

Limitations

This product is for research use only and is not approved for use in humans or in clinical diagnosis. Primary Antibodies are guaranteed for 1 year from date of receipt.

For more information on our 100% guarantee, please visit www.novusbio.com/guarantee

Earn gift cards/discounts by submitting a review: www.novusbio.com/reviews/submit/NB600-985PE

Earn gift cards/discounts by submitting a publication using this product:
www.novusbio.com/publications

