

Product Datasheet

CD68/SR-D1 Antibody (ED1) - BSA Free NB600-985

Unit Size: 0.125 mg

Store at 4C short term. Aliquot and store at -20C long term. Avoid freeze-thaw cycles.

www.novusbio.com



technical@novusbio.com

Reviews: 2 Publications: 22

Protocols, Publications, Related Products, Reviews, Research Tools and Images at:
www.novusbio.com/NB600-985

Updated 2/21/2025 v.20.1

**Earn rewards for product
reviews and publications.**

Submit a publication at www.novusbio.com/publications

Submit a review at www.novusbio.com/reviews/destination/NB600-985



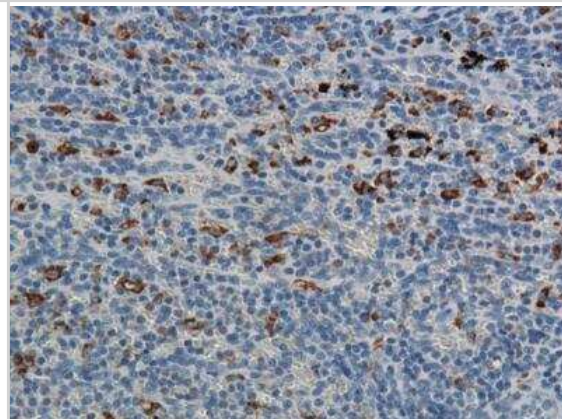
NB600-985

CD68/SR-D1 Antibody (ED1) - BSA Free

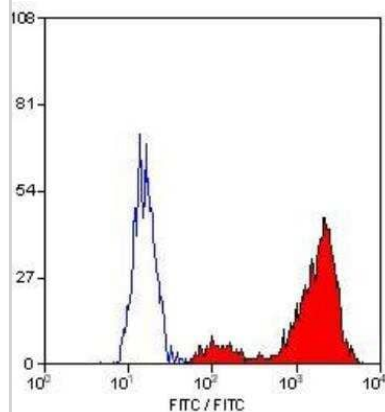
| Product Information | |
|------------------------------------|---|
| Unit Size | 0.125 mg |
| Concentration | 1.0 mg/ml |
| Storage | Store at 4C short term. Aliquot and store at -20C long term. Avoid freeze-thaw cycles. |
| Clonality | Monoclonal |
| Clone | ED1 |
| Preservative | 0.09% Sodium Azide |
| Isotype | IgG1 |
| Purity | Protein A purified |
| Buffer | PBS |
| Product Description | |
| Host | Mouse |
| Gene ID | 968 |
| Gene Symbol | CD68 |
| Species | Rat |
| Reactivity Notes | Predicted cross-reactivities: Bovine |
| Marker | Macrophage Marker |
| Specificity/Sensitivity | This CD68/SR-D1 Antibody (ED1) recognizes a single chain glycoprotein of 110 kDa that is expressed predominantly on the lysosomal membrane of myeloid cells. Weak cell surface expression also occurs. The antigen is expressed by the majority of tissue macrophages and weakly by peripheral blood granulocytes. Studies have shown that the antigen recognized by ED1 is the rat homologue of human CD68. |
| Immunogen | Rat spleen cells |
| Product Application Details | |
| Applications | Western Blot, Flow Cytometry, Flow (Intracellular), Immunocytochemistry/ Immunofluorescence, Immunohistochemistry, Immunohistochemistry-Frozen, Immunohistochemistry-Paraffin, Immunoprecipitation |
| Recommended Dilutions | Western Blot 1:100 - 1:2000, Flow Cytometry 1:50 - 1:100, Immunohistochemistry 1:10 - 1:500, Immunocytochemistry/ Immunofluorescence 1:10 - 1:500, Immunoprecipitation 1:10 - 1:500, Immunohistochemistry-Paraffin 1:100, Immunohistochemistry-Frozen 1:10 - 1:500, Flow (Intracellular) |
| Application Notes | Flow Cytometry: Use 10 uL of the suggested working dilution (1:50 - 1:100) to label 10 ⁶ cells in 100 uL. Membrane permeabilization is required for Flow Cytometry. Immunohistology on frozen and paraffin sections: Use at a dilution of 1:100, requires protein digestion pretreatment with pronase or trypsin. WB: Use at an assay dependent dilution. IP: Use at an assay dependent dilution. RIA: Use at an assay dependent dilution. |

Images

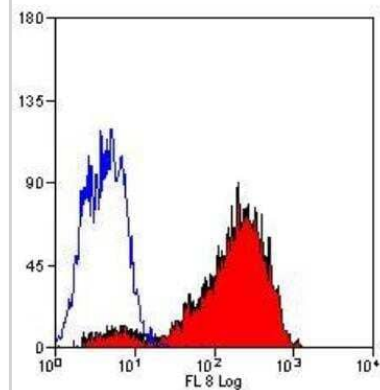
Immunohistochemistry-Paraffin: CD68/SR-D1 Antibody (ED1) [NB600-985] - Cynomolgus monkey spleen. IHC-P image submitted by a verified customer review.



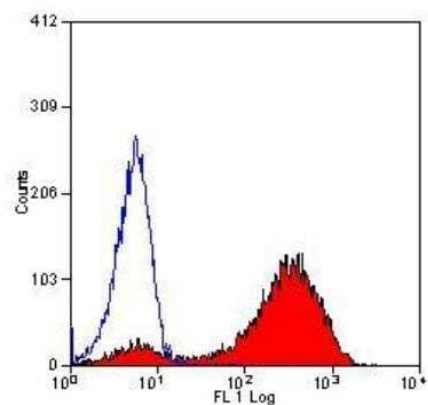
Flow Cytometry: CD68/SR-D1 Antibody (ED1) [NB600-985] - Staining of rat peritoneal macrophages cells.



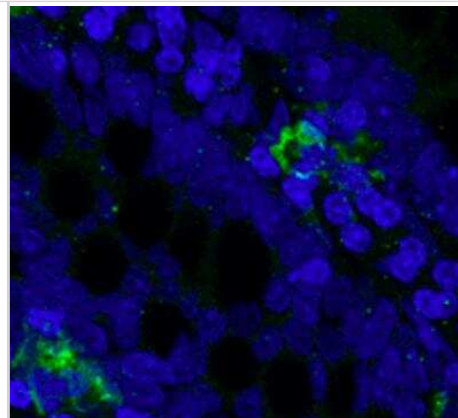
Flow Cytometry: CD68/SR-D1 Antibody (ED1) [NB600-985] - Staining of rat peritoneal macrophages.



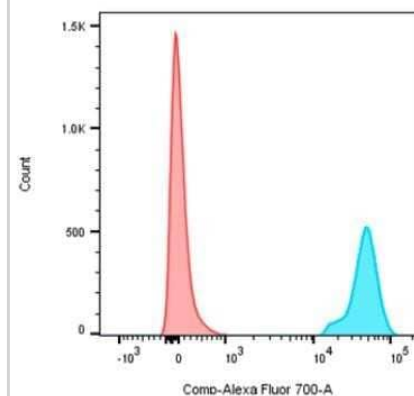
Flow Cytometry: CD68/SR-D1 Antibody (ED1) [NB600-985] - Staining of rat peritoneal macrophages



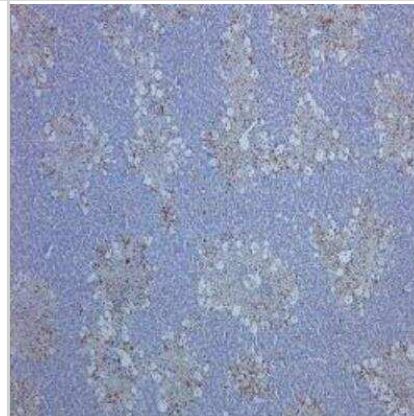
Immunohistochemistry-Frozen: CD68/SR-D1 Antibody (ED1) [NB600-985] - The feline macrophage containing section was incubated with the antibody at 1:50 and the section was further stained with Alexa secondary antibody. Image was captured with an epifluorescence microscope. IHC-Fr image submitted by a verified customer review.



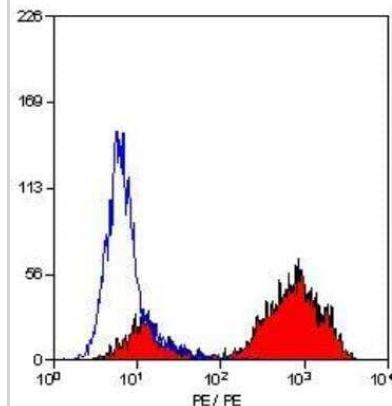
Flow Cytometry: CD68/SR-D1 Antibody (ED1) [NB600-985] - Decidual Macrophages were analyzed with a BD LSRFortessa. Antibody was diluted 1:100 in staining buffer before use. Isotype control is in Red. Sample with NB600-985AF700 is in Blue. Image from the Alexa Fluor 700 version of this antibody.



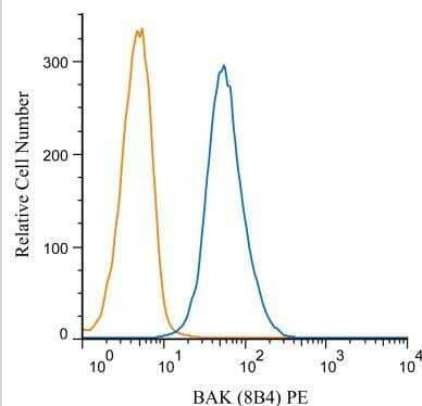
Immunohistochemistry-Paraffin: CD68/SR-D1 Antibody (ED1) [NB600-985] - Staining of rat liver



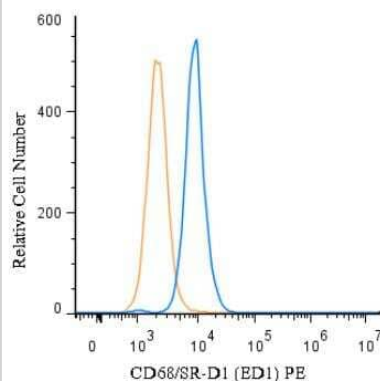
Flow Cytometry: CD68/SR-D1 Antibody (ED1) [NB600-985] - Staining of rat peritoneal macrophages cells.



Flow Cytometry: CD68/SR-D1 Antibody (ED1) [NB600-985] - An intracellular stain was performed on Jurkat cells with BAK antibody (8B4) NBP1-74026PE (blue) and a matched isotype control NB600-985PE (orange). Cells were fixed with 4% PFA and then permeabilized with 0.1% saponin. Cells were incubated in an antibody dilution of 1 ug/mL for 30 minutes at room temperature. Both antibodies were conjugated to phycoerythrin. Image using the PE form of this antibody.



Flow (Intracellular): CD68/SR-D1 Antibody (ED1) [NB600-985] - An intracellular stain was performed on U-937 cells with CD68/SR-D1 Antibody (ED1) NB600-985PE (blue) and a matched isotype control (orange). Cells were fixed with 4% PFA and then permeabilized with 0.1% saponin. Cells were incubated in an antibody dilution of 5 ug/mL for 30 minutes at room temperature. Both antibodies were conjugated to phycoerythrin.



Publications

Zhao B, Li M, Zhang H et Al. M1 polarization of hepatic macrophages in cows with subclinical ketosis is an important cause of liver injury J Dairy Sci 2024-12-06 [PMID: 39647630]

L Li, ZC Yao, A Parian, YH Yang, J Chao, J Yin, KJ Salimian, SK Reddy, A Zaheer, SL Gearhart, HQ Mao, FM Selaru A nanofiber-hydrogel composite improves tissue repair in a rat model of Crohn's disease perianal fistulas Science Advances, 2023-01-04;9(1):eade1067. 2023-01-04 [PMID: 36598982]

Keyan Hu, Lei Liu, Songtao Tang, Xin Zhang, Hongfeng Chang, Wenyang Chen, Taotao Fan, Lesha Zhang, Bing Shen, Qiu Zhang MicroRNA-221-3p inhibits the inflammatory response of keratinocytes by regulating the DYRK1A/STAT3 signaling pathway to promote wound healing in diabetes Communications Biology 2024-03-09 [PMID: 38461326]

Baldeon-Gutierrez R, Ohkura N, Yoshiba K et al. Wound-healing Processes After Pulpotomy in the Pulp Tissue of Type 1 Diabetes Mellitus Model Rats Journal of endodontics 2023-11-07 [PMID: 37939821]

Haba D, Ohmiya T, Sekino M et al. Efficacy of wearable vibration dressings on full-thickness wound healing in a hyperglycemic rat model Wound repair and regeneration : official publication of the Wound Healing Society [and] the European Tissue Repair Society 2023-11-11 [PMID: 37950849] (IHC-P, Rat)

Yarla NS, Pathuri G, Gali H et al. Discovery and Development of a Novel mPGES-1/5-LOX Dual Inhibitor LFA-9 for Prevention and Treatment of Chronic Inflammatory Diseases Journal of Inflammation Research 2020-12-31 [PMID: 33408499] (Western Blot)

Northrup HM Effects of Treatments on the Geometry and Vascular Biomechanics of Arteriovenous Fistulas in Rodents and Patients Thesis 2022-01-01

Baek JJ Treatment During Abstinence from Methamphetamine in a Rat Model of Methamphetamine Use Disorder Thesis 2022-01-01 (WB, Rat)

Al-Qazazi R, Lima PDA, Prisco SZ Et al. Macrophage-NLRP3 Activation Promotes Right Ventricle Failure in Pulmonary Arterial Hypertension Am J Respir Crit Care Med 2022-06-14 [PMID: 35699679] (FLOW, Rat)

Details:

Citation using the Alexa Fluor 700 version of this antibody.

Somarathna M, Hwang PT, Millican RC Et al. Nitric oxide releasing nanomatrix gel treatment inhibits venous intimal hyperplasia and improves vascular remodeling in a rodent arteriovenous fistula Biomaterials 2021-11-18 [PMID: 34836683] (IHC-P, Rat)

Roy Bc, Ahmed I, Stubbs J Et Al. DCLK1 isoforms and aberrant Notch signaling in the regulation of human and murine colitis Cell death discovery 2021-06-17 [PMID: 34226497] (IHC-P)

Schlotter F, de Freitas RCC, Rogers MA Et al. ApoC-III is a novel inducer of calcification in human aortic valves J Biol Chem 2020-12-18 [PMID: 33334888] (FLOW, Human)

Details:

Citation using the PE version of this antibody.

More publications at <http://www.novusbio.com/NB600-985>



Novus Biologicals USA

10730 E. Briarwood Avenue
Centennial, CO 80112
USA
Phone: 303.730.1950
Toll Free: 1.888.506.6887
Fax: 303.730.1966
nb-customerservice@bio-techne.com

Bio-Techne Canada

21 Canmotor Ave
Toronto, ON M8Z 4E6
Canada
Phone: 905.827.6400
Toll Free: 855.668.8722
Fax: 905.827.6402
canada.inquires@bio-techne.com

Bio-Techne Ltd

19 Barton Lane
Abingdon Science Park
Abingdon, OX14 3NB, United Kingdom
Phone: (44) (0) 1235 529449
Free Phone: 0800 37 34 15
Fax: (44) (0) 1235 533420
info.EMEA@bio-techne.com

General Contact Information

www.novusbio.com
Technical Support: nb-technical@bio-techne.com
Orders: nb-customerservice@bio-techne.com
General: novus@novusbio.com

Products Related to NB600-985

| | |
|------------------|---|
| HAF007 | Goat anti-Mouse IgG Secondary Antibody [HRP] |
| NB720-B | Rabbit anti-Mouse IgG (H+L) Secondary Antibody [Biotin] |
| NBP1-97005-0.5mg | Mouse IgG1 Isotype Control (MG1) |
| NB600-985AF700 | CD68/SR-D1 Antibody (ED1) [Alexa Fluor® 700] |

Limitations

This product is for research use only and is not approved for use in humans or in clinical diagnosis. Primary Antibodies are guaranteed for 1 year from date of receipt.

For more information on our 100% guarantee, please visit www.novusbio.com/guarantee

Earn gift cards/discounts by submitting a review: www.novusbio.com/reviews/submit/NB600-985

Earn gift cards/discounts by submitting a publication using this product:
www.novusbio.com/publications

