

Product Datasheet

PINK1 Antibody - BSA Free

NB600-973-0.5mg

Unit Size: 0.5 mg

Store at -20C. Avoid freeze-thaw cycles.

www.novusbio.com



technical@novusbio.com

Publications: 4

Protocols, Publications, Related Products, Reviews, Research Tools and Images at:
www.novusbio.com/NB600-973

Updated 2/21/2025 v.20.1

Earn rewards for product
reviews and publications.

Submit a publication at www.novusbio.com/publications

Submit a review at www.novusbio.com/reviews/destination/NB600-973



NB600-973-0.5mg

PINK1 Antibody - BSA Free

Product Information

Unit Size	0.5 mg
Concentration	Please see the vial label for concentration. If unlisted please contact technical services.
Storage	Store at -20C. Avoid freeze-thaw cycles.
Clonality	Polyclonal
Preservative	0.02% Sodium Azide
Isotype	IgG
Purity	Peptide affinity purified
Buffer	PBS, pH 7.2, containing 50% glycerol
Target Molecular Weight	62.7 kDa

Product Description

Host	Rabbit
Gene ID	65018
Gene Symbol	PINK1
Species	Human, Mouse, Rat
Specificity/Sensitivity	PINK1 polyclonal antibody recognizes primarily the full length protein at about 66 kDa in human, mouse, and rat tissues. In addition, a truncated form of the protein at about 33 kDa is also detected.
Immunogen	PINK1 antibody was developed using a synthetic peptide from human PINK1, corresponding to amino acids 484-504 Human:LVRALLQREASKRPSARVAAN Mouse:LVRsLLQREASKRPSARVAAN

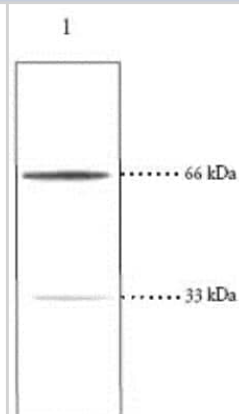
Product Application Details

Applications	Western Blot, Immunocytochemistry/ Immunofluorescence, Immunohistochemistry, Immunohistochemistry-Frozen, Immunohistochemistry-Paraffin
Recommended Dilutions	Western Blot 1:150, Immunohistochemistry 4ug/ml, Immunocytochemistry/ Immunofluorescence, Immunohistochemistry-Paraffin 4ug/ml, Immunohistochemistry-Frozen
Application Notes	IHC-Frozen reactivity reported in (PMID: 23013868), IHC-P reactivity reported in (PMID: 26935412).

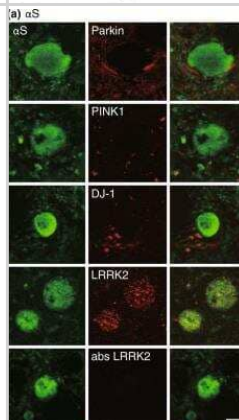


Images

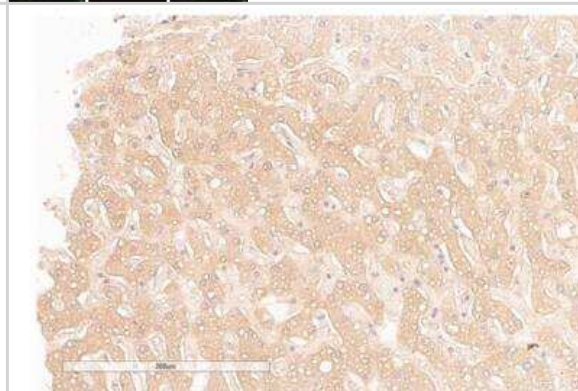
Western Blot: PINK1 Antibody [NB600-973] - Lane 1: The primary band with the observed molecular weight of 66 kDa was detected in mouse liver (30ug). Also, a truncated form of the protein at about 33 kDa was detected.



Immunocytochemistry/Immunofluorescence: PINK1 Antibody [NB600-973] - LRRK2 accumulates in globules in alphaS tg mice. Double immunofluorescence for alphaS with parkin, PINK1, DJ-1, LRRK2, or negative control (the immunopeptide-preabsorbed anti-LRRK2 antibody) in alphaS tg mice. Scale bar = 5 um for all panels. Image collected and cropped by CiteAb from the following publication (<https://molecularbrain.biomedcentral.com/articles/10.1186/1756-6606-5-34>) licensed under a CC-BY license.



Immunohistochemistry-Paraffin: PINK1 Antibody [NB600-973] - Staining in human liver tissue using a 1:200 dilution.



Publications

Tu M, Tan VP, Yu JD et al. RhoA signaling increases mitophagy and protects cardiomyocytes against ischemia by stabilizing PINK1 protein and recruiting Parkin to mitochondria Cell death and differentiation 2022-06-27 [PMID: 35760846] (WB, Human, Rat)

Horibe A, Eid N, Ito Y et al. Ethanol-Induced Autophagy in Sertoli Cells Is Specifically Marked at Androgen-Dependent Stages of the Spermatogenic Cycle: Potential Mechanisms and Implications. Int J Mol Sci 2019-01-06 [PMID: 30621351] (WB, Rat)

Eid N, Ito Y, Horibe A, Otsuki Y. Ethanol-induced mitophagy in liver is associated with activation of the PINK1-Parkin pathway triggered by oxidative DNA damage. Histol. Histopathol. 2016-03-03 [PMID: 26935412] (IHC-P, Rat)

Sekigawa A, Fujita M, Sekiyama K et al. Distinct mechanisms of axonal globule formation in mice expressing human wild type alpha-synuclein or dementia with Lewy bodies-linked P123H beta-synuclein. Mol Brain. 2012-09-26 [PMID: 23013868] (IHC-Fr, Mouse)



Novus Biologicals USA

10730 E. Briarwood Avenue
Centennial, CO 80112
USA
Phone: 303.730.1950
Toll Free: 1.888.506.6887
Fax: 303.730.1966
nb-customerservice@bio-techne.com

Bio-Techne Canada

21 Canmotor Ave
Toronto, ON M8Z 4E6
Canada
Phone: 905.827.6400
Toll Free: 855.668.8722
Fax: 905.827.6402
canada.inquires@bio-techne.com

Bio-Techne Ltd

19 Barton Lane
Abingdon Science Park
Abingdon, OX14 3NB, United Kingdom
Phone: (44) (0) 1235 529449
Free Phone: 0800 37 34 15
Fax: (44) (0) 1235 533420
info.EMEA@bio-techne.com

General Contact Information

www.novusbio.com
Technical Support: nb-technical@bio-techne.com
Orders: nb-customerservice@bio-techne.com
General: novus@novusbio.com

Products Related to NB600-973-0.5mg

NB820-59232	Human Liver Whole Tissue Lysate (Adult Whole Normal)
HAF008	Goat anti-Rabbit IgG Secondary Antibody [HRP]
NB7160	Goat anti-Rabbit IgG (H+L) Secondary Antibody [HRP]
NBP2-24891	Rabbit IgG Isotype Control

Limitations

This product is for research use only and is not approved for use in humans or in clinical diagnosis. Primary Antibodies are guaranteed for 1 year from date of receipt.

For more information on our 100% guarantee, please visit www.novusbio.com/guarantee

Earn gift cards/discounts by submitting a review: www.novusbio.com/reviews/submit/NB600-973

Earn gift cards/discounts by submitting a publication using this product:
www.novusbio.com/publications

