

# Product Datasheet

## Human Serum Albumin Antibody [Biotin] NB600-929

Unit Size: 0.1 mg

Store at 4C short term. Aliquot and store at -20C long term. Avoid freeze-thaw cycles.

[www.novusbio.com](http://www.novusbio.com)



[technical@novusbio.com](mailto:technical@novusbio.com)

Protocols, Publications, Related Products, Reviews, Research Tools and Images at:  
[www.novusbio.com/NB600-929](http://www.novusbio.com/NB600-929)

Updated 10/23/2024 v.20.1

Earn rewards for product  
reviews and publications.

Submit a publication at [www.novusbio.com/publications](http://www.novusbio.com/publications)

Submit a review at [www.novusbio.com/reviews/destination/NB600-929](http://www.novusbio.com/reviews/destination/NB600-929)



**NB600-929****Human Serum Albumin Antibody [Biotin]**

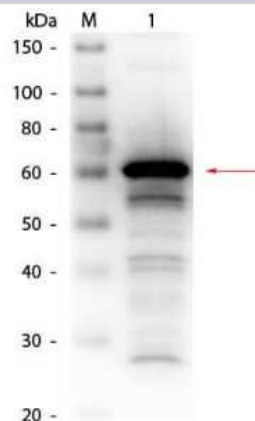
<b>Product Information</b>	
<b>Unit Size</b>	0.1 mg
<b>Concentration</b>	Please see the vial label for concentration. If unlisted please contact technical services.
<b>Storage</b>	Store at 4C short term. Aliquot and store at -20C long term. Avoid freeze-thaw cycles.
<b>Clonality</b>	Polyclonal
<b>Preservative</b>	0.01% Sodium Azide
<b>Isotype</b>	IgG
<b>Conjugate</b>	Biotin
<b>Purity</b>	Immunogen affinity purified
<b>Buffer</b>	0.02 M Potassium Phosphate, 0.15 M Sodium Chloride, pH 7.2, 10 mg/ml Polyethylene Glycol (PEG-8000)

<b>Product Description</b>	
<b>Description</b>	<p>For extended storage aliquot contents and freeze at -20C or below. Avoid cycles of freezing and thawing. Centrifuge product if not completely clear after standing at room temperature. This product is stable for several weeks at 4C as an undiluted liquid. Dilute only prior to immediate use.</p> <p>This antibody (Biotin Conjugated) was prepared from monospecific antiserum by immunoaffinity chromatography using purified human serum albumin. Assay by immunoelectrophoresis resulted in a single precipitin arc against anti-biotin and anti-Rabbit Serum. Analysis by SDS-PAGE was used to determine that this preparation is substantially free of aggregates and shows a banding pattern consistent with purified Rabbit IgG.</p>
<b>Host</b>	Rabbit
<b>Gene ID</b>	213
<b>Gene Symbol</b>	ALB
<b>Species</b>	Human
<b>Reactivity Notes</b>	Cross reactivity against Human Serum Albumin from other tissues and species may occur but has not been specifically determined
<b>Specificity/Sensitivity</b>	Cross reactivity against Albumin from other tissues and species may occur but has not been specifically determined.
<b>Immunogen</b>	Albumin (Human Serum) (Uniprot: P02768)

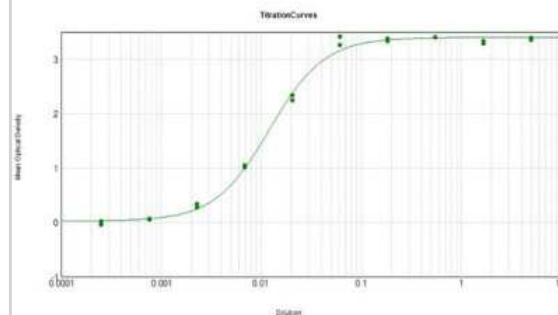
<b>Product Application Details</b>	
<b>Applications</b>	Western Blot, ELISA, Immunohistochemistry, Immunohistochemistry-Paraffin
<b>Recommended Dilutions</b>	Western Blot 1:1000-1:5000, ELISA 1:60000, Immunohistochemistry 1:500-1:3000, Immunohistochemistry-Paraffin 1:10-1:500
<b>Application Notes</b>	This product has been tested in ELISA, western blot, and suitable in immunohistochemical assays. Optimal concentrations should be determined by researcher.

## Images

Western Blot: Human Serum Albumin Antibody [Biotin] [NB600-929] - Western Blot of Human Serum Albumin antibody [Biotin]. Lane 1: Human Serum Albumin. Load: 50 ng per lane. Primary antibody: Human Serum Albumin antibody [Biotin] at 1:1,000 overnight at 4C. Secondary antibody: HRP Streptavidin secondary antibody at 1:40,000 for 30 min at RT. Block for 30 min at RT. Predicted/Observed size: 66 kDa, 60 kDa for Human Serum Albumin.



ELISA: Human Serum Albumin Antibody [Biotin] [NB600-929] - ELISA Results of Rabbit Human Serum Albumin antibody [Biotin] tested against purified human serum albumin. Each well was coated in duplicate with 1.0 ug of HSA. The starting dilution of antibody was 5ug/ml and the X-axis represents the Log10 of a 3-fold dilution. This titration is a 4-parameter curve fit where the IC50 is defined as the titer of the antibody. Assay performed using HRP conjugate stabilizer, Streptavidin-HRP conjugated and TMB substrate.





### **Novus Biologicals USA**

10730 E. Briarwood Avenue  
Centennial, CO 80112  
USA  
Phone: 303.730.1950  
Toll Free: 1.888.506.6887  
Fax: 303.730.1966  
nb-customerservice@bio-techne.com

### **Bio-Techne Canada**

21 Canmotor Ave  
Toronto, ON M8Z 4E6  
Canada  
Phone: 905.827.6400  
Toll Free: 855.668.8722  
Fax: 905.827.6402  
canada.inquires@bio-techne.com

### **Bio-Techne Ltd**

19 Barton Lane  
Abingdon Science Park  
Abingdon, OX14 3NB, United Kingdom  
Phone: (44) (0) 1235 529449  
Free Phone: 0800 37 34 15  
Fax: (44) (0) 1235 533420  
info.EMEA@bio-techne.com

### **General Contact Information**

www.novusbio.com  
Technical Support: nb-technical@bio-techne.com  
Orders: nb-customerservice@bio-techne.com  
General: novus@novusbio.com

### **Products Related to NB600-929**

---

NBP2-29370	Streptavidin Native Protein
NBP2-24891B	Rabbit IgG Isotype Control [Biotin]
NBP1-96791	Human Serum Albumin Native Protein
210-TA-005	TNF-alpha [Unconjugated]

---

### **Limitations**

This product is for research use only and is not approved for use in humans or in clinical diagnosis. Primary Antibodies are guaranteed for 1 year from date of receipt.

For more information on our 100% guarantee, please visit [www.novusbio.com/guarantee](http://www.novusbio.com/guarantee)

Earn gift cards/discounts by submitting a review: [www.novusbio.com/reviews/submit/NB600-929](http://www.novusbio.com/reviews/submit/NB600-929)

Earn gift cards/discounts by submitting a publication using this product:  
[www.novusbio.com/publications](http://www.novusbio.com/publications)

