

Product Datasheet

E2F-1 [p Ser364] Antibody - BSA Free NB600-900

Unit Size: 0.1 mg

Store at -20C short term. Aliquot and store at -80C long term. Avoid freeze-thaw cycles.

www.novusbio.com



technical@novusbio.com

Protocols, Publications, Related Products, Reviews, Research Tools and Images at:
www.novusbio.com/NB600-900

Updated 2/21/2025 v.20.1

Earn rewards for product
reviews and publications.

Submit a publication at www.novusbio.com/publications

Submit a review at www.novusbio.com/reviews/destination/NB600-900



NB600-900

E2F-1 [p Ser364] Antibody - BSA Free

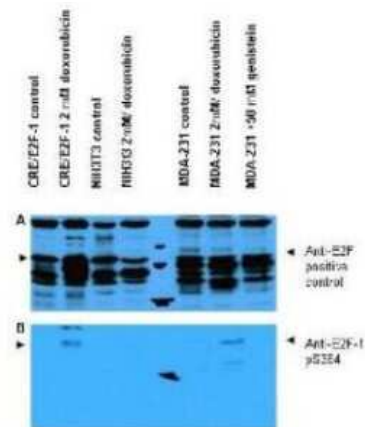
Product Information	
Unit Size	0.1 mg
Concentration	Please see the vial label for concentration. If unlisted please contact technical services.
Storage	Store at -20C short term. Aliquot and store at -80C long term. Avoid freeze-thaw cycles.
Clonality	Polyclonal
Preservative	0.01% Sodium Azide
Isotype	IgG
Purity	Immunogen affinity purified
Buffer	0.02 M Potassium Phosphate, 0.15 M Sodium Chloride, pH 7.2
Product Description	
Description	<p>This affinity purified antibody is directed against the phosphorylated form of human E2F-1 at the [p Ser364] residue. The product was affinity purified from monospecific antiserum by immunoaffinity purification. Antiserum was first purified against the phosphorylated form of the immunizing peptide. The resultant affinity purified antibody was then cross adsorbed against the non-phosphorylated form of the immunizing peptide</p> <p>Store vial at -20C prior to opening. Aliquot contents and freeze at -20C or below for extended storage. Avoid cycles of freezing and thawing. Centrifuge product if not completely clear after standing at room temperature. This product is stable for several weeks at 4C as an undiluted liquid. Dilute only prior to immediate use.</p>
Host	Rabbit
Gene ID	1869
Gene Symbol	E2F1
Species	Human, Mouse
Reactivity Notes	A BLAST analysis was used to suggest reactivity with this protein from human and chimpanzee based on 100% homology for the immunogen sequence. Cross reactivity with E2F-1 homologues from other sources has not been determined.
Specificity/Sensitivity	This affinity purified antibody is directed against the phosphorylated form of human E2F-1 at the pS364 residue. The resultant affinity purified antibody was then cross adsorbed against the non-phosphorylated form of the immunizing peptide. Reactivity occurs against human E2F-1 pS364 protein and the antibody is specific for the phosphorylated form of the protein. Reactivity with non-phosphorylated human E2F-1 is minimal by ELISA. The antibody does not cross-react with E2F-1 phosphorylated at other sites. A BLAST analysis was used to suggest reactivity with this protein from human and chimpanzee based on 100% homology for the immunogen sequence. Cross reactivity with E2F-1 homologues from other sources has not been determined.
Immunogen	This affinity purified E2F-1 [p Ser364] Antibody was prepared from whole rabbit serum produced by repeated immunizations with a synthetic peptide corresponding to an internal region near amino acids 350-375 of Human E2F-1. (Uniprot: Q01094)
Product Application Details	
Applications	Western Blot, ELISA, Immunohistochemistry



Recommended Dilutions	Western Blot 1:250-1:2000, ELISA 1:20000-1:100000, Immunohistochemistry 2 mg/ml-20 ug/ml
Application Notes	This affinity purified antibody has been tested for use in ELISA, immunohistochemistry and by western blot. Specific conditions for reactivity should be optimized by the end user. Expect a band approximately 47 kDa in size corresponding to phosphorylated E2F-1 by western blotting in the appropriate cell lysate or extract. Less than 0.5% reactivity is observed against the non-phosphorylated form of the immunizing peptide. This antibody is phospho specific for pS364 of E2F-1.

Images

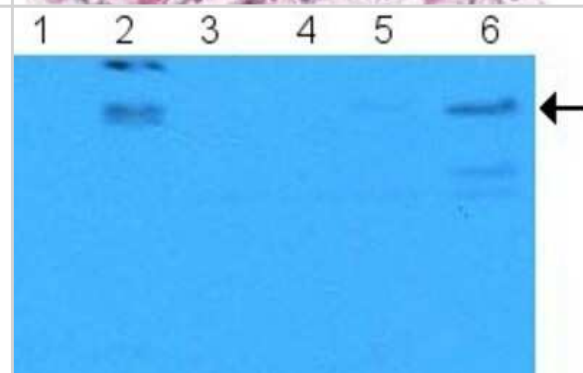
Western Blot: E2F-1 [p Ser364] Antibody [NB600-900] - Panel A: Control antibody reactive to all forms of E2F (arrowheads). **Panel B:** Reactivity with phosphorylated E2F-1 (arrows) using E2F-1 [p Ser364] antibody. Lysate cells: CRE/E2F-1 CRE (human E2F-1 transfected mouse NIH3T3); NIH-3T3 (-ve control), & MDA-MB-231. Each lysate prepared from untreated cells & cells with 2 uM Doxorubicin. MDA-MB-231 also treated with genistein. Same membrane probed with E2F-1 [p Ser364] antibody @ 1:250 dilution, then stripped & re-probed with pan E2F antibody (+ve control). +ve control antibody shows an E2F-1 band in all human cell lines, but not mouse cells. Doxorubicin increases expression of E2F-1 (Panel A). Images overlapped to confirm that specific anti-E2F-1 pS364 staining shown in treated human cells in Panel B specifically aligns with E2F-1 staining shown in Panel A. Blots can be processed with HRP conjugated Gt-a-Rabbit IgG MX10 for 45 min at RT for ECL detection.



Immunohistochemistry: E2F-1 [p Ser364] Antibody [NB600-900] - Affinity Purified E2F-1 [p Ser364] antibody was used at a 10 ug/ml to detect nuclear and occasionally cytoplasmic signal in a variety of tissues including multi-human, multi-brain and multi-cancer slides. Within the multi-tumor block, the antibody showed variable levels of nuclear staining between individual tumors, with some tumors showing strong staining. This image shows E2F-1 pS364 staining of human breast carcinoma. Tissue was formalin-fixed and paraffin embedded.



Western Blot: E2F-1 [p Ser364] Antibody [NB600-900] - NB600-900 Western blot - E2F1 (phospho S364) antibody





Novus Biologicals USA

10730 E. Briarwood Avenue
Centennial, CO 80112
USA
Phone: 303.730.1950
Toll Free: 1.888.506.6887
Fax: 303.730.1966
nb-customerservice@bio-techne.com

Bio-Techne Canada

21 Canmotor Ave
Toronto, ON M8Z 4E6
Canada
Phone: 905.827.6400
Toll Free: 855.668.8722
Fax: 905.827.6402
canada.inquires@bio-techne.com

Bio-Techne Ltd

19 Barton Lane
Abingdon Science Park
Abingdon, OX14 3NB, United Kingdom
Phone: (44) (0) 1235 529449
Free Phone: 0800 37 34 15
Fax: (44) (0) 1235 533420
info.EMEA@bio-techne.com

General Contact Information

www.novusbio.com
Technical Support: nb-technical@bio-techne.com
Orders: nb-customerservice@bio-techne.com
General: novus@novusbio.com

Products Related to NB600-900

HAF008	Goat anti-Rabbit IgG Secondary Antibody [HRP]
NB7160	Goat anti-Rabbit IgG (H+L) Secondary Antibody [HRP]
NBP2-24891	Rabbit IgG Isotype Control
NBP2-56716PEP	E2F-1 Recombinant Protein Antigen

Limitations

This product is for research use only and is not approved for use in humans or in clinical diagnosis. Primary Antibodies are guaranteed for 1 year from date of receipt.

For more information on our 100% guarantee, please visit www.novusbio.com/guarantee

Earn gift cards/discounts by submitting a review: www.novusbio.com/reviews/submit/NB600-900

Earn gift cards/discounts by submitting a publication using this product:
www.novusbio.com/publications

