

Product Datasheet

Notch-2 Antibody - BSA Free NB600-879-0.1ml

Unit Size: 0.1 ml

Store at -20C short term. Aliquot and store at -80C long term. Avoid freeze-thaw cycles.

www.novusbio.com



technical@novusbio.com

Publications: 4

Protocols, Publications, Related Products, Reviews, Research Tools and Images at:
www.novusbio.com/NB600-879

Updated 2/21/2025 v.20.1

Earn rewards for product
reviews and publications.

Submit a publication at www.novusbio.com/publications

Submit a review at www.novusbio.com/reviews/destination/NB600-879



NB600-879-0.1ml

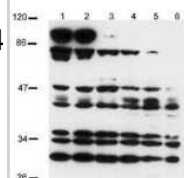
Notch-2 Antibody - BSA Free

Product Information	
Unit Size	0.1 ml
Concentration	This product is unpurified. The exact concentration of antibody is not quantifiable.
Storage	Store at -20C short term. Aliquot and store at -80C long term. Avoid freeze-thaw cycles.
Clonality	Polyclonal
Preservative	0.1% Sodium Azide
Isotype	Serum
Purity	Unpurified
Buffer	0.02 M Potassium Phosphate, 0.15 M Sodium Chloride, pH 7.2
Product Description	
Description	<p>This antiserum is directed against human Notch-2</p> <p>Store vial at -20C prior to opening. Aliquot contents and freeze at -20C or below for extended storage. Avoid cycles of freezing and thawing. Centrifuge product if not completely clear after standing at room temperature. This product is stable for several weeks at 4C as an undiluted liquid. Dilute only prior to immediate use.</p>
Host	Rabbit
Gene ID	4853
Gene Symbol	NOTCH2
Species	Human
Reactivity Notes	This antiserum is directed against human Notch-2. The peptide sequence shows 100% alignment with human, dog and chimpanzee sequence. Only one (1) amino acid difference is found in mouse and this change is non-conservative. Based on the sequence we expect this antibody to react as well with rat and mouse Notch-2. No specific information is available for other reactivities.
Specificity/Sensitivity	This antiserum is directed against human Notch-2. The peptide sequence shows 100% alignment with human, dog and chimpanzee sequence. Only one (1) amino acid difference is found in mouse and this change is non-conservative. Based on the sequence we expect this antibody to react as well with rat and mouse Notch-2. No specific information is available for other reactivities.
Immunogen	This whole rabbit serum was prepared by repeated immunizations with a synthetic peptide corresponding to an internal region near amino acid residues 2390-2415 of human Notch-2 (the total protein is 2471 aa). A residue of cysteine was added to the amino terminal end to facilitate coupling. (Uniprot: Q04721)
Product Application Details	
Applications	Western Blot, ELISA, Immunohistochemistry, Immunohistochemistry-Paraffin
Recommended Dilutions	Western Blot 1:400-1:2000, ELISA 1:30000-1:90000, Immunohistochemistry 1:200-1:800, Immunohistochemistry-Paraffin 1:500
Application Notes	This antibody has been tested for use in ELISA and western blot. For western blot experiments, one can expect a band of ~110 kDa in size corresponding to active Notch 2 in the appropriate cell lysate. A 1:500 dilution was effective for staining FFPE human kidney tissue by Immunohistochemistry (IHC). Specific conditions for reactivity should be optimized by the end user.

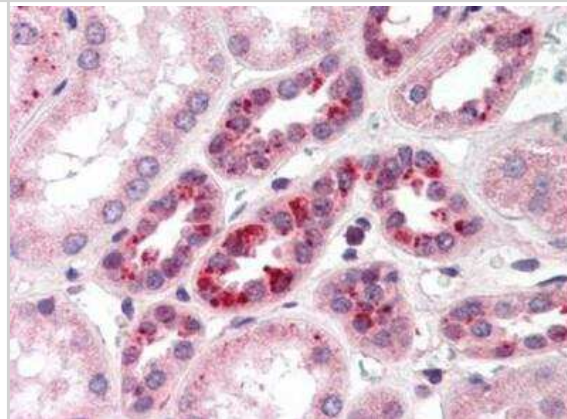


Images

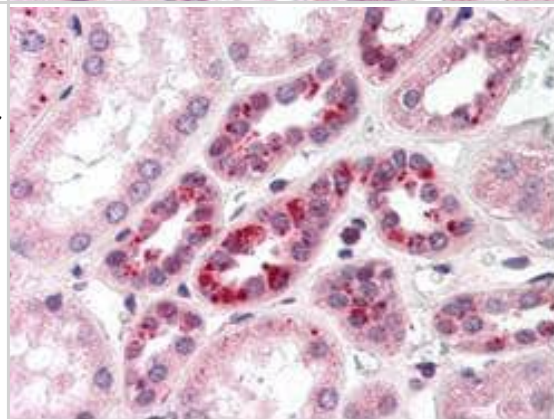
Western Blot: Notch-2 Antibody [NB600-879] - Analysis of a band at 110 kDa corresponding to active Notch 2 protein (arrowhead). Analysis was performed for Notch 2 expression using 100ug of total protein lysate obtained from human mesothelial SV40 cells transfected with a plasmid encoding a constitutively active Notch 2 (intra cellular Notch 2). Lanes 1-3 contain lysate 24 h (1), 48 h (2), and 72 h (3) post transfection. Lanes 4-6 are the corresponding control cells (untransfected) taken at similar time points. The band at about 110kD represents active Notch 2. This band is not seen in the control cell. The intracellular domain of Notch 2 has a predicted band size of 110kD, corresponding to this band. Protein cell lysates were run on a 10% SDS-page gel, blotted onto Hybond C membrane, blocked overnight in PBS-Tween 20 supplemented with 5% Non-fat Milk and probed with anti-Notch 2 at a 1:400 dilution. ECL was used as visualization method.



Immunohistochemistry-Paraffin: Notch-2 Antibody [NB600-879] - Diluted 1:500 to detect Notch-2 in human kidney tissue. Tissue was formalin fixed and paraffin embedded. No pre-treatment of sample was required. The image shows the localization of antibody as the precipitated red signal, with a hematoxylin purple nuclear counter stain.



Anti-Notch 2 antibody was diluted 1:500 to detect NOTCH 2 in human kidney tissue. Tissue was formalin fixed and paraffin embedded. No pre-treatment of sample was required. The image shows the localization of antibody as the precipitated red signal, with a hematoxylin purple nuclear counter stain.



Publications

Blancas S, Medina-Berlanga R, Ortiz-Garcia L et al. Protein Expression Analysis in Uterine Cervical Cancer for Potential Targets in Treatment. *Pathol. Oncol. Res.* 2018-03-12 [PMID: 29532409] (IHC-P, Human)

Yu Hp, Qi St, Feng Wf et al. Interference of notch 2 inhibits the progression of gliomas and induces cell apoptosis by induction of the cell cycle at the G0/G1 phase. *Mol Med Rep.* 2014-10-22 [PMID: 25338527] (IF/IHC)

Wang J, Zhang Y, Wei J et al. Effect of Notch activation on the regenerative response to acute renal failure. *Am J Physiol Renal Physiol* 2010-01-01 [PMID: 19828677]

Rutenberg, J B, Fischer, A, Jia, H, Gessler, M, Zhong, T P, Mercola, M. Developmental patterning of the cardiac atrioventricular canal by Notch Hairy-related transcription factors, . 133, 4381-4390. 2006-01-01 [PMID: 17021042]



Novus Biologicals USA

10730 E. Briarwood Avenue
Centennial, CO 80112
USA
Phone: 303.730.1950
Toll Free: 1.888.506.6887
Fax: 303.730.1966
nb-customerservice@bio-techne.com

Bio-Techne Canada

21 Canmotor Ave
Toronto, ON M8Z 4E6
Canada
Phone: 905.827.6400
Toll Free: 855.668.8722
Fax: 905.827.6402
canada.inquires@bio-techne.com

Bio-Techne Ltd

19 Barton Lane
Abingdon Science Park
Abingdon, OX14 3NB, United Kingdom
Phone: (44) (0) 1235 529449
Free Phone: 0800 37 34 15
Fax: (44) (0) 1235 533420
info.EMEA@bio-techne.com

General Contact Information

www.novusbio.com
Technical Support: nb-technical@bio-
techne.com
Orders: nb-customerservice@bio-techne.com
General: novus@novusbio.com

Products Related to NB600-879-0.1ml

HAF008	Goat anti-Rabbit IgG Secondary Antibody [HRP]
NB7160	Goat anti-Rabbit IgG (H+L) Secondary Antibody [HRP]
NBP2-48913PEP	Notch-2 Recombinant Protein Antigen
236-EG-200	EGF [Unconjugated]

Limitations

This product is for research use only and is not approved for use in humans or in clinical diagnosis. Primary Antibodies are guaranteed for 1 year from date of receipt.

For more information on our 100% guarantee, please visit www.novusbio.com/guarantee

Earn gift cards/discounts by submitting a review: www.novusbio.com/reviews/submit/NB600-879

Earn gift cards/discounts by submitting a publication using this product:
www.novusbio.com/publications

