

# Product Datasheet

## GLI-2 Antibody - BSA Free NB600-874

Unit Size: 0.1 mg

Store at -20C short term. Aliquot and store at -80C long term. Avoid freeze-thaw cycles.

[www.novusbio.com](http://www.novusbio.com)



[technical@novusbio.com](mailto:technical@novusbio.com)

**Reviews: 1 Publications: 11**

Protocols, Publications, Related Products, Reviews, Research Tools and Images at:  
[www.novusbio.com/NB600-874](http://www.novusbio.com/NB600-874)

Updated 2/21/2025 v.20.1

**Earn rewards for product  
reviews and publications.**

Submit a publication at [www.novusbio.com/publications](http://www.novusbio.com/publications)

Submit a review at [www.novusbio.com/reviews/destination/NB600-874](http://www.novusbio.com/reviews/destination/NB600-874)



**NB600-874**

GLI-2 Antibody - BSA Free

<b>Product Information</b>	
<b>Unit Size</b>	0.1 mg
<b>Concentration</b>	Please see the vial label for concentration. If unlisted please contact technical services.
<b>Storage</b>	Store at -20C short term. Aliquot and store at -80C long term. Avoid freeze-thaw cycles.
<b>Clonality</b>	Polyclonal
<b>Preservative</b>	0.01% Sodium Azide
<b>Isotype</b>	IgG
<b>Purity</b>	Immunogen affinity purified
<b>Buffer</b>	0.02 M Potassium Phosphate, 0.15 M Sodium Chloride, pH 7.2
<b>Product Description</b>	
<b>Description</b>	<p>This affinity-purified antibody is directed against human Gli-2 protein. The product was affinity purified from monospecific antiserum by immunoaffinity purification. A BLAST analysis was used to suggest cross reactivity with GLI-2 from human and chimpanzee based on the immunizing sequence.</p> <p>Store vial at -20C prior to opening. Aliquot contents and freeze at -20C or below for extended storage. Avoid cycles of freezing and thawing. Centrifuge product if not completely clear after standing at room temperature. This product is stable for several weeks at 4C as an undiluted liquid. Dilute only prior to immediate use.</p>
<b>Host</b>	Rabbit
<b>Gene ID</b>	2736
<b>Gene Symbol</b>	GLI2
<b>Species</b>	Human, Mouse, Rat
<b>Reactivity Notes</b>	A BLAST analysis was used to suggest cross reactivity with Gli-2 from chimpanzee based on the immunizing sequence Mouse reactivity reported in scientific literature (PMID: 27760825).
<b>Immunogen</b>	This affinity purified GLI-2 Antibody was prepared from whole rabbit serum produced by repeated immunizations with a synthetic peptide corresponding to an internal region near amino acids 30-65 of human GLI-2 (isoform a). (Uniprot: P10070)
<b>Product Application Details</b>	
<b>Applications</b>	Western Blot, ELISA, Flow (Intracellular), Immunohistochemistry, Immunohistochemistry-Paraffin, Chromatin Immunoprecipitation (ChIP)
<b>Recommended Dilutions</b>	Western Blot 1:500-1:2000, ELISA 1:10000-1:30000, Immunohistochemistry 1:500-1:2000, Immunohistochemistry-Paraffin 1:10-1:500, Flow (Intracellular), Chromatin Immunoprecipitation (ChIP) 1:10-1:500



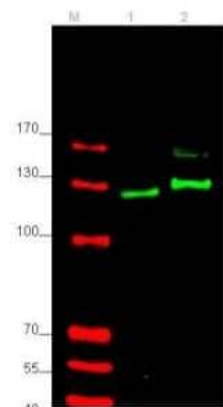
**Application Notes**

This antibody has been tested for use in ELISA, immunohistochemistry and western blot. Specific conditions for reactivity should be optimized by the end user. See figure legend for expectations by western blot. Multiple splice variants have been reported for this protein a, b, g and d (133.3, 131.6, 88.1 and 86.4 kDa respectively). Detection of Gli-2 by western blot may be enhanced if nuclear extracts are used instead of whole cell lysates as the expression/abundance of Gli-2 is likely to be low. Furthermore, Gli-2 expression is likely to be developmentally regulated and induced, making it difficult to detect in whole tissue homogenates.

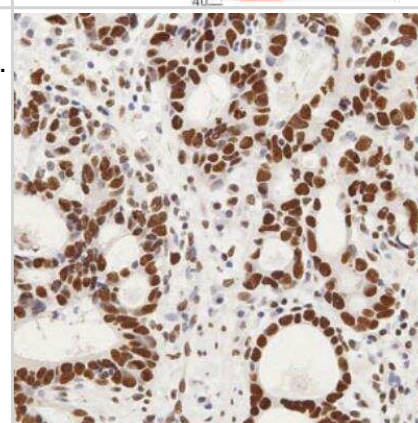
Use in chromatin immunoprecipitation reported in scientific literature (PMID: 27760825).

**Images**

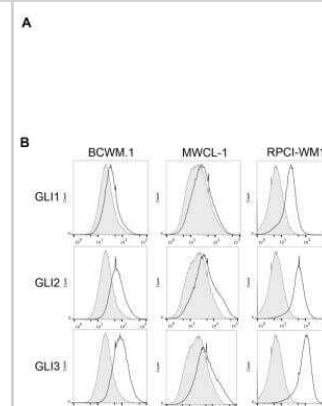
Western Blot: GLI-2 Antibody [NB600-874] - Analysis of Gli-2 protein in rat testes (lane 1) and human HEK293 (lane 2) whole cell lysates (arrowhead). See Ruppert et al for testing conditions. Each lane contains approximately 35 ug of lysate. Primary antibody was used at a 1:400 dilution in 5% BLOTTO in PBS overnight at 4C. The membrane was washed and reacted with a 1:10,000 dilution of IRDye 800 conjugated Gt-a-Rabbit IgG [H&L] MX10 for 45 min at room temperature (800 nm channel, green).



Immunohistochemistry-Paraffin: GLI-2 Antibody [NB600-874] - Mouse adenocarcinoma section shows high and diffuse nuclear Gli2 expression. IHC-P image submitted by a verified customer review.



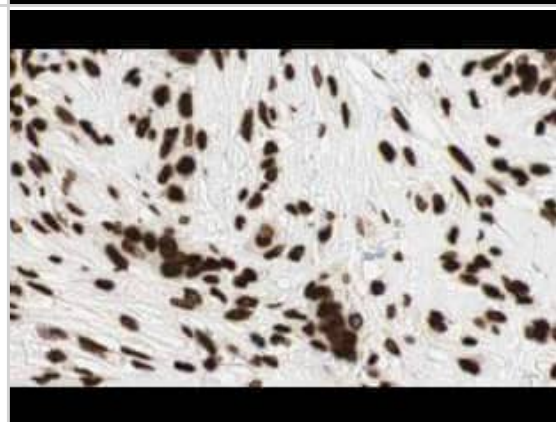
Flow (Intracellular): GLI-2 Antibody [NB600-874] - intracellular staining for GLI-2 in untreated human B cell lines (BCWM.1, MWCL-1 and RPCI-WM1) using anti-GLI-2 antibody. Rabbit IgG Isotype Control (Cat# NBP2-36463) was used as a negative control. Image courtesy of Sherine ElSawa, Northern Illinois University.



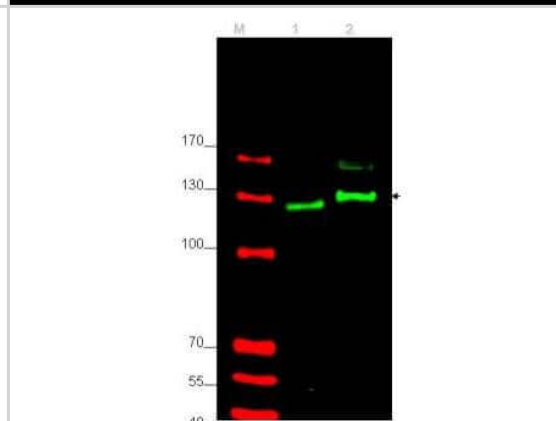
Immunohistochemistry: GLI-2 Antibody [NB600-874] - Staining of tumor cells in human breast tissue. Tissue was formalin-fixed and paraffin embedded. Brown color indicates presence of protein, blue color shows cell nuclei.



Affinity Purified anti-Gli2 antibody shows strong cytoplasmic and membranous staining of tumor cells in human breast tissue. Tissue was formalin-fixed and paraffin embedded. Brown color indicates presence of protein, blue color shows cell nuclei. Personal Communication, Kenneth Wester, [www.proteinatlas.org](http://www.proteinatlas.org), Uppsala, Sweden.



Western blot using affinity purified antibody shows detection of Gli-2 protein. Lane 1: rat testes



## Publications

Li AL, Sugiura K, Nishiwaki N, Suzuki K et al. FRA1 controls acinar cell plasticity during murine Kras(G12D)-induced pancreatic acinar to ductal metaplasia *Dev Cell* 2024-08-23 [PMID: 39178842]

Ashley N. Sigafos, Ezequiel J. Tolosa, Ryan M. Carr, Maite G. Fernandez-Barrena, Luciana L. Almada, David R. Pease, Tara L. Hogenson, Glancis L. Raja Arul, Fatemeh Mousavi, Sandhya Sen, Renzo E. Vera, David L. Marks, Luis F. Flores, Kayla C. LaRue-Nolan, Chen Wu, William R. Bamlet, Anne M. Vrabel, Hugues Sicotte, Erin L. Schenk, Thomas C. Smyrk, Lizhi Zhang, Kari G. Rabe, Ann L. Oberg, Peter G. Zaphiropoulos, Eric Chevet, Rondell P. Graham, Catherine E. Hagen, Marina P. di Magliano, Sherine F. Elswa, Christopher L. Pin, Junhao Mao, Robert R. McWilliams, Martin E. Fernandez-Zapico KRAS Promotes GLI2-Dependent Transcription during Pancreatic Carcinogenesis *Cancer Research Communications* 2024-07-01 [PMID: 38896052]

Juuri E, Tikka P, Domanskyi A et al. Ptch2 is a Potential Regulator of Mesenchymal Stem Cells *Frontiers in Physiology* 2022-04-28 [PMID: 35574464] (In vivo assay)

Shamsoon K, Hiraki D, Yoshida K et al. The Role of Hedgehog Signaling in the Melanoma Tumor Bone Microenvironment *International Journal of Molecular Sciences* 2023-05-16 [PMID: 37240209] (Immunohistochemistry)

Feng R Hierarchical regulation of albumin transcription in liver cells under physiologic and pathophysiologic conditions *Thesis* 2022-01-01 (Chemotaxis, Mouse)

Xia L, Bouamar H, Gu X et al. Gli2 mediates the development of castration resistant prostate cancer *Int. J. Oncol.* 2020-04-13 [PMID: 32319599]

Mazzone A, Gibbons SJ, Eisenman ST et al. Direct repression of anoctamin 1 ( ANO1) gene transcription by Gli proteins *FASEB J.* 2019-02-25 [PMID: 30802137] (Chemotaxis, Human)

Zhu H, Xia L, Shen Q et al. Differential effects of GLI2 and GLI3 in regulating cervical cancer malignancy in vitro and in vivo. *Lab. Invest.* 2018-07-02 [PMID: 29967343] (WB, Human)

Wu M, Ingram L, Tolosa EJ et al. Gli transcription factors mediate the oncogenic transformation of prostate basal cells induced by a Kras-androgen receptor axis. *J. Biol. Chem.* 2016-10-19 [PMID: 27760825] (Chemotaxis, Mouse)

Jackson DA, Smith TD, Amarsaikhan N et al. Modulation of the IL-6 Receptor alpha Underlies GLI2-Mediated Regulation of Ig Secretion in Waldenstrom Macroglobulinemia Cells. *J Immunol* 2015-09-15 [PMID: 26238488]

Won Ky, Kim Gy, Lim Sj et al. Autophagy is related to the hedgehog signaling pathway in human gastric adenocarcinoma: Prognostic significance of Beclin-1 and Gli2 expression in human gastric adenocarcinoma *Pathology - Research and Practice* et al. 2014-11-20 [PMID: 25512258] (IHC-P, Human)

### Details:

Gli-2 antibody used for IHC-P on human gastric adenocarcinoma tissue microarrays.



### **Novus Biologicals USA**

10730 E. Briarwood Avenue  
Centennial, CO 80112  
USA  
Phone: 303.730.1950  
Toll Free: 1.888.506.6887  
Fax: 303.730.1966  
nb-customerservice@bio-techne.com

### **Bio-Techne Canada**

21 Canmotor Ave  
Toronto, ON M8Z 4E6  
Canada  
Phone: 905.827.6400  
Toll Free: 855.668.8722  
Fax: 905.827.6402  
canada.inquires@bio-techne.com

### **Bio-Techne Ltd**

19 Barton Lane  
Abingdon Science Park  
Abingdon, OX14 3NB, United Kingdom  
Phone: (44) (0) 1235 529449  
Free Phone: 0800 37 34 15  
Fax: (44) (0) 1235 533420  
info.EMEA@bio-techne.com

### **General Contact Information**

www.novusbio.com  
Technical Support: nb-technical@bio-techne.com  
Orders: nb-customerservice@bio-techne.com  
General: novus@novusbio.com

### **Products Related to NB600-874**

---

HAF008	Goat anti-Rabbit IgG Secondary Antibody [HRP]
NB7160	Goat anti-Rabbit IgG (H+L) Secondary Antibody [HRP]
NBP2-24891	Rabbit IgG Isotype Control
NBP2-23602PEP	GLI-2 Antibody Blocking Peptide

---

### **Limitations**

This product is for research use only and is not approved for use in humans or in clinical diagnosis. Primary Antibodies are guaranteed for 1 year from date of receipt.

For more information on our 100% guarantee, please visit [www.novusbio.com/guarantee](http://www.novusbio.com/guarantee)

Earn gift cards/discounts by submitting a review: [www.novusbio.com/reviews/submit/NB600-874](http://www.novusbio.com/reviews/submit/NB600-874)

Earn gift cards/discounts by submitting a publication using this product:  
[www.novusbio.com/publications](http://www.novusbio.com/publications)

