

Product Datasheet

Bovine Serum Albumin Antibody (5F9) - BSA Free NB600-868

Unit Size: 0.1 mg

Store at -20C short term. Aliquot and store at -80C long term. Avoid freeze-thaw cycles.

www.novusbio.com



technical@novusbio.com

Protocols, Publications, Related Products, Reviews, Research Tools and Images at:
www.novusbio.com/NB600-868

Updated 2/21/2025 v.20.1

Earn rewards for product
reviews and publications.

Submit a publication at www.novusbio.com/publications

Submit a review at www.novusbio.com/reviews/destination/NB600-868



NB600-868

Bovine Serum Albumin Antibody (5F9) - BSA Free

Product Information	
Unit Size	0.1 mg
Concentration	Please see the vial label for concentration. If unlisted please contact technical services.
Storage	Store at -20C short term. Aliquot and store at -80C long term. Avoid freeze-thaw cycles.
Clonality	Monoclonal
Clone	5F9
Preservative	0.01% Sodium Azide
Isotype	IgG1
Purity	Protein A purified
Buffer	0.02 M Potassium Phosphate, 0.15 M Sodium Chloride, pH 7.2

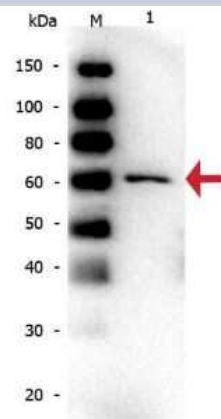
Product Description	
Description	<p>Bovine Serum Albumin monoclonal antibody was purified from concentrated tissue culture supernate by Protein A chromatography and reacts with bovine serum albumin</p> <p>Store vial at -20C prior to opening. Aliquot contents and freeze at -20C or below for extended storage. Avoid cycles of freezing and thawing. Centrifuge product if not completely clear after standing at room temperature. This product is stable for several weeks at 4C as an undiluted liquid. Dilute only prior to immediate use.</p>
Host	Mouse
Gene ID	280717
Gene Symbol	ALB
Species	Bovine
Reactivity Notes	No cross reactivity is detected against other serum proteins by immunoblot
Specificity/Sensitivity	The antibody recognizes a 66 kDa band corresponding to bovine serum albumin monomer. No cross reactivity is detected against other serum proteins by immunoblot. No reactivity is detected by ELISA against human serum albumin or ovalbumin.
Immunogen	Bovine Serum Albumin Antibody (5F9) was produced by repeated immunizations of balb/c mice with bovine serum albumin. (Uniprot: P02769)

Product Application Details	
Applications	Western Blot, Dot Blot, ELISA, Immunohistochemistry, Immunohistochemistry-Paraffin, Immunoprecipitation
Recommended Dilutions	Western Blot 1:2000-1:10000, ELISA 1:120000, Immunohistochemistry 1:1000-1:5000, Immunoprecipitation 1:100, Immunohistochemistry-Paraffin 1:10-1:500, Dot Blot
Application Notes	This product has been tested by ELISA, SDS-Page, and Western Blot. The antibody may be suitable for other applications, although no supporting data is available.



Images

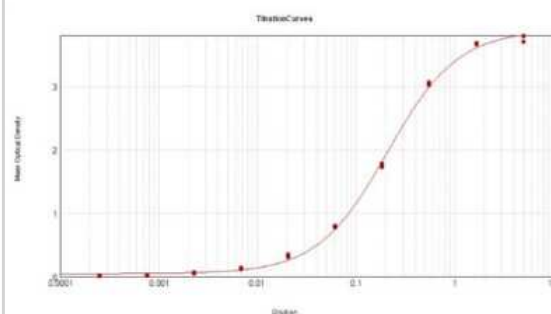
Western Blot: Bovine Serum Albumin Antibody (5F9) [NB600-868] - Western Blot of Bovine Serum Albumin antibody (5F9). Lane 1: Bovine Serum Albumin. Load: 50 ng per lane. Primary antibody: Bovine Serum Albumin antibody at 1:1,000 for overnight at 4C. Secondary antibody: Peroxidase mouse secondary antibody at 1:40,000 for 30 min at RT. Block: 0.75% Casein for 30 min at RT. Predicted/Observed size: 60 kDa, 60 kDa for Bovine Serum Albumin.



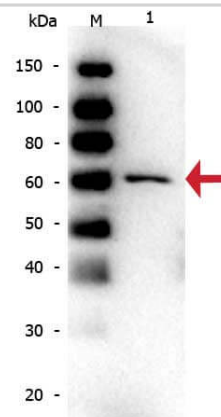
Western Blot: Bovine Serum Albumin Antibody (5F9) [NB600-868] - Bovine Serum Albumin Antibody (5F9) is shown to detect BSA in bovine serum diluted 1:100 (lane 1) and in purified BSA preparations at 0.5 mg/ml (lane 2).



ELISA: Bovine Serum Albumin Antibody (5F9) [NB600-868] - ELISA Results of Bovine Serum Albumin antibody (5F9). Each well was coated in duplicate with 10 ug of Bovine Serum Albumin. The working dilution is 1:85,300. The starting dilution of antibody was 5ug/ml and the X-axis represents the Log10 of a 3-fold dilution. This titration is a 4-parameter curve fit where the IC50 is defined as the titer of the antibody. Assay performed using 3% Fish Gel/PBS Blocking buffer, Rabbit Anti-Mouse HRP conjugated and TMB substrate.



Western Blot of Mouse anti-Bovine Serum Albumin Monoclonal Antibody. Lane 1: Bovine Serum Albumin. Load: 50 ng per lane. Primary antibody: Bovine Serum Albumin antibody at 1:1,000 for overnight at 4C. Secondary antibody: Peroxidase mouse secondary antibody at 1:40,000 for 30 min at RT. Block: 0.75% Casein for 30 min at RT. Predicted/Observed size: 60 kDa, 60 kDa for Bovine Serum Albumin.





Novus Biologicals USA

10730 E. Briarwood Avenue
Centennial, CO 80112
USA
Phone: 303.730.1950
Toll Free: 1.888.506.6887
Fax: 303.730.1966
nb-customerservice@bio-techne.com

Bio-Techne Canada

21 Canmotor Ave
Toronto, ON M8Z 4E6
Canada
Phone: 905.827.6400
Toll Free: 855.668.8722
Fax: 905.827.6402
canada.inquires@bio-techne.com

Bio-Techne Ltd

19 Barton Lane
Abingdon Science Park
Abingdon, OX14 3NB, United Kingdom
Phone: (44) (0) 1235 529449
Free Phone: 0800 37 34 15
Fax: (44) (0) 1235 533420
info.EMEA@bio-techne.com

General Contact Information

www.novusbio.com
Technical Support: nb-technical@bio-techne.com
Orders: nb-customerservice@bio-techne.com
General: novus@novusbio.com

Error: Subreport could not be shown.

Limitations

This product is for research use only and is not approved for use in humans or in clinical diagnosis. Primary Antibodies are guaranteed for 1 year from date of receipt.

For more information on our 100% guarantee, please visit www.novusbio.com/guarantee

Earn gift cards/discounts by submitting a review: www.novusbio.com/reviews/submit/NB600-868

Earn gift cards/discounts by submitting a publication using this product:
www.novusbio.com/publications

