

Product Datasheet

Lactate Dehydrogenase Antibody [HRP] NB600-863-0.1mg

Unit Size: 0.1 mg

Store lyophilized antibody at 4C in the dark. Aliquot reconstituted liquid and store at -20C. Avoid freeze-thaw cycles.

www.novusbio.com



technical@novusbio.com

Publications: 1

Protocols, Publications, Related Products, Reviews, Research Tools and Images at:
www.novusbio.com/NB600-863

Updated 10/23/2024 v.20.1

Earn rewards for product
reviews and publications.

Submit a publication at www.novusbio.com/publications

Submit a review at www.novusbio.com/reviews/destination/NB600-863



NB600-863-0.1mg**Lactate Dehydrogenase Antibody [HRP]**

Product Information	
Unit Size	0.1 mg
Concentration	LYOPH mg/ml
Storage	Store lyophilized antibody at 4C in the dark. Aliquot reconstituted liquid and store at -20C. Avoid freeze-thaw cycles.
Clonality	Polyclonal
Preservative	0.01% Gentamicin Sulfate
Reconstitution Instructions	Reconstitute with 100 ul deionized water (or equivalent)
Isotype	IgG
Conjugate	HRP
Purity	Multi-step
Buffer	Lyophilized from 0.02 M Potassium Phosphate, 0.15 M Sodium Chloride, pH 7.2, 10 mg/mL Bovine Serum Albumin (BSA) - Immunoglobulin and Protease free

Product Description	
Description	<p>Store vial at 4C prior to restoration. For extended storage aliquot contents and freeze at -20C or below. Avoid cycles of freezing and thawing. Centrifuge product if not completely clear after standing at room temperature. This product is stable for several weeks at 4C as an undiluted liquid. Dilute only prior to immediate use.</p> <p>This antibody is an IgG fraction antibody purified from monospecific antiserum by a multi-step process which includes delipidation, salt fractionation and ion exchange chromatography followed by extensive dialysis against the buffer stated above. Assay by immunoelectrophoresis resulted in a single precipitin arc against anti-Peroxidase, anti-Goat Serum as well as purified and partially purified Lactate Dehydrogenase [Rabbit Muscle]</p>
Host	Goat
Gene ID	3945
Gene Symbol	LDHB
Species	Human, Rabbit
Reactivity Notes	BLAST analysis was used to determine that cross reactivity is suggested for both muscle and heart isoforms (LDH-A and LDH-B) from most mammalian species
Specificity/Sensitivity	BLAST analysis was used to determine that cross reactivity is suggested for both muscle and heart isoforms (LDH-A and LDH-B) from most mammalian species.
Immunogen	This Lactate Dehydrogenase Antibody was prepared from whole goat serum produced by repeated immunizations with a full length Lactate Dehydrogenase protein isolated from rabbit muscle. (Uniprot: P13491)

Product Application Details	
Applications	Western Blot, Dot Blot, ELISA, Immunocytochemistry/ Immunofluorescence, Immunohistochemistry, Immunohistochemistry-Paraffin, Immunoprecipitation
Recommended Dilutions	Western Blot 1:1000-1:6000, ELISA 1:3000, Immunohistochemistry 1:500-1:2500, Immunocytochemistry/ Immunofluorescence 1:10-1:500, Immunoprecipitation 1:100, Immunohistochemistry-Paraffin 1:10-1:500, Dot Blot

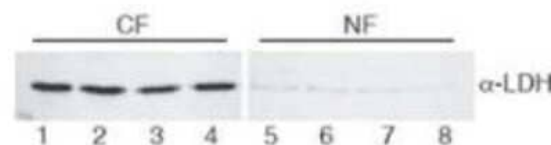
Application Notes

This product has been tested in ELISA, western blot, and immunofluorescence. This product is suitable for IP and IHC. Researchers should determine optimal titers for applications that are not stated below.

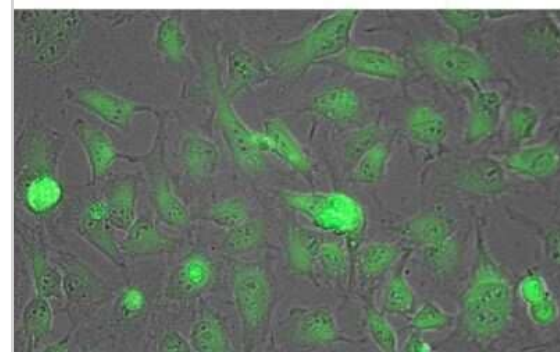
NOTE: Do NOT add Sodium Azide (it inhibits HRP irreversibly).

Images

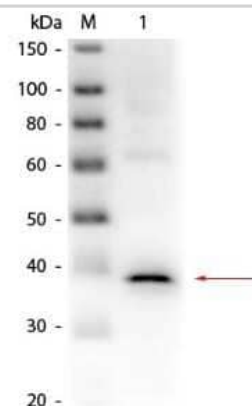
Western Blot: Lactate Dehydrogenase Antibody [HRP] [NB600-863] - Lane 1-4: HeLa cell extracts cytoplasmic fraction (CF). Lane 5-8: HeLa cell extracts nuclear fraction (NF). Load: 30 ug per lane. Primary antibody: LDH antibody at 1:400 for overnight at 4C. Secondary antibody: IRDye800 secondary antibody at 1:10,000 for 45 min at RT. Block: 5% BLOTTO/TBST overnight at 4C. Predicted/Observed size: 36.6 kDa, 36 kDa for LDH. Other band(s): None.



Immunocytochemistry/Immunofluorescence: Lactate Dehydrogenase Antibody [HRP] [NB600-863] - Tissue: HeLa cells. Fixation: fixed for 5 min in 1:1 MeTOH:Acetone, blocked (preservative free) for 15 min. Antigen retrieval: not required. Primary antibody: Lactate Dehydrogenase antibody at 1:200 for 1 h at RT. Secondary antibody: DyLight 488 conjugated Streptavidin antibody at 1:10,000 for 30 min at RT. Staining: Lactate Dehydrogenase as green fluorescent signal.



Western Blot: Lactate Dehydrogenase Antibody [HRP] [NB600-863] - Lane 1: Lactate Dehydrogenase (Rabbit Muscle). Load: 50 ng per lane. Primary antibody: Goat anti-Lactate Dehydrogenase Antibody Peroxidase Conjugated at 1:1,000 overnight at 4C. Secondary antibody: n/a. Block: incubated with blocking buffer for 30 min at RT. Predicted/Observed size: 36.5 kDa, 36.5 kDa for Lactate Dehydrogenase.



Western Blot of Goat Anti-Lactate Dehydrogenase antibody. Lane 1-4: HeLa cell extracts cytoplasmic fraction (CF). Lane 5-8: HeLa cell extracts nuclear fraction (NF). Load: 30 ug per lane. Primary antibody: LDH antibody at 1:400 for overnight at 4C. Secondary antibody: IRDye800 (TM) secondary antibody at 1:10,000 for 45 min at RT. Block: 5% BLOTTO/TBST overnight at 4C. Predicted/Observed size: 36.6 kDa, 36 kDa for LDH. Other band(s): None.



Publications

Koukourakis MI et al. Lactate dehydrogenase-5 (LDH-5) overexpression in non-small-cell lung cancer tissues is linked to tumour hypoxia, angiogenic factor production poor prognosis Br J Cancer 2003-01-01 [PMID: 12942121]

Details:

This citation used the HRP version of this antibody.





Novus Biologicals USA

10730 E. Briarwood Avenue
Centennial, CO 80112
USA
Phone: 303.730.1950
Toll Free: 1.888.506.6887
Fax: 303.730.1966
nb-customerservice@bio-techne.com

Bio-Techne Canada

21 Canmotor Ave
Toronto, ON M8Z 4E6
Canada
Phone: 905.827.6400
Toll Free: 855.668.8722
Fax: 905.827.6402
canada.inquires@bio-techne.com

Bio-Techne Ltd

19 Barton Lane
Abingdon Science Park
Abingdon, OX14 3NB, United Kingdom
Phone: (44) (0) 1235 529449
Free Phone: 0800 37 34 15
Fax: (44) (0) 1235 533420
info.EMEA@bio-techne.com

General Contact Information

www.novusbio.com
Technical Support: nb-technical@bio-techne.com
Orders: nb-customerservice@bio-techne.com
General: novus@novusbio.com

Products Related to NB600-863-0.1mg

NBP1-96886	Goat IgG Isotype Control [HRP]
NBP3-24510	Lactate Dehydrogenase Activity Assay Kit (Colorimetric)
NB300-221	GAPDH Antibody (1D4)
NBP1-48336	Lactate Dehydrogenase A/LDHA Antibody - BSA Free

Limitations

This product is for research use only and is not approved for use in humans or in clinical diagnosis. Primary Antibodies are guaranteed for 1 year from date of receipt.

For more information on our 100% guarantee, please visit www.novusbio.com/guarantee

Earn gift cards/discounts by submitting a review: www.novusbio.com/reviews/submit/NB600-863

Earn gift cards/discounts by submitting a publication using this product:
www.novusbio.com/publications

