

Product Datasheet

Lactate Dehydrogenase Antibody - BSA Free NB600-861-100ug

Unit Size: 100 ug

Store lyophilized antibody at 4C. Aliquot reconstituted liquid and store at -20C. Avoid freeze-thaw cycles.

www.novusbio.com



technical@novusbio.com

Publications: 3

Protocols, Publications, Related Products, Reviews, Research Tools and Images at:
www.novusbio.com/NB600-861

Updated 2/21/2025 v.20.1

Earn rewards for product
reviews and publications.

Submit a publication at www.novusbio.com/publications

Submit a review at www.novusbio.com/reviews/destination/NB600-861



NB600-861-100ug**Lactate Dehydrogenase Antibody - BSA Free**

Product Information	
Unit Size	100 ug
Concentration	LYOPH mg/ml
Storage	Store lyophilized antibody at 4C. Aliquot reconstituted liquid and store at -20C. Avoid freeze-thaw cycles.
Clonality	Polyclonal
Preservative	0.01% Sodium Azide
Reconstitution Instructions	Reconstitute with 100 ul deionized water (or equivalent)
Isotype	IgG
Purity	Multi-step
Buffer	Lyophilized from 0.02 M Potassium Phosphate, 0.15 M Sodium Chloride, pH 7.2

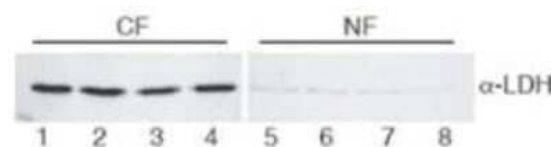
Product Description	
Description	<p>This antibody is an IgG fraction antibody purified from monospecific antiserum by a multi-step process which includes delipidation, salt fractionation and ion exchange chromatography followed by extensive dialysis against the buffer stated above. Assay by immunoelectrophoresis resulted in a single precipitin arc against anti-Goat Serum as well as purified and partially purified Lactate Dehydrogenase [Rabbit Muscle]</p> <p>Store vial at 4C prior to restoration. For extended storage aliquot contents and freeze at -20C or below. Avoid cycles of freezing and thawing. Centrifuge product if not completely clear after standing at room temperature. This product is stable for several weeks at 4C as an undiluted liquid. Dilute only prior to immediate use.</p>
Host	Goat
Gene ID	3945
Gene Symbol	LDHB
Species	Human, Rabbit
Reactivity Notes	BLAST analysis was used to determine that cross reactivity is suggested for both muscle and heart isoforms (LDH-A and LDH-B) from most mammalian species
Specificity/Sensitivity	BLAST analysis was used to determine that cross reactivity is suggested for both muscle and heart isoforms (LDH-A and LDH-B) from most mammalian species.
Immunogen	This Lactate Dehydrogenase Antibody was prepared from whole goat serum produced by repeated immunizations with a full length Lactate Dehydrogenase protein isolated from rabbit muscle. (Uniprot: P13491)

Product Application Details	
Applications	Western Blot, ELISA, Immunocytochemistry/ Immunofluorescence, Immunoprecipitation
Recommended Dilutions	Western Blot 1:1000-1:5000, ELISA 1:2000-1:10000, Immunocytochemistry/ Immunofluorescence 1:200, Immunoprecipitation 1:100
Application Notes	This product is suitable for use in ELISA, western blot, and immunofluorescence. Specific conditions for reactivity should be optimized by the end user. Expect a band approximately 36 kDa in size corresponding to LDH western blotting in the appropriate cell lysate or extract.

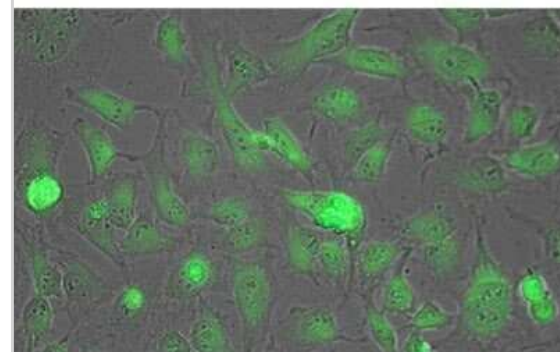


Images

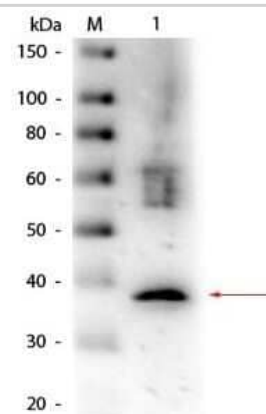
Western Blot: Lactate Dehydrogenase Antibody [NB600-861] - Analysis using HRP conjugate of NB600-861. Lane 1-4: HeLa cell extracts cytoplasmic fraction (CF). Lane 5-8: HeLa cell extracts nuclear fraction (NF). Load: 30 ug per lane. Primary antibody: LDH antibody at 1:400 for overnight at 4C. Secondary antibody: IRDye800 secondary antibody at 1:10,000 for 45 min at RT. Block: 5% BLOTTO/TBST overnight at 4C. Predicted/Observed size: 36.6 kDa, 36 kDa for LDH. Other band(s): None.



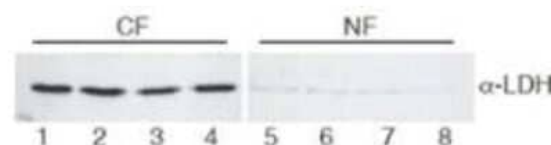
Immunocytochemistry/Immunofluorescence: Lactate Dehydrogenase Antibody [NB600-861] - Analysis of HRP conjugate of NB600-861. Tissue: HeLa cells. Fixation: fixed for 5 min in 1:1 MeTOH:Acetone, blocked (preservative free) for 15 min. Antigen retrieval: not required. Primary antibody: Lactate Dehydrogenase antibody at 1:200 for



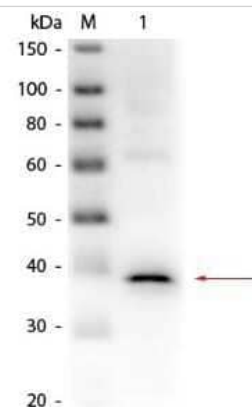
Western Blot: Lactate Dehydrogenase Antibody [NB600-861] - Analysis using Biotin conjugate of NB600-861. Lane 1: Lactate Dehydrogenase (Rabbit Muscle). Load: 50 ng per lane. Primary antibody: Goat anti-Lactate Dehydrogenase Antibody Biotin Conjugated at 1:1,000 overnight at 4C. Secondary antibody: HRP streptavidin secondary antibody at 1:40,000 for 30 min at RT. Block: incubated with blocking buffer for 30 min at RT. Predicted/Observed size: 36.5 kDa, 36.5 kDa for Lactate Dehydrogenase.



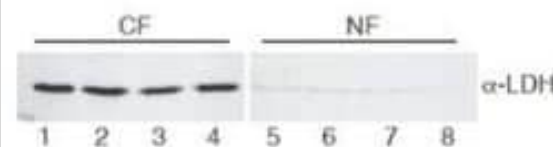
Western Blot: Lactate Dehydrogenase Antibody [NB600-861] - Analysis using Biotin conjugate of NB600-861. Lane 1-4: HeLa cell extracts cytoplasmic fraction (CF). Lane 5-8: HeLa cell extracts nuclear fraction (NF). Load: 30 ug per lane. Primary antibody: LDH antibody at 1:400 for overnight at 4C. Secondary antibody: IRDye800 secondary antibody at 1:10,000 for 45 min at RT. Block: 5% BLOTTO/TBST overnight at 4C. Predicted/Observed size: 36.6 kDa, 36 kDa for LDH. Other band(s): None.



Western Blot: Lactate Dehydrogenase Antibody [NB600-861] - Analysis using HRP conjugate of NB600-861. Lane 1: Lactate Dehydrogenase (Rabbit Muscle). Load: 50 ng per lane. Primary antibody: Goat anti-Lactate Dehydrogenase Antibody Peroxidase Conjugated at 1:1,000 overnight at 4C. Secondary antibody: n/a. Block: incubated with blocking buffer for 30 min at RT. Predicted/Observed size: 36.5 kDa, 36.5 kDa for Lactate Dehydrogenase.



Western Blot of Goat Anti-Lactate Dehydrogenase antibody. Lane 1-4: HeLa cell extracts cytoplasmic fraction (CF). Lane 5-8: HeLa cell extracts nuclear fraction (NF). Load: 30 ug per lane. Primary antibody: LDH antibody at 1:400 for overnight at 4C. Secondary antibody: IRDye800 (TM) secondary antibody at 1:10,000 for 45 min at RT. Block: 5% BLOTTO/TBST overnight at 4C. Predicted/Observed size: 36.6 kDa, 36 kDa for LDH. Other band(s): None.



Publications

Zhang F, Liu L, Xie Y et al. Cardiac contractility modulation ameliorates myocardial metabolic remodeling in a rabbit model of chronic heart failure through activation of AMPK and PPAR- γ pathway Open Med (Wars) 2022-02-22 [PMID: 35799598] (Western Blot)

Koukourakis MI et al. Lactate dehydrogenase-5 (LDH-5) overexpression in non-small-cell lung cancer tissues is linked to tumour hypoxia, angiogenic factor production poor prognosis Br J Cancer 2003-01-01 [PMID: 12942121]

Details:

This citation used the HRP version of this antibody.

Crawford RM et al. M-LDH serves as a sarcolemmal K(ATP) channel subunit essential for cell protection against ischemia. EMBO J 21:3936-48. 2002-01-01 [PMID: 12145195]



Novus Biologicals USA

10730 E. Briarwood Avenue
Centennial, CO 80112
USA
Phone: 303.730.1950
Toll Free: 1.888.506.6887
Fax: 303.730.1966
nb-customerservice@bio-techne.com

Bio-Techne Canada

21 Canmotor Ave
Toronto, ON M8Z 4E6
Canada
Phone: 905.827.6400
Toll Free: 855.668.8722
Fax: 905.827.6402
canada.inquires@bio-techne.com

Bio-Techne Ltd

19 Barton Lane
Abingdon Science Park
Abingdon, OX14 3NB, United Kingdom
Phone: (44) (0) 1235 529449
Free Phone: 0800 37 34 15
Fax: (44) (0) 1235 533420
info.EMEA@bio-techne.com

General Contact Information

www.novusbio.com
Technical Support: nb-technical@bio-techne.com
Orders: nb-customerservice@bio-techne.com
General: novus@novusbio.com

Products Related to NB600-861-100ug

HAF017	Rabbit anti-Goat IgG Secondary Antibody [HRP (Horseradish Peroxidase)]
HAF109	Donkey anti-Goat IgG Secondary Antibody [HRP (Horseradish Peroxidase)]
NB410-28088-1mg	Goat IgG Isotype Control
NBP3-24510	Lactate Dehydrogenase Activity Assay Kit (Colorimetric)

Limitations

This product is for research use only and is not approved for use in humans or in clinical diagnosis. Primary Antibodies are guaranteed for 1 year from date of receipt.

For more information on our 100% guarantee, please visit www.novusbio.com/guarantee

Earn gift cards/discounts by submitting a review: www.novusbio.com/reviews/submit/NB600-861

Earn gift cards/discounts by submitting a publication using this product:
www.novusbio.com/publications



