

# Product Datasheet

## Methyl-Lysine Antibody - Azide and BSA Free NB600-824-25ug

Unit Size: 25 ug

Store at -20 °C.

[www.novusbio.com](http://www.novusbio.com)



[technical@novusbio.com](mailto:technical@novusbio.com)

### Publications: 5

Protocols, Publications, Related Products, Reviews, Research Tools and Images at:  
[www.novusbio.com/NB600-824](http://www.novusbio.com/NB600-824)

Updated 9/9/2025 v.20.1

Earn rewards for product  
reviews and publications.

Submit a publication at [www.novusbio.com/publications](http://www.novusbio.com/publications)

Submit a review at [www.novusbio.com/reviews/destination/NB600-824](http://www.novusbio.com/reviews/destination/NB600-824)



**NB600-824-25ug**

Methyl-Lysine Antibody - Azide and BSA Free

Product Information	
Unit Size	25 ug
Concentration	1 mg/ml
Storage	Store at -20 °C.
Clonality	Polyclonal
Preservative	No Preservative
Isotype	IgG
Purity	Protein A purified
Buffer	PBS, 50% Glycerol

Product Description	
Description	Novus Biologicals Rabbit Methyl-Lysine Antibody - Azide and BSA Free (NB600-824) is a polyclonal antibody validated for use in WB, ELISA, ICC/IF and IP. Anti-Methyl-Lysine Antibody: Cited in 4 publications. All Novus Biologicals antibodies are covered by our 100% guarantee.
Host	Rabbit
Species	Non-species specific
Specificity/Sensitivity	Detects proteins containing methylated lysine residues.
Immunogen	Methylated KLH Conjugated

Product Application Details	
Applications	Western Blot, ELISA, Immunocytochemistry/ Immunofluorescence, Immunoprecipitation
Recommended Dilutions	Western Blot 1:2000-1:5000, ELISA 1:100-1:2000, Immunocytochemistry/ Immunofluorescence 1:200, Immunoprecipitation 1:10-1:500
Application Notes	0.2-0.5 ug/mL of Methyl-Lysine Antibody was sufficient for detection of the methylated histone by Western blot analysis using melanoma cells in TBSt.

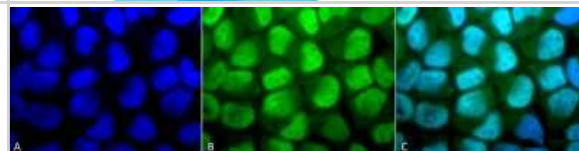


## Images

Western Blot: Methyl-Lysine Antibody [NB600-824] - Western blot analysis of Bovine serum albumin showing detection of Methyl-Lysine protein using Rabbit Anti-Methyl-Lysine Polyclonal Antibody (NB600-824). Primary Antibody: Rabbit Anti-Methyl-Lysine Polyclonal Antibody (NB600-824) at 1:1000. Methyl-Lysine in BSA (Left) and Methylated BSA (Right).



Immunocytochemistry/Immunofluorescence: Methyl-Lysine Antibody [NB600-824] - Tissue: HeLa Cells. Species: Human. Fixation: 2% Formaldehyde for 20 min at RT. Primary Antibody: Rabbit Anti-Methylated Lysine Polyclonal Antibody at 1:50 for 12 hours at 4 degrees C. Secondary Antibody: FITC Goat Anti-Rabbit (green) at 1:200 for 2 hours at RT. Counterstain: DAPI (blue) nuclear stain at 1:40000 for 2 hours at RT. Localization: Nucleus. Cytoplasm. Magnification: 100x. (A) DAPI (blue) nuclear stain. (B) Anti-Methylated Lysine Antibody. (C) Composite.



## Publications

Wang Z, Guo W, Zhang X et al. Tumor microenvironment-associated oxidative stress impairs SIRT1 secretion to suppress anti-tumor immune response. *Cell reports* 2025-05-07 [PMID: 40343797]

Roberts JL, Liu G, Paglia DN et al. Deletion of Wnt5a in osteoclasts results in bone loss through decreased bone formation *Annals of the New York Academy of Sciences* 2020-03-01 [PMID: 31919867] (Immunoprecipitation, Western Blot, Human)

Dukic T, Smiljanic K, Mihailovic J et al. Proteomic Profiling of Major Peanut Allergens and Their Post-Translational Modifications Affected by Roasting Foods (Basel, Switzerland) 2022-12-09 [PMID: 36553735] (WB)

Walker C, Batan D, Bishop C et al. Extracellular matrix stiffness controls cardiac valve myofibroblast activation through epigenetic remodeling *Bioengineering & Translational Medicine* 2022-08-22 [PMID: 36176599] (ICC/IF, Porcine)

Details:

Dilution used for ICC 1:500

Bao L, Chen Y, et al. Methylation of hypoxia-inducible factor (HIF)-1 alpha by G9a/GLP inhibits HIF-1 transcriptional activity and cell migration. *Nucleic Acids Res* 2018-07-27 [PMID: 29860315] (WB, IP, Human)



### **Novus Biologicals USA**

10730 E. Briarwood Avenue  
Centennial, CO 80112  
USA  
Phone: 303.730.1950  
Toll Free: 1.888.506.6887  
Fax: 303.730.1966  
nb-customerservice@bio-techne.com

### **Bio-Techne Canada**

21 Canmotor Ave  
Toronto, ON M8Z 4E6  
Canada  
Phone: 905.827.6400  
Toll Free: 855.668.8722  
Fax: 905.827.6402  
canada.inquires@bio-techne.com

### **Bio-Techne Ltd**

19 Barton Lane  
Abingdon Science Park  
Abingdon, OX14 3NB, United Kingdom  
Phone: (44) (0) 1235 529449  
Free Phone: 0800 37 34 15  
Fax: (44) (0) 1235 533420  
info.EMEA@bio-techne.com

### **General Contact Information**

www.novusbio.com  
Technical Support: nb-technical@bio-techne.com  
Orders: nb-customerservice@bio-techne.com  
General: novus@novusbio.com

### **Products Related to NB600-824-25ug**

---

NBP2-33376H	Blue Marker Antibody (6F4-F6) [HRP]
HAF008	Goat anti-Rabbit IgG Secondary Antibody [HRP]
NB7160	Goat anti-Rabbit IgG (H+L) Secondary Antibody [HRP]
NBP2-24891	Rabbit IgG Isotype Control

---

### **Limitations**

This product is for research use only and is not approved for use in humans or in clinical diagnosis. Primary Antibodies are guaranteed for 1 year from date of receipt.

For more information on our 100% guarantee, please visit [www.novusbio.com/guarantee](http://www.novusbio.com/guarantee)

Earn gift cards/discounts by submitting a review: [www.novusbio.com/reviews/submit/NB600-824](http://www.novusbio.com/reviews/submit/NB600-824)

Earn gift cards/discounts by submitting a publication using this product:  
[www.novusbio.com/publications](http://www.novusbio.com/publications)

