

Product Datasheet

Cofilin 2 Antibody NB600-800

Unit Size: 0.1 mg

Store at -20C. Avoid freeze-thaw cycles.

www.novusbio.com



technical@novusbio.com

Publications: 1

Protocols, Publications, Related Products, Reviews, Research Tools and Images at:
www.novusbio.com/NB600-800

Updated 10/23/2024 v.20.1

Earn rewards for product
reviews and publications.

Submit a publication at www.novusbio.com/publications

Submit a review at www.novusbio.com/reviews/destination/NB600-800



NB600-800**Cofilin 2 Antibody****Product Information**

Unit Size	0.1 mg
Concentration	0.5 mg/ml
Storage	Store at -20C. Avoid freeze-thaw cycles.
Clonality	Polyclonal
Preservative	0.02% Sodium Azide
Isotype	IgG
Purity	Immunogen affinity purified
Buffer	Tris saline (20 mM Tris pH 7.3, 150 mM NaCl), 0.5% BSA

Product Description

Host	Goat
Gene ID	1073
Gene Symbol	CFL2
Species	Human, Mouse, Rat
Specificity/Sensitivity	This antibody is expected to recognise both reported isoforms (NP_068733 and NP_619579)
Immunogen	Peptide with sequence C-DIKDRSTLGEK corresponding to C-Terminus according to NP_068733.1, NP_619579.1.

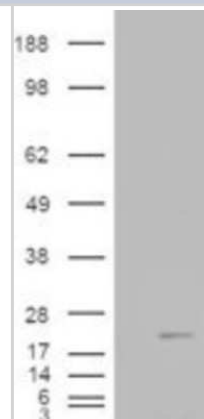
Product Application Details

Applications	Western Blot, Peptide ELISA
Recommended Dilutions	Western Blot 0.01 - 0.03 ug/ml, Peptide ELISA Detection limit 1:128000
Application Notes	WB: Approx. 18 kDa band observed in human duodenum, heart, and skeletal muscle lysates and in mouse/rat heart lysates (calculated MW of 18.7 kDa band according to NP_068733.1 and NP_619579.1).

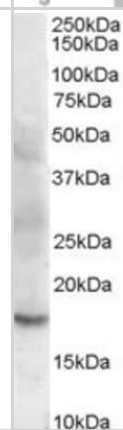


Images

Western Blot: Cofilin 2 Antibody [NB600-800] - HEK293 overexpressing Human Muscle Cofilin 2 and probed with (mock transfection in first lane).



Western Blot: Cofilin 2 Antibody [NB600-800] - Analysis of Human Muscle lysate (35 ug protein in RIPA buffer). Primary incubation was 1 hour. Detected by chemiluminescence.



Publications

Thirion C, Stucka R, Mendel B et al. Characterization of human muscle type cofilin (CFL2) in normal and regenerating muscle. Eur J Biochem 2001-06-01 [PMID: 11422377]



Novus Biologicals USA

10730 E. Briarwood Avenue
Centennial, CO 80112
USA
Phone: 303.730.1950
Toll Free: 1.888.506.6887
Fax: 303.730.1966
nb-customerservice@bio-techne.com

Bio-Techne Canada

21 Canmotor Ave
Toronto, ON M8Z 4E6
Canada
Phone: 905.827.6400
Toll Free: 855.668.8722
Fax: 905.827.6402
canada.inquires@bio-techne.com

Bio-Techne Ltd

19 Barton Lane
Abingdon Science Park
Abingdon, OX14 3NB, United Kingdom
Phone: (44) (0) 1235 529449
Free Phone: 0800 37 34 15
Fax: (44) (0) 1235 533420
info.EMEA@bio-techne.com

General Contact Information

www.novusbio.com
Technical Support: nb-technical@bio-techne.com
Orders: nb-customerservice@bio-techne.com
General: novus@novusbio.com

Products Related to NB600-800

NB820-59253	Human Skeletal Muscle Whole Tissue Lysate (Adult Whole Normal)
HAF017	Rabbit anti-Goat IgG Secondary Antibody [HRP (Horseradish Peroxidase)]
HAF109	Donkey anti-Goat IgG Secondary Antibody [HRP (Horseradish Peroxidase)]
NB410-28088-1mg	Goat IgG Isotype Control

Limitations

This product is for research use only and is not approved for use in humans or in clinical diagnosis. Primary Antibodies are guaranteed for 1 year from date of receipt.

For more information on our 100% guarantee, please visit www.novusbio.com/guarantee

Earn gift cards/discounts by submitting a review: www.novusbio.com/reviews/submit/NB600-800

Earn gift cards/discounts by submitting a publication using this product:
www.novusbio.com/publications



