

Product Datasheet

Amylin Antibody (R10/99) NB600-713

Unit Size: 1 ml

Store at 4C short term. Aliquot and store at -20C long term. Avoid freeze-thaw cycles.

www.novusbio.com



technical@novusbio.com

Publications: 7

Protocols, Publications, Related Products, Reviews, Research Tools and Images at:
www.novusbio.com/NB600-713

Updated 10/23/2024 v.20.1

Earn rewards for product
reviews and publications.

Submit a publication at www.novusbio.com/publications

Submit a review at www.novusbio.com/reviews/destination/NB600-713



NB600-713

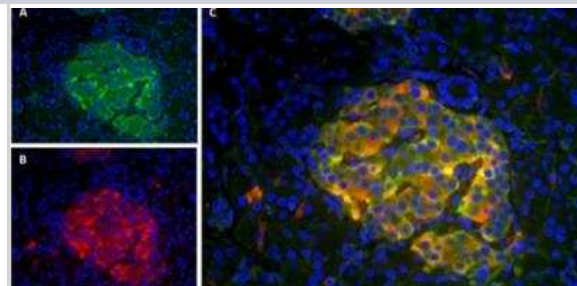
Amylin Antibody (R10/99)

Product Information	
Unit Size	1 ml
Concentration	This product is unpurified. The exact concentration of antibody is not quantifiable.
Storage	Store at 4C short term. Aliquot and store at -20C long term. Avoid freeze-thaw cycles.
Clonality	Monoclonal
Clone	R10/99
Preservative	<0.1% Sodium Azide
Isotype	IgG1
Purity	Tissue culture supernatant
Buffer	Tissue culture supernatant
Product Description	
Host	Mouse
Gene ID	3375
Gene Symbol	IAPP
Species	Human
Specificity/Sensitivity	The is of high affinity, and stains islet amyloid peptide in intra-cellular insulin granules, intra-cellular amyloid and extra-cellular islet amyloid.
Immunogen	A peptide CATQRLANFLV corresponding to residues 40-50 of human IAPP coupled to tuberculin
Product Application Details	
Applications	Immunohistochemistry, Immunohistochemistry-Frozen, Immunohistochemistry-Paraffin
Recommended Dilutions	Immunohistochemistry 1:10-1:500, Immunohistochemistry-Paraffin 1:100, Immunohistochemistry-Frozen 1:100
Application Notes	IHC-P: Use at a dilution of 1/100. Antigen retrieval is not essential but may optimise staining. IHC-Fr: Use at a dilution of 1/100. This product does not require protein digestion pre-treatment of paraffin sections. This product does not require antigen retrieval using heat treatment prior to staining of paraffin sections.

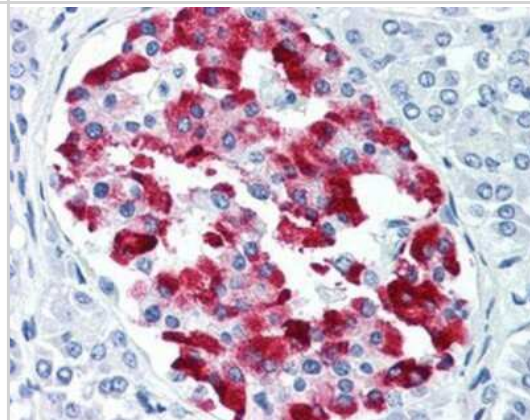


Images

Immunocytochemistry/Immunofluorescence: Amylin Antibody (R10/99) [NB600-713] - Staining of paraffin embedded human pancreas using Guinea Pig anti-Pig Insulin antibody (A) and Mouse anti-Human Amylin antibody (B). Merged image showing co-localization of the two proteins (C). DAPI was used as nuclear counterstain (blue)



Immunohistochemistry-Paraffin: Amylin Antibody (R10/99) [NB600-713] - Human pancreas with Mouse anti Human Amylin Peptide, showing labeling of Islet of Langerhans.



Publications

Burillo J, Fernández-Rhodes M, Piquero M, et al. Human amylin aggregates release within exosomes as a protective mechanism in pancreatic β cells: Pancreatic β -hippocampal cell communication *Biochimica et biophysica acta*. Molecular cell research 2021-01-27 [PMID: 33515645]

Gurlo T, Ryazantsev S, Huang CJ et al. Evidence for proteotoxicity in beta cells in type 2 diabetes: toxic islet amyloid polypeptide oligomers form intracellularly in the secretory pathway. *Am J Pathol*. 2010-02-01 [PMID: 20042670]

Zhao H, Guan J, Lee HM et al. Up-regulated pancreatic tissue microRNA-375 associates with human type 2 diabetes through beta-cell deficit and islet amyloid deposition. *Pancreas*. 2010-08-01 [PMID: 20467341]

Zhao HL, Sui Y, Guan J et al. Amyloid oligomers in diabetic and nondiabetic human pancreas. *Transl Res*. 2009-01-01 [PMID: 19100955]

Nakamura S, Okabayashi S, Ageyama N et al. Transthyretin amyloidosis and two other aging-related amyloidoses in an aged vervet monkey. *Vet Pathol*. 2008-01-01 [PMID: 18192580]

Bhattacharya S, Latha JN, Kumresan R et al. Cloning and expression of human islet amyloid polypeptide in cultured cells. *Biochem Biophys Res Commun*. 2007-05-01 [PMID: 17374526]

Gong W, Liu ZH, Zeng CH et al. Amylin deposition in the kidney of patients with diabetic nephropathy. *Kidney Int*. 2007-07-01 [PMID: 17495860]



Novus Biologicals USA

10730 E. Briarwood Avenue
Centennial, CO 80112
USA
Phone: 303.730.1950
Toll Free: 1.888.506.6887
Fax: 303.730.1966
nb-customerservice@bio-techne.com

Bio-Techne Canada

21 Canmotor Ave
Toronto, ON M8Z 4E6
Canada
Phone: 905.827.6400
Toll Free: 855.668.8722
Fax: 905.827.6402
canada.inquires@bio-techne.com

Bio-Techne Ltd

19 Barton Lane
Abingdon Science Park
Abingdon, OX14 3NB, United Kingdom
Phone: (44) (0) 1235 529449
Free Phone: 0800 37 34 15
Fax: (44) (0) 1235 533420
info.EMEA@bio-techne.com

General Contact Information

www.novusbio.com
Technical Support: nb-technical@bio-techne.com
Orders: nb-customerservice@bio-techne.com
General: novus@novusbio.com

Products Related to NB600-713

NBL1-11800	Amylin Overexpression Lysate
HAF007	Goat anti-Mouse IgG Secondary Antibody [HRP]
NB720-B	Rabbit anti-Mouse IgG (H+L) Secondary Antibody [Biotin]
NBP1-97005-0.5mg	Mouse IgG1 Isotype Control (MG1)

Limitations

This product is for research use only and is not approved for use in humans or in clinical diagnosis. Primary Antibodies are guaranteed for 1 year from date of receipt.

For more information on our 100% guarantee, please visit www.novusbio.com/guarantee

Earn gift cards/discounts by submitting a review: www.novusbio.com/reviews/submit/NB600-713

Earn gift cards/discounts by submitting a publication using this product:
www.novusbio.com/publications

