

Product Datasheet

Ribonuclease A Antibody - BSA Free NB600-648-100ug

Unit Size: 100 ug

Store lyophilized antibody at 4C. Aliquot reconstituted liquid and store at -20C. Avoid freeze-thaw cycles.

www.novusbio.com



technical@novusbio.com

Publications: 2

Protocols, Publications, Related Products, Reviews, Research Tools and Images at:
www.novusbio.com/NB600-648

Updated 2/21/2025 v.20.1

Earn rewards for product
reviews and publications.

Submit a publication at www.novusbio.com/publications

Submit a review at www.novusbio.com/reviews/destination/NB600-648



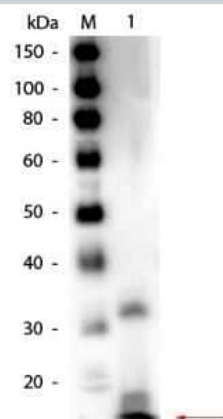
NB600-648-100ug

Ribonuclease A Antibody - BSA Free

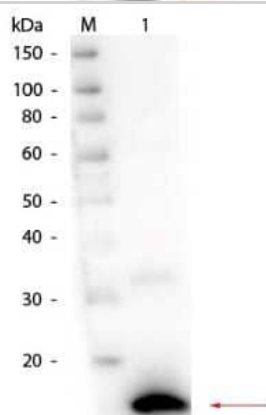
Product Information	
Unit Size	100 ug
Concentration	LYOPH mg/ml
Storage	Store lyophilized antibody at 4C. Aliquot reconstituted liquid and store at -20C. Avoid freeze-thaw cycles.
Clonality	Polyclonal
Preservative	0.01% Sodium Azide
Reconstitution Instructions	Reconstitute with 100 ul deionized water (or equivalent)
Isotype	IgG
Purity	Multi-step
Buffer	Lyophilized from 0.02 M Potassium Phosphate, 0.15 M Sodium Chloride, pH 7.2
Product Description	
Description	<p>This antibody is an IgG fraction antibody purified from monospecific antiserum by a multi-step process which includes delipidation, salt fractionation and ion exchange chromatography followed by extensive dialysis against the buffer stated above. Assay by immunoelectrophoresis resulted in a single precipitin arc against anti-Rabbit Serum as well as purified and partially purified Ribonuclease A [Bovine pancreas]</p> <p>Store vial at 4C prior to restoration. For extended storage aliquot contents and freeze at -20C or below. Avoid cycles of freezing and thawing. Centrifuge product if not completely clear after standing at room temperature. This product is stable for several weeks at 4C as an undiluted liquid. Dilute only prior to immediate use.</p>
Host	Rabbit
Gene ID	6035
Gene Symbol	RNASE1
Species	Bovine
Reactivity Notes	Cross reactivity against Ribonuclease A from other tissues and species may occur but have not been specifically determined
Specificity/Sensitivity	Cross reactivity against Ribonuclease A from other tissues and species may occur but have not been specifically determined.
Immunogen	Ribonuclease A [Bovine pancreas] (Uniprot: P61823)
Product Application Details	
Applications	Western Blot, ELISA, Immunoprecipitation
Recommended Dilutions	Western Blot 1:500-1:5000, ELISA 1:5000-1:20000, Immunoprecipitation 1:100
Application Notes	This product has been tested by western blot and is suitable to be assayed against 1.0 ug of Ribonuclease A [Bovine pancreas] in a standard ELISA using Peroxidase conjugated Affinity Purified anti-Rabbit IgG [H&L] (Goat) and (ABTS (2,2'-azino-bis-[3-ethylbenthiozoline-6-sulfonic acid])) as a substrate for 30 minutes at room temperature. A working dilution of 1:40,000 to 1:180,000 is suggested for this product.

Images

Western Blot: Ribonuclease A Antibody [NB600-648] - Analysis using Biotin conjugate of NB600-648. Lane 1: Ribonuclease A (Bovine Pancreas). Load: 50 ng per lane. Primary antibody: Rabbit anti-Ribonuclease A Antibody Biotin Conjugated at 1:1,000 overnight at 4C. Secondary antibody: HRP streptavidin secondary antibody at 1:40,000 for 30 min at RT. Block: incubated with blocking buffer for 30 min at RT. Predicted/Observed size: 16.5 kDa, 16.5 kDa for Ribonuclease A. Other band(s): Possible dimerization.



Western Blot: Ribonuclease A Antibody [NB600-648] - Lane 1: Ribonuclease A (Bovine Pancreas). Load: 50 ng per lane. Primary antibody: Ribonuclease A (Bovine Pancreas) Antibody at 1:1,000 overnight at 4C. Secondary antibody: HRP rabbit secondary antibody at 1:40,000 for 30 min at RT. Block: incubated with blocking buffer for 30 min at RT. Predicted/Observed size: 16.5 kDa, 16.5 kDa for Ribonuclease A.



Publications

Chika Tsutsumi, Kaiku Uegaki, Riyuji Yamashita, Ryo Ushioda, Kazuhiro Nagata Zn²⁺-dependent functional switching of ERp18, an ER-resident thioredoxin-like protein. Cell reports 2024-03-04 [PMID: 38330940]

Shang Y, Zeng Y, Zeng Y. Integrated Microfluidic Lectin Barcode Platform for High-Performance Focused Glycomic Profiling. Sci Rep. 2016-02-02 [PMID: 26831207]

Details:

This citation used the Biotin version of this antibody.



Novus Biologicals USA

10730 E. Briarwood Avenue
Centennial, CO 80112
USA
Phone: 303.730.1950
Toll Free: 1.888.506.6887
Fax: 303.730.1966
nb-customerservice@bio-techne.com

Bio-Techne Canada

21 Canmotor Ave
Toronto, ON M8Z 4E6
Canada
Phone: 905.827.6400
Toll Free: 855.668.8722
Fax: 905.827.6402
canada.inquires@bio-techne.com

Bio-Techne Ltd

19 Barton Lane
Abingdon Science Park
Abingdon, OX14 3NB, United Kingdom
Phone: (44) (0) 1235 529449
Free Phone: 0800 37 34 15
Fax: (44) (0) 1235 533420
info.EMEA@bio-techne.com

General Contact Information

www.novusbio.com
Technical Support: nb-technical@bio-techne.com
Orders: nb-customerservice@bio-techne.com
General: novus@novusbio.com

Products Related to NB600-648-100ug

HAF008	Goat anti-Rabbit IgG Secondary Antibody [HRP]
NB7160	Goat anti-Rabbit IgG (H+L) Secondary Antibody [HRP]
NBP2-24891	Rabbit IgG Isotype Control
NBP3-12164-10ug	Recombinant Human Ribonuclease A His Protein

Limitations

This product is for research use only and is not approved for use in humans or in clinical diagnosis. Primary Antibodies are guaranteed for 1 year from date of receipt.

For more information on our 100% guarantee, please visit www.novusbio.com/guarantee

Earn gift cards/discounts by submitting a review: www.novusbio.com/reviews/submit/NB600-648

Earn gift cards/discounts by submitting a publication using this product:
www.novusbio.com/publications

