

Product Datasheet

DLL1 Antibody NB600-628

Unit Size: 0.1 mg

Store at -20C short term. Aliquot and store at -80C long term. Avoid freeze-thaw cycles.

www.novusbio.com



technical@novusbio.com

Protocols, Publications, Related Products, Reviews, Research Tools and Images at:
www.novusbio.com/NB600-628

Updated 10/23/2024 v.20.1

Earn rewards for product
reviews and publications.

Submit a publication at www.novusbio.com/publications

Submit a review at www.novusbio.com/reviews/destination/NB600-628



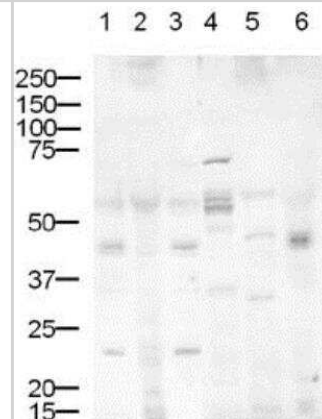
NB600-628

DLL1 Antibody

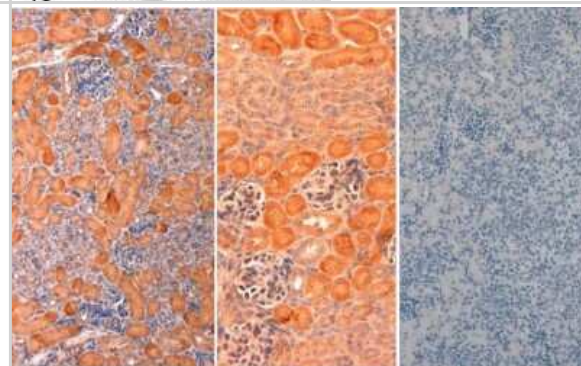
Product Information	
Unit Size	0.1 mg
Concentration	Please see the vial label for concentration. If unlisted please contact technical services.
Storage	Store at -20C short term. Aliquot and store at -80C long term. Avoid freeze-thaw cycles.
Clonality	Polyclonal
Preservative	0.01% Sodium Azide
Isotype	IgG
Purity	Immunogen affinity purified
Buffer	0.02 M Potassium Phosphate, 0.15 M Sodium Chloride, pH 7.2
Product Description	
Description	<p>This antibody was affinity purified antibody produced by immunoaffinity chromatography using the immunizing peptide after immobilization to a solid phase</p> <p>Store vial at -20C prior to opening. Aliquot contents and freeze at -20C or below for extended storage. Avoid cycles of freezing and thawing. Centrifuge product if not completely clear after standing at room temperature. This product is stable for several weeks at 4C as an undiluted liquid. Dilute only prior to immediate use.</p>
Host	Rabbit
Gene ID	28514
Gene Symbol	DLL1
Species	Mouse
Reactivity Notes	Activity against DLL11 from other species has not been determined but is expected based on sequence homology. Expected to cross-react with rat, human and chicken.
Specificity/Sensitivity	The antibody detects DLL1 from mouse. Activity against Delta-1 from other species has not been determined but is expected based on sequence homology. Expected to cross-react with rat, human and chicken.
Immunogen	This affinity purified DLL1 Antibody was prepared from whole rabbit serum produced by repeated immunizations with a synthetic peptide corresponding to an internal region near amino acids 150-175 of Mouse DLL1. (Uniprot: Q61483)
Product Application Details	
Applications	Western Blot, ELISA, Immunohistochemistry
Recommended Dilutions	Western Blot 1:100-1:1000, ELISA 1:3000-1:12000, Immunohistochemistry 2ug/ml
Application Notes	This product has been tested for use in ELISA against the immunizing peptide, western blot, and in IHC. Reactivity in other immunoassays is unknown.

Images

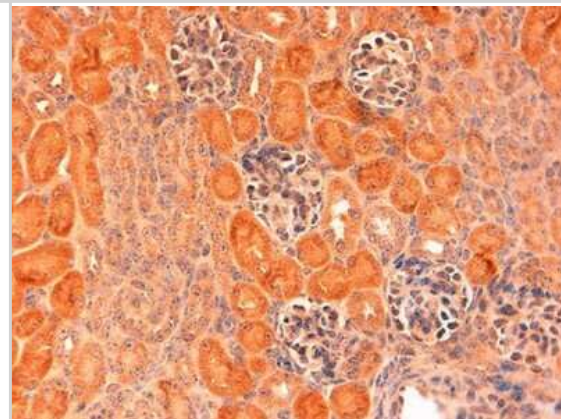
Western Blot: DLL1 Antibody [NB600-628]



Immunohistochemistry: DLL1 Antibody [NB600-628] -
Immunohistochemistry of DLL1 antibody Tissue: Mouse Embryonic Kidney. Fixation: FFPE buffered formalin 10% conc. Ag Retrieval: Heat, Citrate pH 6.2. Pressure Cooker (left, right), EDTA pH 9.5 Pressure Cooker (middle). Primary antibody: 2ug/ml 1.5 hour @ room temp. Secondary Ab: MACH 1 HRP POLYMER at 1:50 for 45" RT.

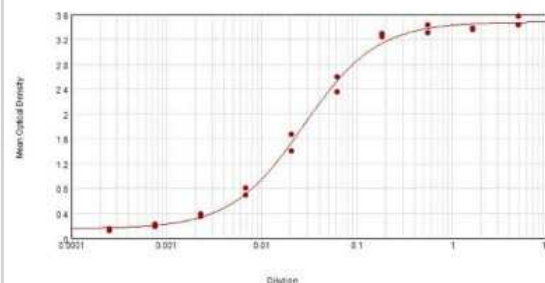


Immunohistochemistry: DLL1 Antibody [NB600-628] -
Immunohistochemistry of DLL1 antibody. Tissue: Mouse embryonic kidney. Fixation: formalin fixed paraffin embedded 10% conc. Antigen retrieval: pH 9.5. Primary antibody: 2ug/ml for 1.5 hour @ room Temp. Secondary antibody: Peroxidase secondary reagent for 45 min at RT. Localization: as shown. Staining: 3,3'-diaminobenzidine tetrahydrochloride was used as the chromogen. Nuclei were counterstained purple with hematoxylin.

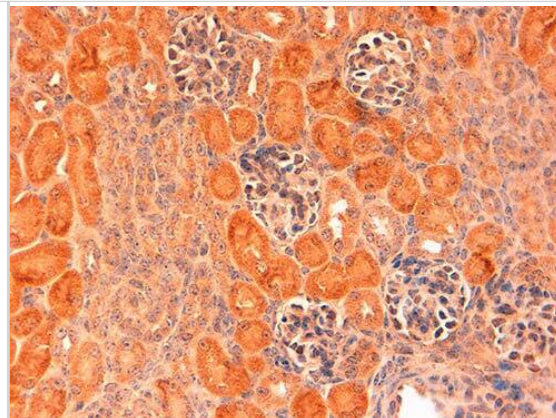


ELISA: DLL1 Antibody [NB600-628] - ELISA results of purified DLL1 antibody tested against BSA-conjugated peptide of immunizing peptide. Each well was coated in duplicate with 0.1ug of conjugate. The starting dilution of antibody was 5ug/ml and the X-axis represents the Log10 of a 3-fold dilution. This titration is a 4-parameter curve fit where the IC50 is defined as the titer of the antibody. Assay performed using 3% fish gel, Goat anti-Rabbit IgG Antibody Peroxidase Conjugated (Min X Bv Ch Gt GP Ham Hs Hu Ms Rt & Sh Serum Proteins) and TMB ELISA Peroxidase Substrate.

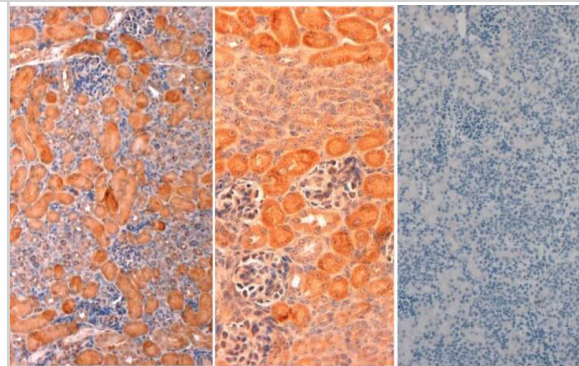
Anti-Mouse DELTA-1-Specificity



Immunohistochemistry of Rabbit Anti-Delta1 antibody. Tissue: Mouse embryonic kidney. Fixation: formalin fixed paraffin embedded 10% conc. Antigen retrieval: pH 9.5. Primary antibody: 2ug/ml for 1.5 hour @ room Temp. Secondary antibody: Peroxidase secondary reagent for 45 min at RT. Localization: as shown. Staining: 3,3'-diaminobenzidine tetrahydrochloride was used as the chromogen. Nuclei were counterstained purple with hematoxylin.



Immunohistochemistry of Rabbit anti-mouse DELTA1 Antibody in Mouse Embryonic Kidney Tissue: Mouse Embryonic Kidney. Fixation: FFPE buffered formalin 10% conc. Ag Retrieval: Heat, Citrate pH 6.2. Pressure Cooker (left, right), EDTA pH 9.5 Pressure Cooker (middle). Primary antibody: 2ug/ml 1.5 hour @ room temp. Secondary Ab: MACH 1 HRP POLYMER at 1:50 for 45" RT.





Novus Biologicals USA

10730 E. Briarwood Avenue
Centennial, CO 80112
USA
Phone: 303.730.1950
Toll Free: 1.888.506.6887
Fax: 303.730.1966
nb-customerservice@bio-techne.com

Bio-Techne Canada

21 Canmotor Ave
Toronto, ON M8Z 4E6
Canada
Phone: 905.827.6400
Toll Free: 855.668.8722
Fax: 905.827.6402
canada.inquires@bio-techne.com

Bio-Techne Ltd

19 Barton Lane
Abingdon Science Park
Abingdon, OX14 3NB, United Kingdom
Phone: (44) (0) 1235 529449
Free Phone: 0800 37 34 15
Fax: (44) (0) 1235 533420
info.EMEA@bio-techne.com

General Contact Information

www.novusbio.com
Technical Support: nb-technical@bio-techne.com
Orders: nb-customerservice@bio-techne.com
General: novus@novusbio.com

Products Related to NB600-628

HAF008	Goat anti-Rabbit IgG Secondary Antibody [HRP]
NB7160	Goat anti-Rabbit IgG (H+L) Secondary Antibody [HRP]
NBP2-24891	Rabbit IgG Isotype Control
1277-JG-050	Jagged 1 [Unconjugated]

Limitations

This product is for research use only and is not approved for use in humans or in clinical diagnosis. Primary Antibodies are guaranteed for 1 year from date of receipt.

For more information on our 100% guarantee, please visit www.novusbio.com/guarantee

Earn gift cards/discounts by submitting a review: www.novusbio.com/reviews/submit/NB600-628

Earn gift cards/discounts by submitting a publication using this product:
www.novusbio.com/publications

