

Product Datasheet

GLI-1 Antibody [mFluor Violet 500 SE] NB600-600MFV500

Unit Size: 0.1 ml

Store at 4C in the dark.

www.novusbio.com



technical@novusbio.com

Protocols, Publications, Related Products, Reviews, Research Tools and Images at:
www.novusbio.com/NB600-600MFV500

Updated 9/20/2023 v.20.1

Earn rewards for product
reviews and publications.

Submit a publication at www.novusbio.com/publications

Submit a review at www.novusbio.com/reviews/destination/NB600-600MFV500



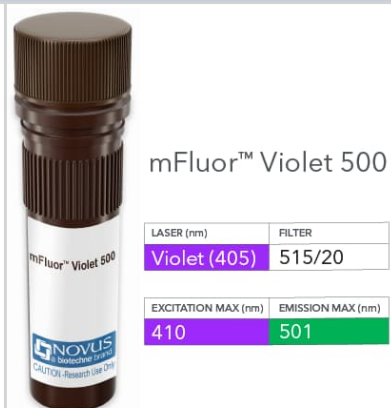
NB600-600MFV500

GLI-1 Antibody [mFluor Violet 500 SE]

Product Information	
Unit Size	0.1 ml
Concentration	Please see the vial label for concentration. If unlisted please contact technical services.
Storage	Store at 4C in the dark.
Clonality	Polyclonal
Preservative	0.05% Sodium Azide
Isotype	IgG
Conjugate	mFluor Violet 500 SE
Purity	Immunogen affinity purified
Buffer	50mM Sodium Borate
Product Description	
Host	Rabbit
Gene ID	2735
Gene Symbol	GLI1
Species	Human, Mouse, Canine
Reactivity Notes	Canine reactivity reported from a verified customer review.
Specificity/Sensitivity	No reaction occurs with human or mouse Gli2 or Gli3.
Immunogen	A synthetic peptide made toward the C-terminus portion of the human GLI-1 protein (between residues 800-850) [Uniprot: P08151]
Notes	mFluor(TM) is a trademark of AAT Bioquest, Inc. This conjugate is made on demand. Actual recovery may vary from the stated volume of this product. The volume will be greater than or equal to the unit size stated on the datasheet.
Product Application Details	
Applications	Western Blot, ELISA, Flow Cytometry, Flow (Intracellular), Immunoblotting, Immunocytochemistry/Immunofluorescence, Immunohistochemistry, Immunohistochemistry-Paraffin, Chromatin Immunoprecipitation (ChIP), Knockdown Validated
Recommended Dilutions	Western Blot, Flow Cytometry, ELISA, Immunohistochemistry, Immunocytochemistry/Immunofluorescence, Immunohistochemistry-Paraffin, Immunoblotting, Flow (Intracellular), Chromatin Immunoprecipitation (ChIP), Knockdown Validated
Application Notes	Optimal dilution of this antibody should be experimentally determined.

Images

GLI-1 Antibody [mFluor Violet 500 SE] - Vial of mFluor Violet 500 conjugated antibody. mFluor Violet 500 is optimally excited at 410 nm by the Violet laser (405 nm) and has an emission maximum of 501 nm.





Novus Biologicals USA

10730 E. Briarwood Avenue
Centennial, CO 80112
USA
Phone: 303.730.1950
Toll Free: 1.888.506.6887
Fax: 303.730.1966
nb-customerservice@bio-techne.com

Bio-Techne Canada

21 Canmotor Ave
Toronto, ON M8Z 4E6
Canada
Phone: 905.827.6400
Toll Free: 855.668.8722
Fax: 905.827.6402
canada.inquires@bio-techne.com

Bio-Techne Ltd

19 Barton Lane
Abingdon Science Park
Abingdon, OX14 3NB, United Kingdom
Phone: (44) (0) 1235 529449
Free Phone: 0800 37 34 15
Fax: (44) (0) 1235 533420
info.EMEA@bio-techne.com

General Contact Information

www.novusbio.com
Technical Support: nb-technical@bio-techne.com
Orders: nb-customerservice@bio-techne.com
General: novus@novusbio.com

Products Related to NB600-600MFV500

NBP1-78259PEP	GLI-1 Antibody Blocking Peptide
464-SH-025/CF	Sonic Hedgehog/Shh [Unconjugated]
NB600-600PEP	GLI-1 Antibody Blocking Peptide
AF3690	GLI-3 Antibody

Limitations

This product is for research use only and is not approved for use in humans or in clinical diagnosis. Primary Antibodies are guaranteed for 1 year from date of receipt.

For more information on our 100% guarantee, please visit www.novusbio.com/guarantee

Earn gift cards/discounts by submitting a review: www.novusbio.com/reviews/submit/NB600-600MFV500

Earn gift cards/discounts by submitting a publication using this product:
www.novusbio.com/publications

