

Product Datasheet

alpha Tubulin Antibody (YL1/2) [DyLight 488] NB600-506G

Unit Size: 0.1 ml

Store at 4C in the dark.

www.novusbio.com



technical@novusbio.com

Publications: 2

Protocols, Publications, Related Products, Reviews, Research Tools and Images at:
www.novusbio.com/NB600-506G

Updated 10/23/2024 v.20.1

Earn rewards for product
reviews and publications.

Submit a publication at www.novusbio.com/publications

Submit a review at www.novusbio.com/reviews/destination/NB600-506G



NB600-506G

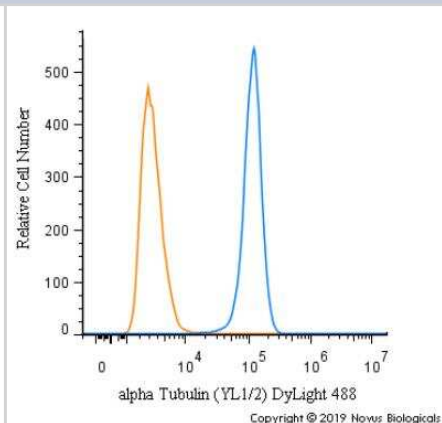
alpha Tubulin Antibody (YL1/2) [DyLight 488]

Product Information	
Unit Size	0.1 ml
Concentration	Please see the vial label for concentration. If unlisted please contact technical services.
Storage	Store at 4C in the dark.
Clonality	Monoclonal
Clone	YL1/2
Preservative	0.05% Sodium Azide
Isotype	IgG2a
Conjugate	DyLight 488
Purity	Protein G purified
Buffer	50mM Sodium Borate
Product Description	
Host	Rat
Gene ID	7846
Gene Symbol	TUBA1A
Species	Human, Mouse, Rat, Avian, C. elegans, Drosophila, Invertebrate, Mammal, Primate, Monkey, Yeast
Reactivity Notes	S. cerevisiae, S. pombe, Slime molds, Allium. Other species have not been tested. Expected to react with most eukaryotes due to sequence identity. Drosophila reactivity reported in scientific literature (PMID: 24019759). C. elegans reactivity reported in scientific literature (PMID: 29118344). Toxoplasma gondii reactivity reported by customer review.
Marker	Microtubule Marker
Immunogen	This alpha Tubulin Antibody (YL1/2) was developed against full length native protein (purified) (S. cerevisiae).
Notes	DyLight (R) is a trademark of Thermo Fisher Scientific Inc. and its subsidiaries.
Product Application Details	
Applications	Western Blot, ELISA, Flow Cytometry, Functional, Immunocytochemistry/ Immunofluorescence, Immunohistochemistry, Immunohistochemistry-Frozen, Immunohistochemistry-Paraffin, Immunoprecipitation, Radioimmunoassay
Recommended Dilutions	Western Blot, Flow Cytometry, ELISA, Immunohistochemistry, Immunocytochemistry/ Immunofluorescence, Immunoprecipitation, Immunohistochemistry-Paraffin, Immunohistochemistry-Frozen, Functional, Radioimmunoassay
Application Notes	Optimal dilution of this antibody should be experimentally determined.



Images

Flow Cytometry: alpha Tubulin Antibody (YL1/2) [DyLight 488] [NB600-506G] - An intracellular stain was performed on SH-SY5Y cells with alpha Tubulin (YL1/2) Antibody NB600-506G (blue) and a matched isotype control (orange). Cells were fixed with 4% PFA and then permeabilized with 0.1% saponin. Cells were incubated in an antibody dilution of 5 ug/mL for 30 minutes at room temperature. Both antibodies were conjugated to DyLight 488.



Publications

Courtney A, Alvey LM, Merces GOT et al. The Flexiscope: a low cost, flexible, convertible and modular microscope with automated scanning and micromanipulation R Soc Open Sci 2020-03-01 [PMID: 32269809]

Courtney A, Liegey J, Burke N Et al. Characterization of geometric variance in the epithelial nerve net of the ctenophore Pleurobrachia pileus J Comp Neurol 2021-12-21 [PMID: 34933399]

Details:

Citation using the DyLight 488 version of this antibody.



Novus Biologicals USA

10730 E. Briarwood Avenue
Centennial, CO 80112
USA
Phone: 303.730.1950
Toll Free: 1.888.506.6887
Fax: 303.730.1966
nb-customerservice@bio-techne.com

Bio-Techne Canada

21 Canmotor Ave
Toronto, ON M8Z 4E6
Canada
Phone: 905.827.6400
Toll Free: 855.668.8722
Fax: 905.827.6402
canada.inquires@bio-techne.com

Bio-Techne Ltd

19 Barton Lane
Abingdon Science Park
Abingdon, OX14 3NB, United Kingdom
Phone: (44) (0) 1235 529449
Free Phone: 0800 37 34 15
Fax: (44) (0) 1235 533420
info.EMEA@bio-techne.com

General Contact Information

www.novusbio.com
Technical Support: nb-technical@bio-techne.com
Orders: nb-customerservice@bio-techne.com
General: novus@novusbio.com

Products Related to NB600-506G

NB600-506F	alpha Tubulin Antibody (YL1/2) [FITC]
H00007846-Q01-10ug	Recombinant Human alpha Tubulin GST (N-Term) Protein
DPLG70	PLA2G7/PAF-AH/Lp-PLA2 [HRP]
NBL1-17427	alpha Tubulin Overexpression Lysate

Limitations

This product is for research use only and is not approved for use in humans or in clinical diagnosis. Primary Antibodies are guaranteed for 1 year from date of receipt.

For more information on our 100% guarantee, please visit www.novusbio.com/guarantee

Earn gift cards/discounts by submitting a review: www.novusbio.com/reviews/submit/NB600-506G

Earn gift cards/discounts by submitting a publication using this product:
www.novusbio.com/publications

