

Product Datasheet

alpha Tubulin Antibody (YL1/2) [Alexa Fluor® 488] NB600-506AF488

Unit Size: 0.1 ml

Store at 4C in the dark.

www.novusbio.com



technical@novusbio.com

Protocols, Publications, Related Products, Reviews, Research Tools and Images at:
www.novusbio.com/NB600-506AF488

Updated 10/23/2024 v.20.1

Earn rewards for product
reviews and publications.

Submit a publication at www.novusbio.com/publications

Submit a review at www.novusbio.com/reviews/destination/NB600-506AF488



NB600-506AF488

alpha Tubulin Antibody (YL1/2) [Alexa Fluor® 488]

Product Information	
Unit Size	0.1 ml
Concentration	Please see the vial label for concentration. If unlisted please contact technical services.
Storage	Store at 4C in the dark.
Clonality	Monoclonal
Clone	YL1/2
Preservative	0.05% Sodium Azide
Isotype	IgG2a
Conjugate	Alexa Fluor 488
Purity	Protein G purified
Buffer	50mM Sodium Borate

Product Description	
Host	Rat
Gene ID	7846
Gene Symbol	TUBA1A
Species	Human, Mouse, Rat, Avian, C. elegans, Drosophila, Invertebrate, Mammal, Monkey, Primate, Yeast
Reactivity Notes	S. cerevisiae, S. pombe, Slime molds, Allium. Other species have not been tested. Expected to react with most eukaryotes due to sequence identity. Drosophila reactivity reported in scientific literature (PMID: 24019759). C. elegans reactivity reported in scientific literature (PMID: 29118344). Toxoplasma gondii reactivity reported by customer review.
Marker	Microtubule Marker
Immunogen	This alpha Tubulin Antibody (YL1/2) was developed against full length native protein (purified) (S. cerevisiae).
Notes	Alexa Fluor (R) products are provided under an intellectual property license from Life Technologies Corporation. The purchase of this product conveys to the buyer the non-transferable right to use the purchased product and components of the product only in research conducted by the buyer (whether the buyer is an academic or for-profit entity). The sale of this product is expressly conditioned on the buyer not using the product or its components, or any materials made using the product or its components, in any activity to generate revenue, which may include, but is not limited to use of the product or its components: (i) in manufacturing; (ii) to provide a service, information, or data in return for payment; (iii) for therapeutic, diagnostic or prophylactic purposes; or (iv) for resale, regardless of whether they are resold for use in research. For information on purchasing a license to this product for purposes other than as described above, contact Life Technologies Corporation, 5791 Van Allen Way, Carlsbad, CA 92008 USA or outlicensing@lifetech.com . This conjugate is made on demand. Actual recovery may vary from the stated volume of this product. The volume will be greater than or equal to the unit size stated on the datasheet.

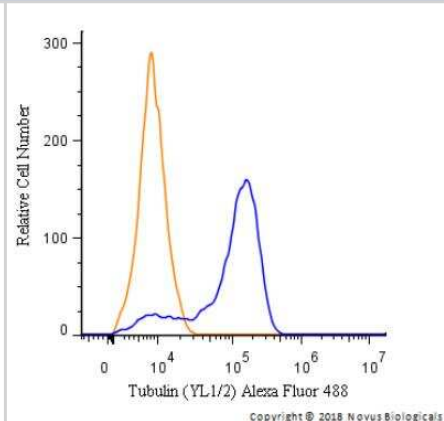
Product Application Details	
Applications	Western Blot, ELISA, Flow Cytometry, Functional, Immunocytochemistry/Immunofluorescence, Immunohistochemistry, Immunohistochemistry-Frozen, Immunohistochemistry-Paraffin, Immunoprecipitation, Radioimmunoassay



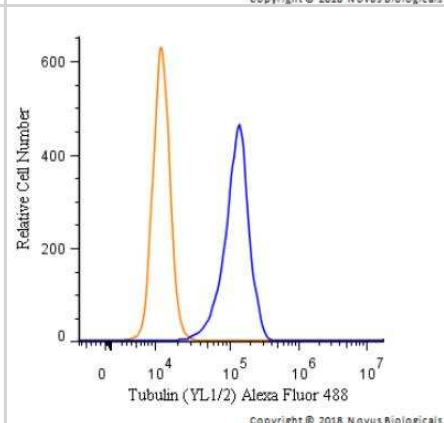
Recommended Dilutions	Western Blot, Flow Cytometry, ELISA, Immunohistochemistry, Immunocytochemistry/ Immunofluorescence, Immunoprecipitation, Immunohistochemistry-Paraffin, Immunohistochemistry-Frozen, Functional, Radioimmunoassay
Application Notes	Optimal dilution of this antibody should be experimentally determined.

Images

Flow Cytometry: Tubulin Antibody (YL1/2) [Alexa Fluor® 488] [NB600-506AF488] - An intracellular stain was performed on PC12 cells with Tubulin [YL1/2] Antibody NB600-506AF488 (blue) and a matched isotype control (orange). Cells were fixed with 4% PFA and then permeabilized with 0.1% saponin. Cells were incubated in an antibody dilution of 5 ug/mL for 30 minutes at room temperature. Both antibodies were conjugated to Alexa Fluor 488.



Flow Cytometry: Tubulin Antibody (YL1/2) [Alexa Fluor® 488] [NB600-506AF488] - An intracellular stain was performed on NIH3T3 cells with Tubulin [YL1/2] Antibody NB600-506AF488 (blue) and a matched isotype control (orange). Cells were fixed with 4% PFA and then permeabilized with 0.1% saponin. Cells were incubated in an antibody dilution of 5 ug/mL for 30 minutes at room temperature. Both antibodies were conjugated to Alexa Fluor 488.



**Novus Biologicals USA**

10730 E. Briarwood Avenue
Centennial, CO 80112
USA
Phone: 303.730.1950
Toll Free: 1.888.506.6887
Fax: 303.730.1966
nb-customerservice@bio-techne.com

Bio-Techne Canada

21 Canmotor Ave
Toronto, ON M8Z 4E6
Canada
Phone: 905.827.6400
Toll Free: 855.668.8722
Fax: 905.827.6402
canada.inquires@bio-techne.com

Bio-Techne Ltd

19 Barton Lane
Abingdon Science Park
Abingdon, OX14 3NB, United Kingdom
Phone: (44) (0) 1235 529449
Free Phone: 0800 37 34 15
Fax: (44) (0) 1235 533420
info.EMEA@bio-techne.com

General Contact Information

www.novusbio.com
Technical Support: nb-technical@bio-techne.com
Orders: nb-customerservice@bio-techne.com
General: novus@novusbio.com

Products Related to NB600-506AF488

IC006G	Rat IgG2a Isotype Control (54447) [Alexa Fluor® 488]
NB600-506AF647	alpha Tubulin Antibody (YL1/2) [Alexa Fluor® 647]
H00007846-Q01-10ug	Recombinant Human alpha Tubulin GST (N-Term) Protein
DPLG70	PLA2G7/PAF-AH/Lp-PLA2 [HRP]

Limitations

This product is for research use only and is not approved for use in humans or in clinical diagnosis. Primary Antibodies are guaranteed for 1 year from date of receipt.

For more information on our 100% guarantee, please visit www.novusbio.com/guarantee

Earn gift cards/discounts by submitting a review: www.novusbio.com/reviews/submit/NB600-506AF488

Earn gift cards/discounts by submitting a publication using this product:
www.novusbio.com/publications

