

Product Datasheet

Ubiquitin-activating Enzyme/UBE1 Antibody - BSA Free NB600-472

Unit Size: 0.25 mg

Store at -20C. Avoid freeze-thaw cycles.

www.novusbio.com



technical@novusbio.com

Publications: 1

Protocols, Publications, Related Products, Reviews, Research Tools and Images at:
www.novusbio.com/NB600-472

Updated 2/21/2025 v.20.1

Earn rewards for product
reviews and publications.

Submit a publication at www.novusbio.com/publications

Submit a review at www.novusbio.com/reviews/destination/NB600-472



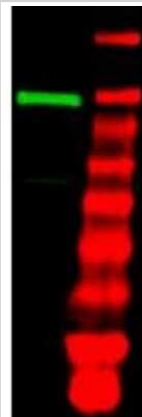
NB600-472**Ubiquitin-activating Enzyme/UBE1 Antibody - BSA Free**

Product Information	
Unit Size	0.25 mg
Concentration	Please see the vial label for concentration. If unlisted please contact technical services.
Storage	Store at -20C. Avoid freeze-thaw cycles.
Clonality	Polyclonal
Preservative	0.01% Sodium Azide
Isotype	IgG
Purity	Protein A purified
Buffer	0.02 M Potassium Phosphate, 0.15 M Sodium Chloride, pH 7.2
Product Description	
Description	<p>The product was protein A purified from monospecific antiserum followed by further purification to remove the GST tag</p> <p>Store vial at 4C prior to restoration. For extended storage aliquot contents and freeze at -20C or below. Avoid cycles of freezing and thawing. Centrifuge product if not completely clear after standing at room temperature. This product is stable for several weeks at 4C as an undiluted liquid. Dilute only prior to immediate use.</p>
Host	Rabbit
Gene ID	7317
Gene Symbol	UBA1
Species	Human
Reactivity Notes	A BLAST analysis was used to suggest that this antibody would react with Ubiquitin-activating Enzyme/UBE1 protein from human (100%) rabbit (96%), mouse (95%), rat (95%) and dog (93%) based on a high degree of sequence homology. Cross reactivity against this protein from other sources has not been determined.
Immunogen	Ubiquitin-activating Enzyme/UBE1 antibody was prepared from whole rabbit serum produced by repeated immunizations with a recombinant protein corresponding to full length Human Ubiquitin-activating Enzyme/UBE1. (Uniprot: P22314)
Product Application Details	
Applications	Western Blot, ELISA, Immunohistochemistry, Immunohistochemistry-Paraffin
Recommended Dilutions	Western Blot 1:1000-1:5000, ELISA 1:2000-1:10000, Immunohistochemistry 2 mg/ml-20 ug/ml, Immunohistochemistry-Paraffin 1:10-1:500
Application Notes	This purified antibody has been tested for use in ELISA, immunohistochemistry and western blot. Specific conditions for reactivity should be optimized by the end user. Expect a band at ~118 kDa in size corresponding to UBE1 by western blotting in the appropriate cell lysate or extract.



Images

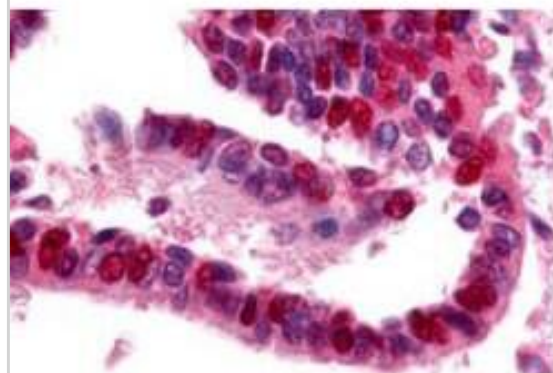
Western Blot: Ubiquitin-activating Enzyme/UBE1 Antibody [NB600-472] - Shows detection of a band at ~118 kDa corresponding to UBE1 (lane 1 800 nm channel). Approximately 35 ug of an A431 whole cell lysate was separated on a 4-20% Tris-Glycine gel by SDS-PAGE and transferred onto nitrocellulose. After blocking the membrane was probed with the primary antibody diluted to 1:1,000. Incubation was for 2 h at room temperature followed by washes and reaction with a 1:10,000 dilution of IRDye (TM) 800 conjugated Gt-a-Rabbit IgG [H&L] MX10 for 45 min at room temperature. Molecular weight markers are shown in lane 2 (700 nm channel).



Immunohistochemistry: Ubiquitin-activating Enzyme/UBE1 Antibody [NB600-472] - Used at a 10 ug/ml to detect UBE1 in a variety of tissues including adrenal, breast, colon (epithelium), kidney, liver, lung (respiratory epithelium), ovary (oocyte and endothelium), pancreas (islet and exocrine), placenta, prostate (epithelium), skin (epithelium), spleen (lymphocytes), stomach (chief), testis, thymus, tonsil, and uterus (glandular, stroma). In many cells a punctate nuclear staining was observed. Other cells showed both cytoplasmic and nuclear staining. This image shows UBE1 staining of human lung tissue. Tissue was formalin-fixed and paraffin embedded. Personal Communication, Tina Roush, LifeSpanBiosciences, Seattle, WA.



Affinity Purified anti-Ubiquitin Activating Enzyme antibody was used at a 10 ug/ml to detect UBE1 in a variety of tissues including adrenal, breast, colon (epithelium), kidney, liver, lung (respiratory epithelium), ovary (oocyte and endothelium), pancreas (islet and exocrine), placenta, prostate (epithelium), skin (epithelium), spleen (lymphocytes), stomach (chief), testis, thymus, tonsil, and uterus (glandular, stroma). In many cells a punctate nuclear staining was observed. Other cells showed both cytoplasmic and nuclear staining. This image shows UBE1 staining of human lung tissue. Tissue was formalin-fixed and paraffin embedded. Personal Communication, Tina Roush, LifeSpan Biosciences, Seattle, WA.



Publications

Panigrahi AK, Zhang N, Otta SK, Pati D. A cohesin-RAD21 interactome. Biochem J 2012-03-15 [PMID: 22145905] (Human)



Novus Biologicals USA

10730 E. Briarwood Avenue
Centennial, CO 80112
USA
Phone: 303.730.1950
Toll Free: 1.888.506.6887
Fax: 303.730.1966
nb-customerservice@bio-techne.com

Bio-Techne Canada

21 Canmotor Ave
Toronto, ON M8Z 4E6
Canada
Phone: 905.827.6400
Toll Free: 855.668.8722
Fax: 905.827.6402
canada.inquires@bio-techne.com

Bio-Techne Ltd

19 Barton Lane
Abingdon Science Park
Abingdon, OX14 3NB, United Kingdom
Phone: (44) (0) 1235 529449
Free Phone: 0800 37 34 15
Fax: (44) (0) 1235 533420
info.EMEA@bio-techne.com

General Contact Information

www.novusbio.com
Technical Support: nb-technical@bio-techne.com
Orders: nb-customerservice@bio-techne.com
General: novus@novusbio.com

Products Related to NB600-472

NBL1-17494	Ubiquitin-activating Enzyme/UBE1 Overexpression Lysate
HAF008	Goat anti-Rabbit IgG Secondary Antibody [HRP]
NB7160	Goat anti-Rabbit IgG (H+L) Secondary Antibody [HRP]
NBP2-24891	Rabbit IgG Isotype Control

Limitations

This product is for research use only and is not approved for use in humans or in clinical diagnosis. Primary Antibodies are guaranteed for 1 year from date of receipt.

For more information on our 100% guarantee, please visit www.novusbio.com/guarantee

Earn gift cards/discounts by submitting a review: www.novusbio.com/reviews/submit/NB600-472

Earn gift cards/discounts by submitting a publication using this product:
www.novusbio.com/publications

