

Product Datasheet

Collagen I Antibody [Janelia Fluor® 635] NB600-408JF635

Unit Size: 0.1 ml

Store at 4C in the dark.

www.novusbio.com



technical@novusbio.com

Protocols, Publications, Related Products, Reviews, Research Tools and Images at:
www.novusbio.com/NB600-408JF635

Updated 12/12/2024 v.20.1

Earn rewards for product
reviews and publications.

Submit a publication at www.novusbio.com/publications

Submit a review at www.novusbio.com/reviews/destination/NB600-408JF635



NB600-408JF635

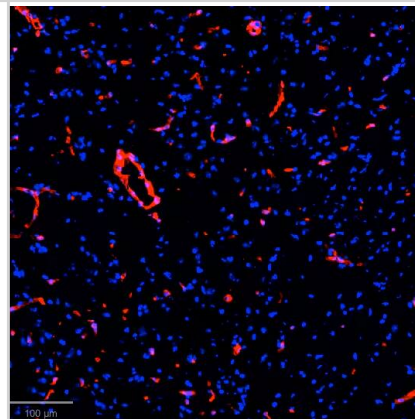
Collagen I Antibody [Janelia Fluor® 635]

Product Information	
Unit Size	0.1 ml
Concentration	Please see the vial label for concentration. If unlisted please contact technical services.
Storage	Store at 4C in the dark.
Clonality	Polyclonal
Preservative	0.05% Sodium Azide
Isotype	IgG
Conjugate	Janelia Fluor 635
Purity	Immunogen affinity purified
Buffer	50mM Sodium Borate
Product Description	
Host	Rabbit
Gene ID	1277
Gene Symbol	COL1A1
Species	Human, Mouse, Rat, Porcine, Bovine, Rabbit
Reactivity Notes	This antibody reacts with human, bovine, and most mammalian Type I collagens with negligible cross-reactivity with Type II, III, IV, V or VI collagens Use in Mouse reported in scientific literature (PMID: 33758176).
Specificity/Sensitivity	Some class-specific anti-collagens may be specific for three-dimensional epitopes which may result in diminished reactivity with denatured collagen or formalin-fixed, paraffin embedded tissues. This antibody reacts with most mammalian Type I collagens and has expected cross-reactivity with Type III and negligible cross reactivity with Type II, IV, V or VI collagens. Non-specific cross-reaction of anti-collagen antibodies with other human serum proteins or non-collagen extracellular matrix proteins has not been tested.
Immunogen	Collagen I from human and bovine placenta (Uniprot: P02452)
Notes	Sold under license from the Howard Hughes Medical Institute, Janelia Research Campus.
Product Application Details	
Applications	Western Blot, ELISA, Fluorophore-linked immunosorbent assay, Immunocytochemistry/ Immunofluorescence, Immunohistochemistry, Immunohistochemistry-Frozen, Immunohistochemistry-Paraffin, Immunoprecipitation, Microarray, SDS-Page, Knockdown Validated
Recommended Dilutions	Western Blot, ELISA, Immunohistochemistry, Immunocytochemistry/ Immunofluorescence, Immunoprecipitation, Immunohistochemistry-Paraffin, Immunohistochemistry-Frozen, SDS-Page, Fluorophore-linked immunosorbent assay, Microarray, Knockdown Validated
Application Notes	Optimal dilution of this antibody should be experimentally determined.



Images

Immunohistochemistry-Frozen: Collagen I Antibody [Janelia Fluor® 635] [NB600-408JF635] - Cryopreserved murine brain tissue stained with Collagen I Antibody [Alexa Fluor® 647] (Catalog # NB600-408AF647) (red) and Hoechst (blue). Image from a verified customer review.





Novus Biologicals USA

10730 E. Briarwood Avenue
Centennial, CO 80112
USA
Phone: 303.730.1950
Toll Free: 1.888.506.6887
Fax: 303.730.1966
nb-customerservice@bio-techne.com

Bio-Techne Canada

21 Canmotor Ave
Toronto, ON M8Z 4E6
Canada
Phone: 905.827.6400
Toll Free: 855.668.8722
Fax: 905.827.6402
canada.inquires@bio-techne.com

Bio-Techne Ltd

19 Barton Lane
Abingdon Science Park
Abingdon, OX14 3NB, United Kingdom
Phone: (44) (0) 1235 529449
Free Phone: 0800 37 34 15
Fax: (44) (0) 1235 533420
info.EMEA@bio-techne.com

General Contact Information

www.novusbio.com
Technical Support: nb-technical@bio-techne.com
Orders: nb-customerservice@bio-techne.com
General: novus@novusbio.com

Limitations

This product is for research use only and is not approved for use in humans or in clinical diagnosis. Primary Antibodies are guaranteed for 1 year from date of receipt.

For more information on our 100% guarantee, please visit www.novusbio.com/guarantee

Earn gift cards/discounts by submitting a review: www.novusbio.com/reviews/submit/NB600-408JF635

Earn gift cards/discounts by submitting a publication using this product:
www.novusbio.com/publications

