

Product Datasheet

WSTF Antibody NB600-279

Unit Size: 0.1 ml

Store at 4C. Do not freeze.

www.novusbio.com



technical@novusbio.com

Publications: 3

Protocols, Publications, Related Products, Reviews, Research Tools and Images at:
www.novusbio.com/NB600-279

Updated 10/23/2024 v.20.1

Earn rewards for product
reviews and publications.

Submit a publication at www.novusbio.com/publications

Submit a review at www.novusbio.com/reviews/destination/NB600-279



NB600-279

WSTF Antibody

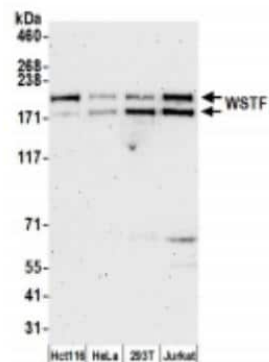
Product Information	
Unit Size	0.1 ml
Concentration	0.2 mg/ml
Storage	Store at 4C. Do not freeze.
Clonality	Polyclonal
Preservative	0.09% Sodium Azide
Isotype	IgG
Purity	Immunogen affinity purified
Buffer	TBS and 0.1% BSA

Product Description	
Host	Rabbit
Gene ID	9031
Gene Symbol	BAZ1B
Species	Human
Immunogen	The immunogen recognized by this antibody maps to a region between residues 1 and 50 of human Williams Syndrome Transcription Factor using the numbering given in SwissProt entry Q9UIG0 (GeneID 9031).

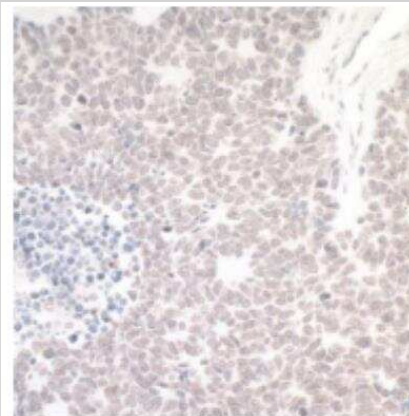
Product Application Details	
Applications	Western Blot, Immunohistochemistry, Immunohistochemistry-Paraffin, Immunoprecipitation
Recommended Dilutions	Western Blot 1:2000 - 1:10000, Immunohistochemistry 1:100 -1:500, Immunoprecipitation 2-5 ug/mg lysate, Immunohistochemistry-Paraffin 1:100 - 1:500
Application Notes	Epitope retrieval with Tris-EDTA pH9.0 is recommended for FFPE tissue sections.

Images

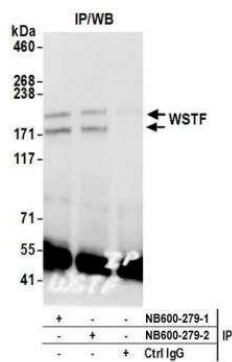
Western Blot: WSTF Antibody [NB600-279] - Whole cell lysate (50 ug) from HCT116, HeLa, 293T, and Jurkat cells prepared using NETN lysis buffer. Antibody: Affinity purified rabbit anti-WSTF antibody used for WB at 0.1 ug/ml. Detection: Chemiluminescence with an exposure time of 3 minutes



Immunohistochemistry-Paraffin: WSTF Antibody [NB600-279] - FFPE section of human small cell lung cancer. Antibody: Affinity purified rabbit anti-WSTF used at a dilution of 1:200 (1ug/ml). Detection: DAB



Immunoprecipitation: WSTF Antibody [NB600-279] - Detection of human WSTF by western blot of immunoprecipitates. Samples: Whole cell lysate (1.0 mg per IP reaction; 20% of IP loaded) from HeLa cells prepared using NETN lysis buffer. Antibodies: Affinity purified rabbit anti-WSTF antibody NB600-279 (lot NB600-279-2) used for IP at 3 ug per reaction. WSTF was also immunoprecipitated by a previous lot of this antibody (lot NB600-279-1). For blotting immunoprecipitated WSTF, NB600-279 was used at 1 ug/ml. Detection: Chemiluminescence with an exposure time of 3 minutes.



Publications

Oppikofer M, Bai T, et al. Expansion of the ISWI chromatin remodeler family with new active complexes. *EMBO Rep* 2017-10-01 [PMID: 28801535] (WB, Human)

Oppikofer M, Sagolla M, et al. Non-canonical reader modules of BAZ1A promote recovery from DNA damage. *Nat Commun* 2017-10-11 [PMID: 29021563] (WB, Human)

Sirbu BM, McDonald WH, Dungrawala H et al. Identification of Proteins at Active, Stalled, and Collapsed Replication Forks Using Isolation of Proteins on Nascent DNA (iPOND) Coupled with Mass Spectrometry. *J Biol Chem*. 2013-11-01 [PMID: 24047897] (WB, Human)



Novus Biologicals USA

10730 E. Briarwood Avenue
Centennial, CO 80112
USA
Phone: 303.730.1950
Toll Free: 1.888.506.6887
Fax: 303.730.1966
nb-customerservice@bio-techne.com

Bio-Techne Canada

21 Canmotor Ave
Toronto, ON M8Z 4E6
Canada
Phone: 905.827.6400
Toll Free: 855.668.8722
Fax: 905.827.6402
canada.inquires@bio-techne.com

Bio-Techne Ltd

19 Barton Lane
Abingdon Science Park
Abingdon, OX14 3NB, United Kingdom
Phone: (44) (0) 1235 529449
Free Phone: 0800 37 34 15
Fax: (44) (0) 1235 533420
info.EMEA@bio-techne.com

General Contact Information

www.novusbio.com
Technical Support: nb-technical@bio-techne.com
Orders: nb-customerservice@bio-techne.com
General: novus@novusbio.com

Products Related to NB600-279

HAF008	Goat anti-Rabbit IgG Secondary Antibody [HRP]
NB7160	Goat anti-Rabbit IgG (H+L) Secondary Antibody [HRP]
NBP2-24891	Rabbit IgG Isotype Control
NBP2-57741PEP	WSTF Recombinant Protein Antigen

Limitations

This product is for research use only and is not approved for use in humans or in clinical diagnosis. Primary Antibodies are guaranteed for 1 year from date of receipt.

For more information on our 100% guarantee, please visit www.novusbio.com/guarantee

Earn gift cards/discounts by submitting a review: www.novusbio.com/reviews/submit/NB600-279

Earn gift cards/discounts by submitting a publication using this product:
www.novusbio.com/publications

