

Product Datasheet

BCL11B Antibody - BSA Free

NB600-264

Unit Size: 100 ul

Store at 4C. Do not freeze.

www.novusbio.com



technical@novusbio.com

Publications: 1

Protocols, Publications, Related Products, Reviews, Research Tools and Images at:
www.novusbio.com/NB600-264

Updated 2/21/2025 v.20.1

Earn rewards for product
reviews and publications.

Submit a publication at www.novusbio.com/publications

Submit a review at www.novusbio.com/reviews/destination/NB600-264



NB600-264

BCL11B Antibody - BSA Free

Product Information	
Unit Size	100 ul
Concentration	1.0 mg/ml
Storage	Store at 4C. Do not freeze.
Clonality	Polyclonal
Preservative	0.09% Sodium Azide
Isotype	IgG
Purity	Immunogen affinity purified
Buffer	Tris-Citrate/Phosphate (pH 7.0 - 8.0)

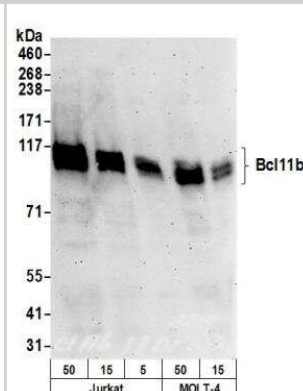
Product Description	
Host	Rabbit
Gene ID	64919
Gene Symbol	BCL11B
Species	Human
Immunogen	A synthetic peptide which maps to a region between residues 850 and the C-terminus (residue 894) of human B-cell CLL/lymphoma 11B using the numbering given in Swiss-Prot entry Q9C0K0 (GeneID 64919).

Product Application Details	
Applications	Western Blot, Immunohistochemistry, Immunohistochemistry-Paraffin, Immunoprecipitation
Recommended Dilutions	Western Blot 1:2000-1:0000, Immunohistochemistry 1:500-1:2000, Immunoprecipitation 2-10 ug/mg lysate, Immunohistochemistry-Paraffin 1:500-1:2000
Application Notes	Epitope retrieval with citrate buffer pH 6.0 is recommended for FFPE tissue sections

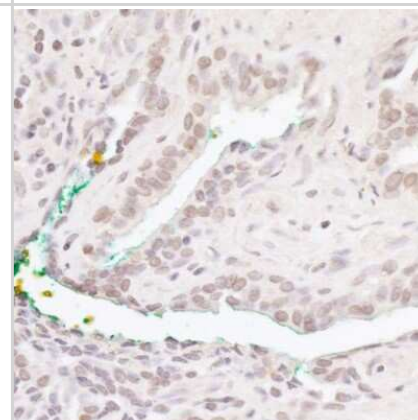


Images

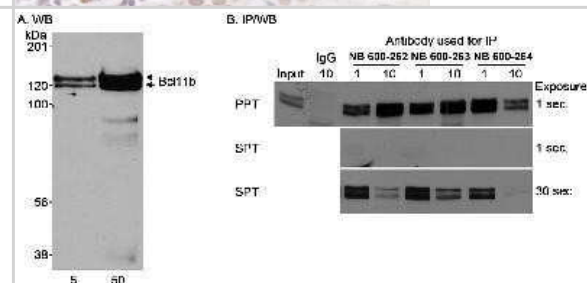
Western Blot: BCL11B Antibody [NB600-264] - Detection of Human Bcl11b by Western Blot. Samples: Whole cell lysate (50, 15, 5 ug) from Jurkat and (50, 15 ug) MOLT-4 cells prepared using NETN lysis buffer. Antibodies: Affinity purified rabbit anti-Bcl11b antibody NB600-264 used for WB at 0.1 ug/ml. Detection: Chemiluminescence with an exposure time of 3 minutes.



Immunohistochemistry: BCL11B Antibody [NB600-264] - Detection of human Bcl11b by immunohistochemistry. Sample: FFPE section of human prostate carcinoma. Antibody: Affinity purified rabbit anti-Bcl11b (NB600-264). Detection: DAB



Immunoprecipitation: BCL11B Antibody [NB600-264] - Detection of Human Bcl11b on HeLa whole cell lysate using NB600-264. Bcl11b was also immunoprecipitated using affinity purified rabbit anti-Bcl11b antibodies NB600-262 and NB600-263.



Publications

Matsumoto Yosuke, Nagoshi Hisao, Yoshida Mihoko et al. Expression of Master Regulators of T-cell, Helper T-cell and Follicular Helper T-cell Differentiation in Angioimmunoblastic T-cell Lymphoma. Internal Medicine (Tokyo, Japan) 2017-01-01 [PMID: 28943543] (IF/IHC, Human)



Novus Biologicals USA

10730 E. Briarwood Avenue
Centennial, CO 80112
USA
Phone: 303.730.1950
Toll Free: 1.888.506.6887
Fax: 303.730.1966
nb-customerservice@bio-techne.com

Bio-Techne Canada

21 Canmotor Ave
Toronto, ON M8Z 4E6
Canada
Phone: 905.827.6400
Toll Free: 855.668.8722
Fax: 905.827.6402
canada.inquires@bio-techne.com

Bio-Techne Ltd

19 Barton Lane
Abingdon Science Park
Abingdon, OX14 3NB, United Kingdom
Phone: (44) (0) 1235 529449
Free Phone: 0800 37 34 15
Fax: (44) (0) 1235 533420
info.EMEA@bio-techne.com

General Contact Information

www.novusbio.com
Technical Support: nb-technical@bio-techne.com
Orders: nb-customerservice@bio-techne.com
General: novus@novusbio.com

Products Related to NB600-264

HAF008	Goat anti-Rabbit IgG Secondary Antibody [HRP]
NB7160	Goat anti-Rabbit IgG (H+L) Secondary Antibody [HRP]
NBP2-24891	Rabbit IgG Isotype Control
NBP2-33549PEP	BCL11B Recombinant Protein Antigen

Limitations

This product is for research use only and is not approved for use in humans or in clinical diagnosis. Primary Antibodies are guaranteed for 1 year from date of receipt.

For more information on our 100% guarantee, please visit www.novusbio.com/guarantee

Earn gift cards/discounts by submitting a review: www.novusbio.com/reviews/submit/NB600-264

Earn gift cards/discounts by submitting a publication using this product:
www.novusbio.com/publications

