

Product Datasheet

SP1 Antibody - BSA Free NB600-233

Unit Size: 100 ul

Store at 4C. Do not freeze.

www.novusbio.com



technical@novusbio.com

Publications: 6

Protocols, Publications, Related Products, Reviews, Research Tools and Images at:
www.novusbio.com/NB600-233

Updated 2/21/2025 v.20.1

Earn rewards for product
reviews and publications.

Submit a publication at www.novusbio.com/publications

Submit a review at www.novusbio.com/reviews/destination/NB600-233



NB600-233

SP1 Antibody - BSA Free

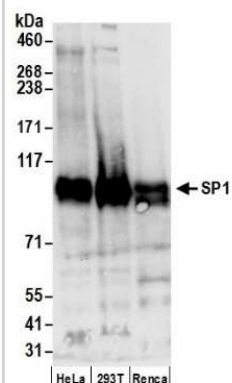
Product Information	
Unit Size	100 ul
Concentration	1.0 mg/ml
Storage	Store at 4C. Do not freeze.
Clonality	Polyclonal
Preservative	0.09% Sodium Azide
Isotype	IgG
Purity	Immunogen affinity purified
Buffer	Tris-Citrate/Phosphate (pH 7.0 - 8.0)

Product Description	
Description	This antibody can be used as the primary antibody in a PLA assay with the following as complementing antibodies: NB100-55324, NB100-224, NB200-171, NB500-160, NB200-347
Host	Rabbit
Gene ID	6667
Gene Symbol	SP1
Species	Human, Mouse
Immunogen	The immunogen recognized by this antibody maps to a region between residue 750 and the C-terminus (residue 785) using the numbering given in entry XP_028606.4 (GeneID 6667).
Notes	This antibody can be used as the primary antibody in a PLA assay with the following as complementing antibodies: NB100-55324, NB100-224, NB200-171, NB500-160, NB200-347

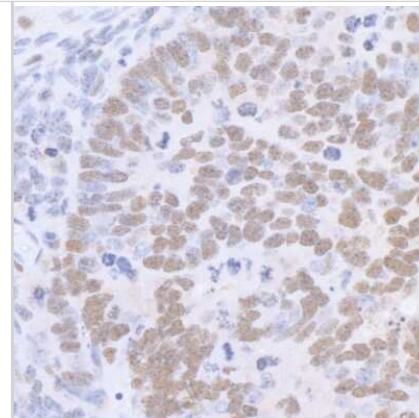
Product Application Details	
Applications	Western Blot, Immunohistochemistry, Immunohistochemistry-Paraffin, Immunoprecipitation, Chromatin Immunoprecipitation (ChIP), Chromatin Immunoprecipitation Sequencing
Recommended Dilutions	Western Blot 1:2000 - 1:10000, Immunohistochemistry 1:2000 - 1:10000, Immunoprecipitation 2-10 ug/mg lysate, Immunohistochemistry-Paraffin 1:2000 - 1:10000, Chromatin Immunoprecipitation (ChIP) 4 ug/30 ug lysate, Chromatin Immunoprecipitation Sequencing

Images

Western Blot: SP1 Antibody [NB600-233] - Samples: Whole cell lysate (50 ug) from HeLa, 293T, and mouse Renca cells prepared using NETN lysis buffer. Antibody: Affinity purified rabbit anti-SP1 antibody used for WB at 0.1 ug/ml. Detection: Chemiluminescence with an exposure time of 10 seconds.



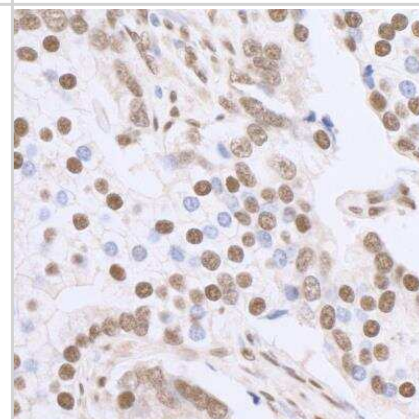
Immunohistochemistry-Paraffin: SP1 Antibody [NB600-233] - Mouse renal cell carcinoma. Antibody: Affinity purified rabbit anti-SP1 used at a dilution of 1:5,000 (0.2ug/ml). Detection: DAB



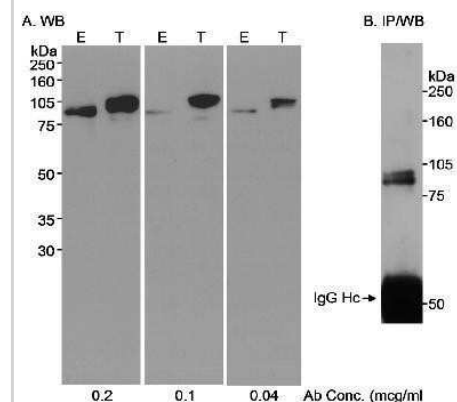
Chromatin Immunoprecipitation: SP1 Antibody [NB600-233] - Chromatin from acute myeloid leukemia cell line was immunoprecipitated with anti-Sp1 antibody and analyzed by DNA sequencing. The figure illustrates the peak distribution of Sp1 binding within a 250 Kb region of chromosome 6 as detected using anti-Sp1.



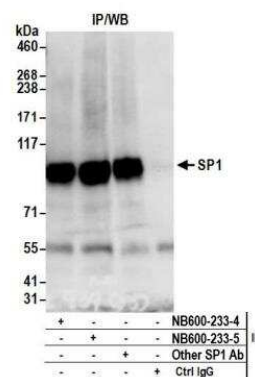
Immunohistochemistry-Paraffin: SP1 Antibody [NB600-233] - Human breast carcinoma. Antibody: Affinity purified rabbit anti-SP1 used at a dilution of 1:5,000 (0.2ug/ml). Detection: DAB



Immunoprecipitation: SP1 Antibody [NB600-233] - Detection of Human SP1 on HeLa whole cell lysate using NB600-233. SP1 was immunoprecipitated using affinity purified rabbit anti-SP1 antibody NB600-233. NB600-233 was used at 0.04 mcg/ml for WB.



Immunoprecipitation: SP1 Antibody [NB600-233] - Detection of human SP1 by western blot of immunoprecipitates. Samples: Whole cell lysate (0.5 or 1.0 mg per IP reaction; 20% of IP loaded) from HeLa cells prepared using NETN lysis buffer. Antibodies: Affinity purified rabbit anti-SP1 antibody NB600-233 (lot NB600-233-5) used for IP at 6 ug per reaction. SP1 was also immunoprecipitated by a previous lot of this antibody (NB600-233-4) and another rabbit anti-SP1 antibody. For blotting immunoprecipitated SP1, NB600-233 was used at 1 ug/ml. Detection: Chemiluminescence with an exposure time of 10 seconds.



Publications

Kim, WK;Buckley, AJ;Lee, DH;Hiroto, A;Nenninger, CH;Olson, AW;Wang, J;Li, Z;Vikram, R;Adzavon, YM;Yau, TY;Bao, Y;Kahn, M;Geradts, J;Xiao, GQ;Sun, Z; Androgen deprivation induces double-null prostate cancer via aberrant nuclear export and ribosomal biogenesis through HGF and Wnt activation Nature communications 2024-02-09 [PMID: 38336745]

Hiroto A, Kim WK, Pineda A et al. Stromal androgen signaling acts as tumor niches to drive prostatic basal epithelial progenitor-initiated oncogenesis Nature communications 2022-11-02 [PMID: 36323713] (Chemotaxis, Mouse)

Zhang P, Liu Y, Su J et al. Resistin impairs activation of protein C by suppressing EPCR and increasing SP1 expression. Biomedicine & Pharmacotherapy. 1905-07-11 [PMID: 30551547] (WB, Human)

Elkind E, Vaisid T, Kornspan JD et al. Calpastatin upregulation in Mycoplasma hyorhinis-infected cells is promoted by the mycoplasma lipoproteins via the NF- κ B pathway. Cell Microbiol 2012-06-01 [PMID: 22288381]

Ma W, Horvath GC, Kistler MK et al. Expression patterns of SP1 and SP3 during mouse spermatogenesis: SP1 down-regulation correlates with two successive promoter changes and translationally compromised transcripts. Biol Reprod 2008-08-01 [PMID: 18417714]

Lay, J et al. Sulfasalazine Suppresses Drug Resistance Invasiveness of Lung Adenocarcinoma Cells Expressing AXL. Cancer Res67: 3878-3887. 2007-01-01 [PMID: 17440102]



Novus Biologicals USA

10730 E. Briarwood Avenue
Centennial, CO 80112
USA
Phone: 303.730.1950
Toll Free: 1.888.506.6887
Fax: 303.730.1966
nb-customerservice@bio-techne.com

Bio-Techne Canada

21 Canmotor Ave
Toronto, ON M8Z 4E6
Canada
Phone: 905.827.6400
Toll Free: 855.668.8722
Fax: 905.827.6402
canada.inquires@bio-techne.com

Bio-Techne Ltd

19 Barton Lane
Abingdon Science Park
Abingdon, OX14 3NB, United Kingdom
Phone: (44) (0) 1235 529449
Free Phone: 0800 37 34 15
Fax: (44) (0) 1235 533420
info.EMEA@bio-techne.com

General Contact Information

www.novusbio.com
Technical Support: nb-technical@bio-techne.com
Orders: nb-customerservice@bio-techne.com
General: novus@novusbio.com

Products Related to NB600-233

HAF008	Goat anti-Rabbit IgG Secondary Antibody [HRP]
NB7160	Goat anti-Rabbit IgG (H+L) Secondary Antibody [HRP]
NBP2-24891	Rabbit IgG Isotype Control
H00006667-Q01-10ug	Recombinant Human SP1 GST (N-Term) Protein

Limitations

This product is for research use only and is not approved for use in humans or in clinical diagnosis. Primary Antibodies are guaranteed for 1 year from date of receipt.

For more information on our 100% guarantee, please visit www.novusbio.com/guarantee

Earn gift cards/discounts by submitting a review: www.novusbio.com/reviews/submit/NB600-233

Earn gift cards/discounts by submitting a publication using this product:
www.novusbio.com/publications

