

# Product Datasheet

## DIAPH1 Antibody - BSA Free NB600-231

Unit Size: 100 ul

Store at 4C. Do not freeze.

[www.novusbio.com](http://www.novusbio.com)



[technical@novusbio.com](mailto:technical@novusbio.com)

### Publications: 2

Protocols, Publications, Related Products, Reviews, Research Tools and Images at:  
[www.novusbio.com/NB600-231](http://www.novusbio.com/NB600-231)

Updated 2/21/2025 v.20.1

Earn rewards for product  
reviews and publications.

Submit a publication at [www.novusbio.com/publications](http://www.novusbio.com/publications)

Submit a review at [www.novusbio.com/reviews/destination/NB600-231](http://www.novusbio.com/reviews/destination/NB600-231)



**NB600-231**

DIAPH1 Antibody - BSA Free

<b>Product Information</b>	
<b>Unit Size</b>	100 ul
<b>Concentration</b>	1.0 mg/ml
<b>Storage</b>	Store at 4C. Do not freeze.
<b>Clonality</b>	Polyclonal
<b>Preservative</b>	0.09% Sodium Azide
<b>Isotype</b>	IgG
<b>Purity</b>	Immunogen affinity purified
<b>Buffer</b>	Tris-Citrate/Phosphate (pH 7.0 - 8.0)

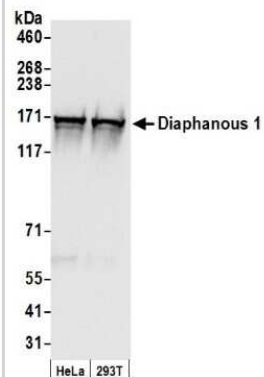
<b>Product Description</b>	
<b>Host</b>	Rabbit
<b>Gene ID</b>	1729
<b>Gene Symbol</b>	DIAPH1
<b>Species</b>	Human
<b>Immunogen</b>	The immunogen recognized by this antibody maps to a region between residues 1200 and the C-terminus (residue 1248) of human Diaphanous Homolog 1 using the numbering given in entry NP_005210.1 (GeneID 1729).

<b>Product Application Details</b>	
<b>Applications</b>	Western Blot, Immunohistochemistry, Immunohistochemistry-Paraffin, Knockdown Validated
<b>Recommended Dilutions</b>	Western Blot 1:5000-1:15000, Immunohistochemistry 1:1000-1:5000, Immunohistochemistry-Paraffin 1:1000-1:5000, Knockdown Validated
<b>Application Notes</b>	By Western Blot this antibody recognizes a band at ~205 kDa, representing Diaphanous 1. Epitope Retrieval is not recommended.

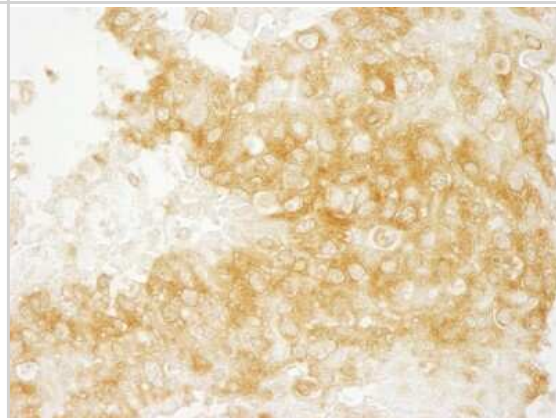


## Images

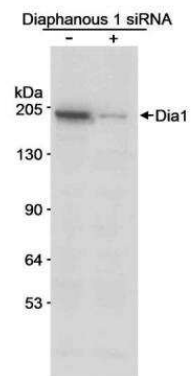
Western Blot: DIAPH1 Antibody [NB600-231] - Samples: Whole cell lysate (50 ug) from HeLa and 293T cells prepared using NETN lysis buffer. Antibody: Affinity purified rabbit anti-Diaphanous 1 antibody used for WB at 0.66 ug/ml. Detection: Chemiluminescence with an exposure time of 1 second.



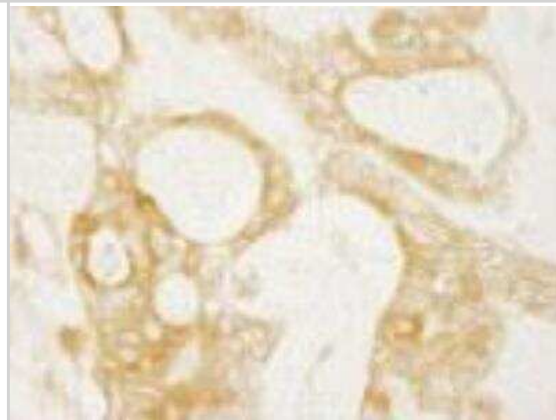
Immunohistochemistry: DIAPH1 Antibody [NB600-231] - Sample: FFPE section of human breast carcinoma. Antibody: Affinity purified rabbit anti-Diaphanous used at a dilution of 1:1,000 ( 1ug/ml). Detection: DAB



Western Blot: DIAPH1 Antibody [NB600-231] - Whole cell lysate (50 ug/lane) from untreated or siRNA treated 293T cells. Antibody used at 0.1 ug/ml.



Immunohistochemistry-Paraffin: DIAPH1 Antibody [NB600-231] - FFPE section of human ovarian carcinoma. Affinity purified rabbit anti-Diaphanous1 used at a dilution of 1:100.



## Publications

Lartey J, Smith M, Pawade J et al. Up-regulation of myometrial RHO effector proteins (PKN1 and DIAPH1) and CPI-17 (PPP1R14A) phosphorylation in human pregnancy is associated with increased GTP-RHOA in spontaneous preterm labor. Biol Reprod 2007-06-01 [PMID: 17301291]

Jewett TJ, Fischer ER, Mead DJ et al. Chlamydial TARP is a bacterial nucleator of actin. Proc Natl Acad Sci U S A 2006-10-01 [PMID: 17028176]





### **Novus Biologicals USA**

10730 E. Briarwood Avenue  
Centennial, CO 80112  
USA  
Phone: 303.730.1950  
Toll Free: 1.888.506.6887  
Fax: 303.730.1966  
nb-customerservice@bio-techne.com

### **Bio-Techne Canada**

21 Canmotor Ave  
Toronto, ON M8Z 4E6  
Canada  
Phone: 905.827.6400  
Toll Free: 855.668.8722  
Fax: 905.827.6402  
canada.inquires@bio-techne.com

### **Bio-Techne Ltd**

19 Barton Lane  
Abingdon Science Park  
Abingdon, OX14 3NB, United Kingdom  
Phone: (44) (0) 1235 529449  
Free Phone: 0800 37 34 15  
Fax: (44) (0) 1235 533420  
info.EMEA@bio-techne.com

### **General Contact Information**

www.novusbio.com  
Technical Support: nb-technical@bio-techne.com  
Orders: nb-customerservice@bio-techne.com  
General: novus@novusbio.com

### **Products Related to NB600-231**

---

HAF008	Goat anti-Rabbit IgG Secondary Antibody [HRP]
NB7160	Goat anti-Rabbit IgG (H+L) Secondary Antibody [HRP]
NBP2-24891	Rabbit IgG Isotype Control
NBP1-85246PEP	DIAPH1 Recombinant Protein Antigen

---

### **Limitations**

This product is for research use only and is not approved for use in humans or in clinical diagnosis. Primary Antibodies are guaranteed for 1 year from date of receipt.

For more information on our 100% guarantee, please visit [www.novusbio.com/guarantee](http://www.novusbio.com/guarantee)

Earn gift cards/discounts by submitting a review: [www.novusbio.com/reviews/submit/NB600-231](http://www.novusbio.com/reviews/submit/NB600-231)

Earn gift cards/discounts by submitting a publication using this product:  
[www.novusbio.com/publications](http://www.novusbio.com/publications)

