

Product Datasheet

beta Tubulin Antibody (D66) NB600-1514

Unit Size: 0.1 ml

Store at 4C short term. Aliquot and store at -20C long term. Avoid freeze-thaw cycles.

www.novusbio.com



technical@novusbio.com

Publications: 3

Protocols, Publications, Related Products, Reviews, Research Tools and Images at:
www.novusbio.com/NB600-1514

Updated 10/23/2024 v.20.1

Earn rewards for product
reviews and publications.

Submit a publication at www.novusbio.com/publications

Submit a review at www.novusbio.com/reviews/destination/NB600-1514



NB600-1514

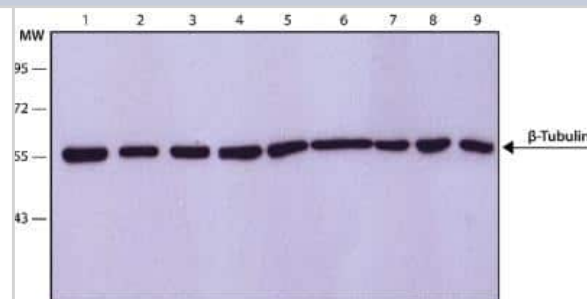
beta Tubulin Antibody (D66)

Product Information	
Unit Size	0.1 ml
Concentration	1.0 mg/ml
Storage	Store at 4C short term. Aliquot and store at -20C long term. Avoid freeze-thaw cycles.
Clonality	Monoclonal
Clone	D66
Preservative	0.9% Sodium Azide
Isotype	IgG1
Purity	Protein A or G purified
Buffer	10mM PBS (pH 7.4) and 1.0% BSA
Target Molecular Weight	~50 kDa
Product Description	
Host	Mouse
Gene ID	203068
Gene Symbol	TUBB
Species	Human, Mouse, Rat, Bovine, Canine, Chicken, Primate, Rabbit
Reactivity Notes	Cross-reacts with Human, Monkey Mouse, Rat, Cow, Chicken, Chlamydomonas reinhardtii, Dog, Rabbit, Dinoflagellate and Sea Urchin. Not yet tested in other species. Please note that this antibody is reactive to Mouse and derived from the same host, Mouse. Additional Mouse on Mouse blocking steps may be required for IHC and ICC experiments. Please contact Technical Support for more information.
Marker	Microtubule Marker
Specificity/Sensitivity	NB600-1514 recognizes all mouse brain beta tubulin isoforms (beta and beta subpopulations), and sea urchin beta Tubulin.
Immunogen	Sea urchin (Lytechinus pictus) sperm axonemal proteins.
Product Application Details	
Applications	Western Blot, ELISA, Immunocytochemistry/ Immunofluorescence, Immunoprecipitation
Recommended Dilutions	Western Blot 0.5-1 ug/ml, ELISA 1:100-1:2000, Immunocytochemistry/ Immunofluorescence 1:10-1:2000, Immunoprecipitation 1:10-1:500
Application Notes	ICC:(3% paraformaldehyde-0.5% Triton X-100 and methanol-acetone. Predicted molecular weight: 50 kDa.

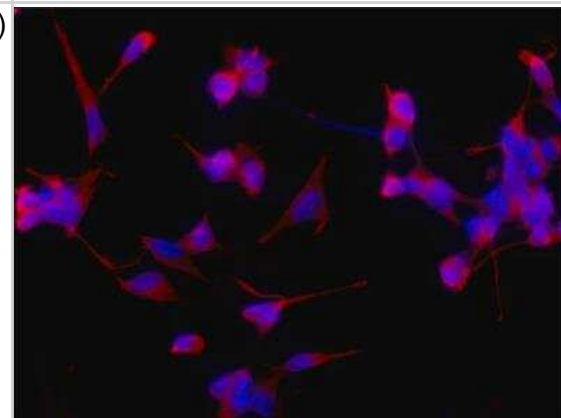


Images

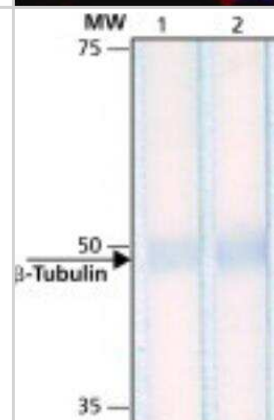
Western Blot: beta Tubulin Antibody (D66) [NB600-1514] - Cell line lysates were separated on SDS-PAGE and probed with 1 ug/mL Monoclonal Anti-beta Tubulin, Clone: D66. The antibody was developed using Goat Anti-Mouse IgG-Peroxidase and a chemiluminescent substrate. Lanes: 1. HeLa; 2. U87; 3. P19; 4. Neuro-2a; 5. PC-12; 6. COS-7; 7. CHO; 8. MDBK; 9. MDCK



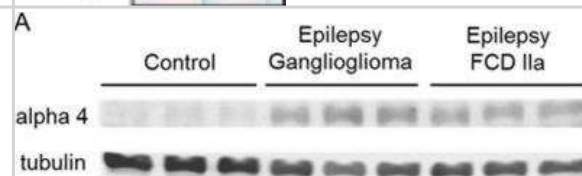
Immunocytochemistry/Immunofluorescence: beta Tubulin Antibody (D66) [NB600-1514] - SH-SY-5Y cells were fixed and permeabilized with methanol followed by methanol:acetone. Fixed cells were stained with 0.5 ug/mL Monoclonal Anti-beta Tubulin, Clone: D66. The antibody was developed using Goat Anti-Mouse IgG, Cy3 conjugate. Cells were counterstained with DAPI (blue) to stain nuclei.



Western Blot: beta Tubulin Antibody (D66) [NB600-1514] - beta Tubulin antibody Total cell extract of PC-12 was separated on SDS-PAGE. The antibody was developed with Goat Anti-Mouse IgG, alkaline phosphatase conjugate and a chemiluminescent substrate. Lanes 1. 0.5 ug/mL antibody 2. 1 ug/mL antibody



Western Blot: beta Tubulin Antibody (D66) [NB600-1514] - Increased expression of alpha4 subunit-containing GABARs in human epilepsy. GABAR 4 subunit protein expression in control and epilepsy cortical tissue. A representative blot from three control, three epilepsy-ganglioglioma, and three epilepsy-FCD IIa patients is shown. 30 ug of protein was used for each well and beta-tubulin expression was used as a loading control. Anti-alpha4 subunit (1:250 dilution, Novus Biologicals NB300-194, Littleton, CO) and anti-beta-tubulin (1:2000, Novus Biologicals NB600-1514) antibodies were used. Image collected and cropped by CiteAb from the following publication (<https://onlinelibrary.wiley.com/doi/abs/10.1002/acn3.51023>) licensed under a CC-BY license.



Publications

Joshi S, Roden WH, Kapur J, Jansen LA Reduced neurosteroid potentiation of GABAA receptors in epilepsy and depolarized hippocampal neurons Ann Clin Transl Neurol 2020-04-01 [PMID: 32243088] (WB, Human)

Jansen LA, Mirzaa GM, Ishak GE et al. PI3K/AKT pathway mutations cause a spectrum of brain malformations from megalencephaly to focal cortical dysplasia Brain 2015-02-25 [PMID: 25722288] (WB, Human)

Jansen LA, Hevner RF, Roden WH et al. Glial localization of antiquitin: Implications for pyridoxine-dependent epilepsy. Ann Neurol 2013-10-01 [PMID: 24122892] (WB, Human)





Novus Biologicals USA

10730 E. Briarwood Avenue
Centennial, CO 80112
USA
Phone: 303.730.1950
Toll Free: 1.888.506.6887
Fax: 303.730.1966
nb-customerservice@bio-techne.com

Bio-Techne Canada

21 Canmotor Ave
Toronto, ON M8Z 4E6
Canada
Phone: 905.827.6400
Toll Free: 855.668.8722
Fax: 905.827.6402
canada.inquires@bio-techne.com

Bio-Techne Ltd

19 Barton Lane
Abingdon Science Park
Abingdon, OX14 3NB, United Kingdom
Phone: (44) (0) 1235 529449
Free Phone: 0800 37 34 15
Fax: (44) (0) 1235 533420
info.EMEA@bio-techne.com

General Contact Information

www.novusbio.com
Technical Support: nb-technical@bio-techne.com
Orders: nb-customerservice@bio-techne.com
General: novus@novusbio.com

Products Related to NB600-1514

NBL1-17437	beta II Tubulin A Overexpression Lysate
HAF007	Goat anti-Mouse IgG Secondary Antibody [HRP]
NB720-B	Rabbit anti-Mouse IgG (H+L) Secondary Antibody [Biotin]
NBP1-97005-0.5mg	Mouse IgG1 Isotype Control (MG1)

Limitations

This product is for research use only and is not approved for use in humans or in clinical diagnosis. Primary Antibodies are guaranteed for 1 year from date of receipt.

For more information on our 100% guarantee, please visit www.novusbio.com/guarantee

Earn gift cards/discounts by submitting a review: www.novusbio.com/reviews/submit/NB600-1514

Earn gift cards/discounts by submitting a publication using this product:
www.novusbio.com/publications

