

Product Datasheet

GFP Antibody [Alkaline Phosphatase] NB600-1502

Unit Size: 0.1 mg

Store at 4C. Do not freeze.

www.novusbio.com



technical@novusbio.com

Publications: 1

Protocols, Publications, Related Products, Reviews, Research Tools and Images at:
www.novusbio.com/NB600-1502

Updated 7/23/2023 v.20.1

Earn rewards for product
reviews and publications.

Submit a publication at www.novusbio.com/publications

Submit a review at www.novusbio.com/reviews/destination/NB600-1502



NB600-1502**GFP Antibody [Alkaline Phosphatase]**

Product Information	
Unit Size	0.1 mg
Concentration	Please see the vial label for concentration. If unlisted please contact technical services.
Storage	Store at 4C. Do not freeze.
Clonality	Polyclonal
Preservative	0.1% Sodium Azide
Isotype	IgG
Conjugate	Alkaline Phosphatase
Purity	Immunogen affinity purified
Buffer	0.05 M Tris Chloride, 0.15M Sodium Chloride, 0.001M Magnesium Chloride, 0.0001M Zinc Chloride, 50% (v/v) Glycerol; pH 8.0, 10 mg/mL Bovine Serum Albumin (BSA) - Immunoglobulin and Protease free

Product Description	
Description	<p>Store vial at 4C before opening. DO NOT FREEZE. This product is stable at 4C as an undiluted liquid. Dilute only prior to immediate use. Freezing alkaline phosphatase conjugates will result in a substantial loss of enzymatic activity.</p> <p>This antibody was prepared from monospecific antiserum by immunoaffinity chromatography using Green Fluorescent Protein (<i>Aequorea victoria</i>) coupled to agarose beads followed by solid phase adsorption(s) to remove any unwanted reactivities. Assay by immunoelectrophoresis resulted in a single precipitin arc against anti-Goat Serum, anti-Alkaline Phosphatase and purified and partially purified Green Fluorescent Protein (<i>Aequorea victoria</i>) Serum</p>
Host	Goat
Species	Non-species specific
Reactivity Notes	No reaction was observed against Human, or Rat serum proteins. Known Cross Reactivity: rGFP. YFP differs from GFP due to a mutation at Thr203Tyr; antibodies raised against full-length GFP should also detect YFP and other variants. Reactivity in transgenic mice with GFP. Reactivity in human cell lines transfected with a GFP construct.
Specificity/Sensitivity	No reaction was observed against Human, Mouse and Rat Serum Proteins.
Immunogen	The immunogen is a Green Fluorescent Protein (GFP) fusion protein corresponding to the full length amino acid sequence (246aa) derived from the jellyfish <i>Aequorea victoria</i> . (Uniprot: P42212)

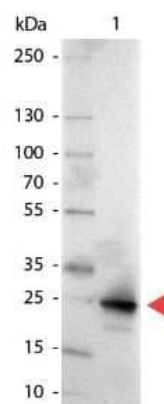
Product Application Details	
Applications	Western Blot, Simple Western, Dot Blot, ELISA, Immunohistochemistry, Immunohistochemistry-Paraffin, Knockdown Validated, Knockout Validated
Recommended Dilutions	Western Blot 1:500-1:2500, Simple Western 1:10, ELISA 1:2000-1:8000, Immunohistochemistry 1:200-1:1000, Immunohistochemistry-Paraffin 1:10-1:500, Dot Blot, Knockout Validated, Knockdown Validated

Application Notes

This product is designed to detect GFP and its variants. This product Alkaline Phosphatase conjugated antibody has been tested by ELISA, dot blot, and western blot. This antibody can be used to detect GFP by ELISA (sandwich or capture) for the direct binding of antigen and recognizes wild type, recombinant and enhanced forms of GFP. Biotin conjugated polyclonal anti-GFP used in a sandwich ELISA is well suited to titrate GFP in solution using this antibody in combination with monoclonal anti-GFP using either form of the antibody as the capture or detection antibodies. However, use the monoclonal form only for the detection of wild type or recombinant GFP as this form does not sufficiently detect 'enhanced' GFP. The detection antibody is typically conjugated to biotin and subsequently reacted with streptavidin conjugated HRP. Fluorochrome conjugated polyclonal anti-GFP can be used to detect GFP by immunofluorescence microscopy in prokaryotic (E.coli) and eukaryotic (CHO cells) expression systems and can detect GFP containing inserts. Significant amplification of signal is achieved using fluorochrome conjugated polyclonal anti-GFP relative to the fluorescence of GFP alone. For immunoblotting use either alkaline phosphatase or peroxidase conjugated polyclonal anti-GFP to detect GFP or GFP containing proteins on western blots

Images

Western Blot of GFP antibody [Alkaline Phosphatase]. Lane 1: GFP. Lane 2: none. Load: 50 ng per lane. Primary antibody: none. Secondary antibody: Alkaline Phosphatase GFP secondary antibody at 1:1000 for 60 min at RT. Block for 30 min RT. Predicted/Observed size: 28 kDa for GFP. Other band(s): none.



Dot Blot of GFP Antibody Alkaline Phosphatase Conjugated. Antigen: GFP. Load: Lane 1 - 100ng Lane 2 - 33.33ng Lane 3 - 11.11ng Lane 4 - 3.70ng Lane 5 - 1.23ng. Primary antibody: n/a. Secondary antibody: GFP Antibody [Alkaline Phosphatase] at 1:1,000 for 60 min at RT. Block for 60 min at RT. Visualized using Alkaline Phosphatase Substrate.

**Publications**

Xu J, Amiji M. Therapeutic gene delivery and transfection in human pancreatic cancer cells using epidermal growth factor receptor-targeted gelatin nanoparticles J Vis Exp 2012-01-04 [PMID: 22231028] (ELISA)

Details:

This citation used the Alkaline Phosphatase version of this antibody.



Novus Biologicals USA

10730 E. Briarwood Avenue
Centennial, CO 80112
USA
Phone: 303.730.1950
Toll Free: 1.888.506.6887
Fax: 303.730.1966
nb-customerservice@bio-techne.com

Bio-Techne Canada

21 Canmotor Ave
Toronto, ON M8Z 4E6
Canada
Phone: 905.827.6400
Toll Free: 855.668.8722
Fax: 905.827.6402
canada.inquires@bio-techne.com

Bio-Techne Ltd

19 Barton Lane
Abingdon Science Park
Abingdon, OX14 3NB, United Kingdom
Phone: (44) (0) 1235 529449
Free Phone: 0800 37 34 15
Fax: (44) (0) 1235 533420
info.EMEA@bio-techne.com

General Contact Information

www.novusbio.com
Technical Support: nb-technical@bio-techne.com
Orders: nb-customerservice@bio-techne.com
General: novus@novusbio.com

Products Related to NB600-1502

NBP1-96984	Goat IgG Isotype Control [Alkaline Phosphatase]
NB100-56401PEP	GFP Antibody Blocking Peptide
NBC1-22949	Recombinant GFP Protein

Limitations

This product is for research use only and is not approved for use in humans or in clinical diagnosis. Primary Antibodies are guaranteed for 1 year from date of receipt.

For more information on our 100% guarantee, please visit www.novusbio.com/guarantee

Earn gift cards/discounts by submitting a review: www.novusbio.com/reviews/submit/NB600-1502

Earn gift cards/discounts by submitting a publication using this product:
www.novusbio.com/publications

