

Product Datasheet

Syntrophin Antibody (1351)

NB600-1294-100ug

Unit Size: 100 ug

Store at -20C. Avoid freeze-thaw cycles.

www.novusbio.com



technical@novusbio.com

Publications: 1

Protocols, Publications, Related Products, Reviews, Research Tools and Images at:
www.novusbio.com/NB600-1294

Updated 9/9/2025 v.20.1

Earn rewards for product
reviews and publications.

Submit a publication at www.novusbio.com/publications

Submit a review at www.novusbio.com/reviews/destination/NB600-1294



NB600-1294-100ug**Syntrophin Antibody (1351)**

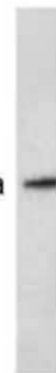
Product Information	
Unit Size	100 ug
Concentration	1 mg/ml
Storage	Store at -20C. Avoid freeze-thaw cycles.
Clonality	Monoclonal
Clone	1351
Preservative	0.05% Sodium Azide
Isotype	IgG1
Purity	Protein G purified
Buffer	PBS with 1 mg/ml BSA
Product Description	
Description	Novus Biologicals Mouse Syntrophin Antibody (1351) (NB600-1294) is a monoclonal antibody validated for use in IHC, WB, Flow, ICC/IF and IP. Anti-Syntrophin Antibody: Cited in 1 publication. All Novus Biologicals antibodies are covered by our 100% guarantee.
Host	Mouse
Gene ID	6640
Gene Symbol	SNTA1
Species	Human, Mouse, Rat, Amphibian, Canine, Chicken
Reactivity Notes	Please note that this antibody is reactive to Mouse and derived from the same host, Mouse. Additional Mouse on Mouse blocking steps may be required for IHC and ICC experiments. Please contact Technical Support for more information.
Specificity/Sensitivity	This antibody detects the alpha 1, beta 1 and beta 2 subunits of Syntrophin.
Immunogen	Whole purified syntrophin from Torpedo californica electric organ postsynaptic membrane.
Product Application Details	
Applications	Western Blot, Immunohistochemistry-Paraffin, Flow Cytometry, Immunocytochemistry/ Immunofluorescence, Immunohistochemistry, Immunoprecipitation
Recommended Dilutions	Western Blot 0.1 - 1 ug/ml, Flow Cytometry 0.5 ug / 10 ⁶ cells, Immunohistochemistry 1:10 - 1:500, Immunocytochemistry/ Immunofluorescence 1 - 2 ug/ml, Immunoprecipitation 1:10 - 1:500, Immunohistochemistry-Paraffin 1:10 - 1:500
Application Notes	WB: Detects an approx. 58 kDa protein representing syntrophin from rat and mouse cell extracts.

Images

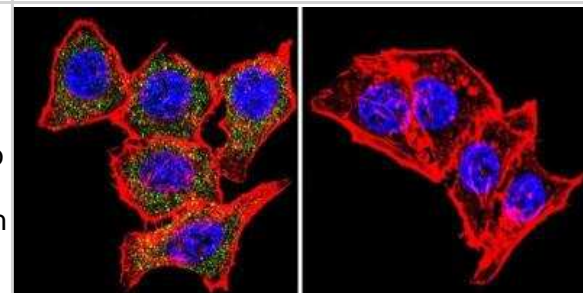
Western Blot: Syntrophin Antibody (1351) [NB600-1294] - Analysis of Syntrophin on canine lysate.

Fig. 1

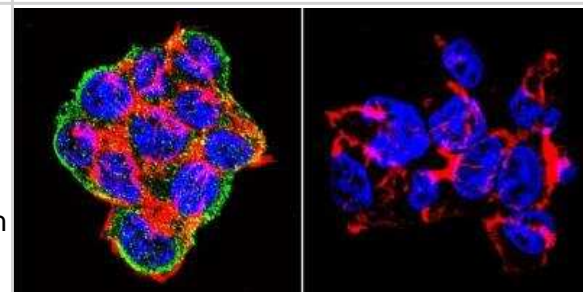
~58 kDa



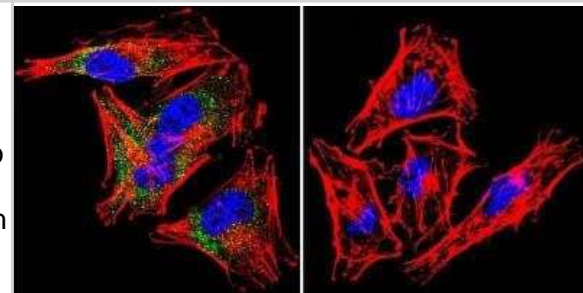
Immunocytochemistry/Immunofluorescence: Syntrophin Antibody (1351) [NB600-1294] - Analysis of Syntrophin using Syntrophin Monoclonal Antibody (1351) shows staining in Hela Cells. Syntrophin (green), F-Actin staining with Phalloidin (red) and nuclei with DAPI (blue) is shown. Cells were grown on chamber slides and fixed with formaldehyde prior to staining. Cells were probed without (control) or with an antibody recognizing Syntrophin at a dilution of 1:20 over night at 4C, washed with PBS and incubated with a DyLight-488 conjugated.



Immunocytochemistry/Immunofluorescence: Syntrophin Antibody (1351) [NB600-1294] - Analysis of Syntrophin using Syntrophin Monoclonal Antibody (1351) shows staining in 293Cells. Syntrophin (green), F-Actin staining with Phalloidin (red) and nuclei with DAPI (blue) is shown. Cells were grown on chamber slides and fixed with formaldehyde prior to staining. Cells were probed without (control) or with an antibody recognizing Syntrophin at a dilution of 1:20 over night at 4C, washed with PBS and incubated with a DyLight-488 conjugated.



Immunocytochemistry/Immunofluorescence: Syntrophin Antibody (1351) [NB600-1294] - Analysis of Syntrophin using Syntrophin Monoclonal Antibody (1351) shows staining in A2058 Cells. Syntrophin (green), F-Actin staining with Phalloidin (red) and nuclei with DAPI (blue) is shown. Cells were grown on chamber slides and fixed with formaldehyde prior to staining. Cells were probed without (control) or with an antibody recognizing Syntrophin at a dilution of 1:20 over night at 4C, washed with PBS and incubated with a DyLight-488 conjugated.



Publications

Annese T, Corsi P, Ruggieri S et al. Isolation and characterization of neural stem cells from dystrophic mdx mouse. *Exp. Cell Res.* 2016-03-22 [PMID: 27015747] (ICC/IF, WB, Mouse)



Novus Biologicals USA

10730 E. Briarwood Avenue
Centennial, CO 80112
USA
Phone: 303.730.1950
Toll Free: 1.888.506.6887
Fax: 303.730.1966
nb-customerservice@bio-techne.com

Bio-Techne Canada

21 Canmotor Ave
Toronto, ON M8Z 4E6
Canada
Phone: 905.827.6400
Toll Free: 855.668.8722
Fax: 905.827.6402
canada.inquires@bio-techne.com

Bio-Techne Ltd

19 Barton Lane
Abingdon Science Park
Abingdon, OX14 3NB, United Kingdom
Phone: (44) (0) 1235 529449
Free Phone: 0800 37 34 15
Fax: (44) (0) 1235 533420
info.EMEA@bio-techne.com

General Contact Information

www.novusbio.com
Technical Support: nb-technical@bio-techne.com
Orders: nb-customerservice@bio-techne.com
General: novus@novusbio.com

Products Related to NB600-1294-100ug

NBP2-33376H	Blue Marker Antibody (6F4-F6) [HRP]
HAF007	Goat anti-Mouse IgG Secondary Antibody [HRP]
NB7539	Goat anti-Mouse IgG (H+L) Secondary Antibody [HRP]
NBP1-97005-0.5mg	Mouse IgG1 Isotype Control (MG1)

Limitations

This product is for research use only and is not approved for use in humans or in clinical diagnosis. Primary Antibodies are guaranteed for 1 year from date of receipt.

For more information on our 100% guarantee, please visit www.novusbio.com/guarantee

Earn gift cards/discounts by submitting a review: www.novusbio.com/reviews/submit/NB600-1294

Earn gift cards/discounts by submitting a publication using this product:
www.novusbio.com/publications

