

Product Datasheet

Protein Disulfide Isomerase/P4HB Antibody (RL77) NB600-1164

Unit Size: 100 uL

Store at -20C. Avoid freeze-thaw cycles.

www.novusbio.com



technical@novusbio.com

Publications: 3

Protocols, Publications, Related Products, Reviews, Research Tools and Images at:
www.novusbio.com/NB600-1164

Updated 12/28/2023 v.20.1

Earn rewards for product
reviews and publications.

Submit a publication at www.novusbio.com/publications

Submit a review at www.novusbio.com/reviews/destination/NB600-1164

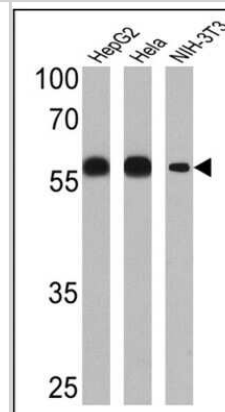


NB600-1164**Protein Disulfide Isomerase/P4HB Antibody (RL77)**

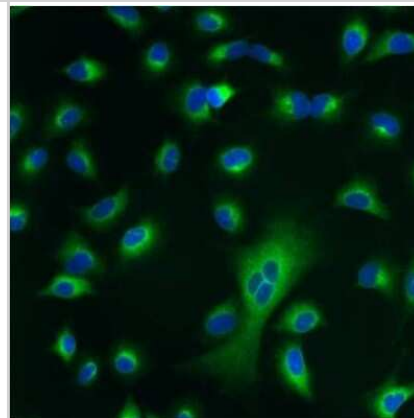
Product Information	
Unit Size	100 uL
Concentration	This product is unpurified. The exact concentration of antibody is not quantifiable.
Storage	Store at -20C. Avoid freeze-thaw cycles.
Clonality	Monoclonal
Clone	RL77
Preservative	0.05% Sodium Azide
Isotype	IgG2b
Purity	Unpurified
Buffer	Ascites diluted with PBS
Target Molecular Weight	58 kDa
Product Description	
Host	Mouse
Gene ID	5034
Gene Symbol	P4HB
Species	Human, Mouse, Rat, Porcine, Hamster, Xenopus
Reactivity Notes	Use in Human reported in scientific literature (PMID:33806982).
Marker	Endoplasmic Reticulum Marker
Specificity/Sensitivity	NB600-1164 detects Protein Disulfide Isomerase/P4HB from human, mouse, rat, porcine, xenopus liver tissues as well as hamster (CHO) cells.
Immunogen	Purified rat Protein Disulfide Isomerase/P4HB protein.
Product Application Details	
Applications	Western Blot, Flow Cytometry, Immunocytochemistry/ Immunofluorescence, Immunohistochemistry, Immunohistochemistry-Paraffin, Immunoprecipitation
Recommended Dilutions	Western Blot 1:200 - 1:2000, Flow Cytometry 1:10 - 1:1000, Immunohistochemistry 1:100, Immunocytochemistry/ Immunofluorescence 1:10 - 1:500, Immunoprecipitation 1:10 - 1:500, Immunohistochemistry-Paraffin 1:100
Application Notes	WB usage was reported in scientific literature (PMID: 21292774). WB: Detects an approx. 59 kDa representing Protein Disulfide Isomerase/P4HB from rat liver extract or a slightly higher protein at 61 kDa representing Protein Disulfide Isomerase/P4HB from human liver extract. IHC: Staining of Protein Disulfide Isomerase/P4HB in rat intestine with ab5484 yields a pattern consistent with cytoplasmic staining. IP: ab5484 has been shown to inhibit the activity of Protein Disulfide Isomerase/P4HB in vitro.

Images

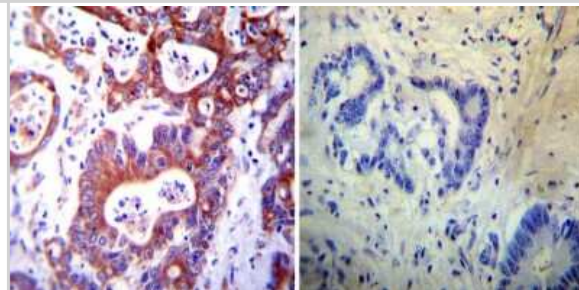
Western Blot: Protein Disulfide Isomerase/P4HB Antibody (RL77) [NB600-1164] - Analysis of 25 ug of HepG2 (Lane 1), HeLa (Lane 2) and NIH-3T3 (Lane 3) cell lysates.



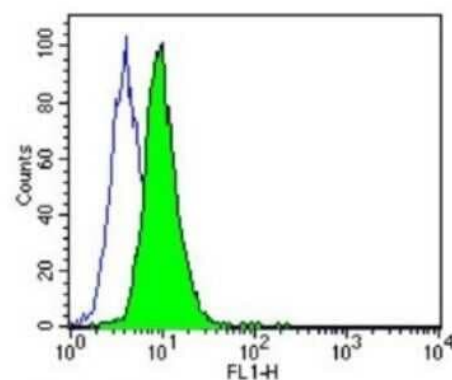
Immunocytochemistry/Immunofluorescence: Protein Disulfide Isomerase/P4HB Antibody (RL77) [NB600-1164] - Analysis of Protein Disulfide Isomerase/P4HB using monoclonal antibody shows staining in A549 Cells.



Immunohistochemistry-Paraffin: Protein Disulfide Isomerase/P4HB Antibody (RL77) [NB600-1164] - Both normal and cancer biopsies of deparaffinized Human colon carcinoma tissues.

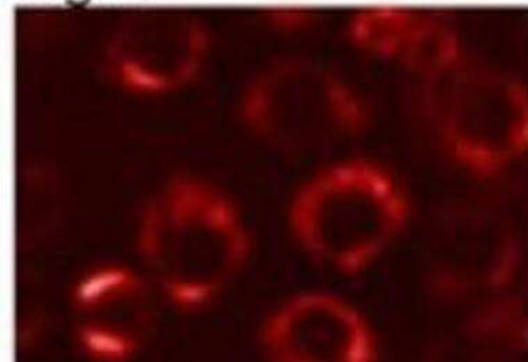


Flow Cytometry: Protein Disulfide Isomerase/P4HB Antibody (RL77) [NB600-1164] - Analysis of 3T3 cells compared to an isotype control (blue).

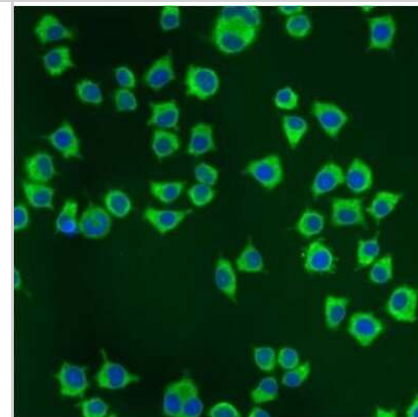


Immunocytochemistry/Immunofluorescence: Protein Disulfide Isomerase/P4HB Antibody (RL77) [NB600-1164] - Staining of rat epithelial cells.

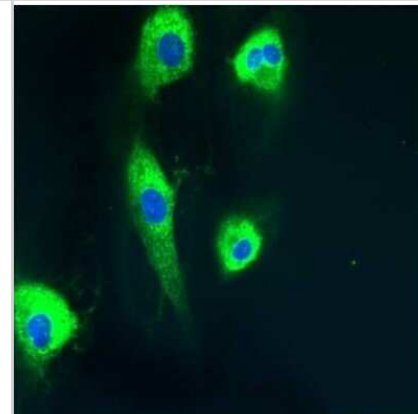
Fig. 1



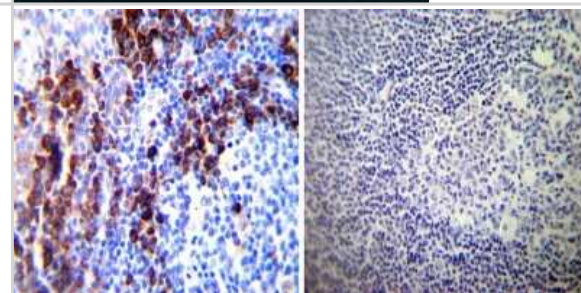
Immunocytochemistry/Immunofluorescence: Protein Disulfide Isomerase/P4HB Antibody (RL77) [NB600-1164] - Analysis of NS-1 Cells.



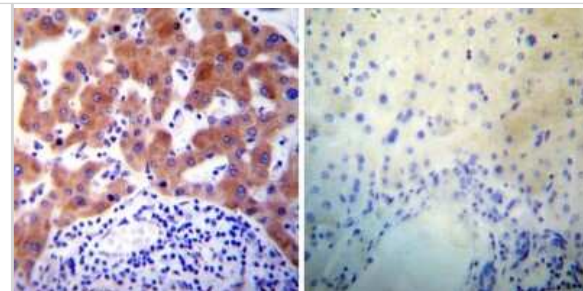
Immunocytochemistry/Immunofluorescence: Protein Disulfide Isomerase/P4HB Antibody (RL77) [NB600-1164] - Analysis shows staining in HMVEC Cells.



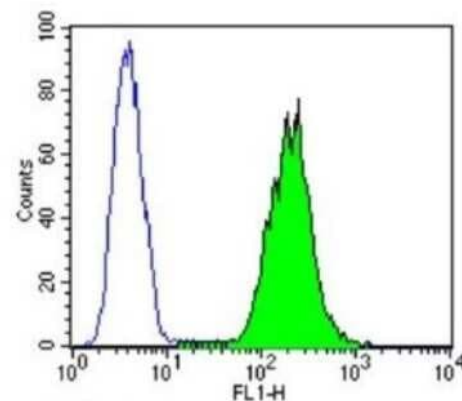
Immunohistochemistry-Paraffin: Protein Disulfide Isomerase/P4HB Antibody (RL77) [NB600-1164] - Normal deparaffinized Human tonsil tissue tissues.



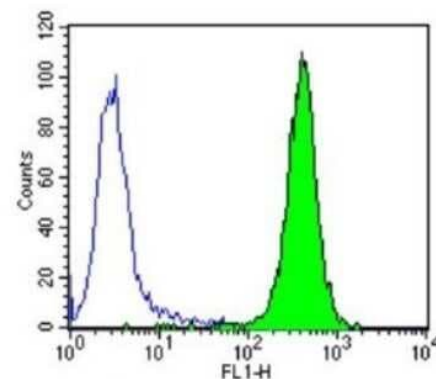
Immunohistochemistry-Paraffin: Protein Disulfide Isomerase/P4HB Antibody (RL77) [NB600-1164] - Both normal and cancer biopsies of deparaffinized Human liver tissues.



Flow Cytometry: Protein Disulfide Isomerase/P4HB Antibody (RL77) [NB600-1164] - Analysis of K562 cells compared to an isotype control (blue).



Flow Cytometry: Protein Disulfide Isomerase/P4HB Antibody (RL77) [NB600-1164] - Analysis of Hela cells compared to an isotype control (blue).



Publications

Gaspar R, Sage T, Little G et al. Protein Disulphide Isomerase and NADPH Oxidase 1 Cooperate to Control Platelet Function and Are Associated with Cardiometabolic Disease Risk Factors Antioxidants 2021-03-23 [PMID: 33806982] (ICC/IF, Human)

Lee S, Min Kim S, Dotimas J et al. Thioredoxin-interacting protein regulates protein disulfide isomerases and endoplasmic reticulum stress. EMBO Mol Med. 2014-05-19 [PMID: 24843047] (WB, Human)

Jun HS, Lee YM, Song K et al. G-CSF improves murine G6PC3-deficient neutrophil function by modulating apoptosis and energy homeostasis Blood 2011-04-07 [PMID: 21292774] (WB, Mouse)



Novus Biologicals USA

10730 E. Briarwood Avenue
Centennial, CO 80112
USA
Phone: 303.730.1950
Toll Free: 1.888.506.6887
Fax: 303.730.1966
nb-customerservice@bio-techne.com

Bio-Techne Canada

21 Canmotor Ave
Toronto, ON M8Z 4E6
Canada
Phone: 905.827.6400
Toll Free: 855.668.8722
Fax: 905.827.6402
canada.inquires@bio-techne.com

Bio-Techne Ltd

19 Barton Lane
Abingdon Science Park
Abingdon, OX14 3NB, United Kingdom
Phone: (44) (0) 1235 529449
Free Phone: 0800 37 34 15
Fax: (44) (0) 1235 533420
info.EMEA@bio-techne.com

General Contact Information

www.novusbio.com
Technical Support: nb-technical@bio-techne.com
Orders: nb-customerservice@bio-techne.com
General: novus@novusbio.com

Products Related to NB600-1164

HAF007	Goat anti-Mouse IgG Secondary Antibody [HRP]
NB720-B	Rabbit anti-Mouse IgG (H+L) Secondary Antibody [Biotin]
NBP2-27231	Mouse IgG2b Isotype Control (MPC-11)
NBP2-35195-100ug	Recombinant Human Protein Disulfide Isomerase/P4HB Protein

Limitations

This product is for research use only and is not approved for use in humans or in clinical diagnosis. Primary Antibodies are guaranteed for 1 year from date of receipt.

For more information on our 100% guarantee, please visit www.novusbio.com/guarantee

Earn gift cards/discounts by submitting a review: www.novusbio.com/reviews/submit/NB600-1164

Earn gift cards/discounts by submitting a publication using this product:
www.novusbio.com/publications

