

# Product Datasheet

## CaM Kinase I Antibody NB600-1163

Unit Size: 100ug

Store at -20C. Avoid freeze-thaw cycles.

[www.novusbio.com](http://www.novusbio.com)



[technical@novusbio.com](mailto:technical@novusbio.com)

Protocols, Publications, Related Products, Reviews, Research Tools and Images at:  
[www.novusbio.com/NB600-1163](http://www.novusbio.com/NB600-1163)

Updated 10/23/2024 v.20.1

Earn rewards for product  
reviews and publications.

Submit a publication at [www.novusbio.com/publications](http://www.novusbio.com/publications)

Submit a review at [www.novusbio.com/reviews/destination/NB600-1163](http://www.novusbio.com/reviews/destination/NB600-1163)



**NB600-1163****CaM Kinase I Antibody**

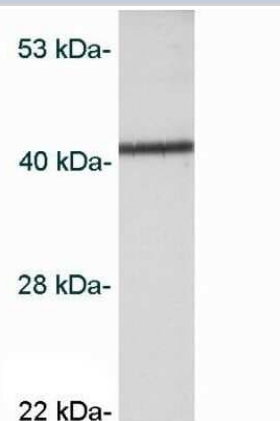
| Product Information |  |
|---------------------|--|
| Unit Size           | 100ug                                    |
| Concentration       | 1 mg/ml                                  |
| Storage             | Store at -20C. Avoid freeze-thaw cycles. |
| Clonality           | Polyclonal                               |
| Preservative        | 0.05% Sodium Azide                       |
| Isotype             | IgG                                      |
| Purity              | Immunogen affinity purified              |
| Buffer              | PBS with 1 mg/ml BSA                     |

| Product Description     |   |
|-------------------------|---|
| Host                    | Rabbit  |
| Gene ID                 | 8536  |
| Gene Symbol             | CAMK1   |
| Species                 | Mouse, Rat  |
| Reactivity Notes        | Expected cross-reactivity with Human base on sequence identity. |
| Specificity/Sensitivity | Detects CaMKI from rat brain extract.                           |
| Immunogen               | Synthetic Peptide: A(1) V E G P R W K Q A E D I R D I Y D(18)   |

| Product Application Details |  |
|-----------------------------|--|
| Applications                | Western Blot   |
| Recommended Dilutions       | Western Blot 2 ug/ml   |
| Application Notes           | WB: Detects an approx. 43 kDa protein representing CaMKI from rat brain extract. |

**Images**

Western Blot: CaM Kinase I Antibody [NB600-1163] - Analysis of AtT20 cell extract.

**Fig. 1**

**Novus Biologicals USA**

10730 E. Briarwood Avenue  
Centennial, CO 80112  
USA  
Phone: 303.730.1950  
Toll Free: 1.888.506.6887  
Fax: 303.730.1966  
nb-customerservice@bio-techne.com

**Bio-Techne Canada**

21 Canmotor Ave  
Toronto, ON M8Z 4E6  
Canada  
Phone: 905.827.6400  
Toll Free: 855.668.8722  
Fax: 905.827.6402  
canada.inquires@bio-techne.com

**Bio-Techne Ltd**

19 Barton Lane  
Abingdon Science Park  
Abingdon, OX14 3NB, United Kingdom  
Phone: (44) (0) 1235 529449  
Free Phone: 0800 37 34 15  
Fax: (44) (0) 1235 533420  
info.EMEA@bio-techne.com

**General Contact Information**

[www.novusbio.com](http://www.novusbio.com)  
Technical Support: nb-technical@bio-techne.com  
Orders: nb-customerservice@bio-techne.com  
General: novus@novusbio.com

**Products Related to NB600-1163**

|                    |   |
|--------------------|---|
| HAF008             | Goat anti-Rabbit IgG Secondary Antibody [HRP]       |
| NB7160             | Goat anti-Rabbit IgG (H+L) Secondary Antibody [HRP] |
| NBP2-24891         | Rabbit IgG Isotype Control                          |
| H00008536-P01-10ug | Recombinant Human CaM Kinase I GST (N-Term) Protein |

**Limitations**

This product is for research use only and is not approved for use in humans or in clinical diagnosis. Primary Antibodies are guaranteed for 1 year from date of receipt.

For more information on our 100% guarantee, please visit [www.novusbio.com/guarantee](http://www.novusbio.com/guarantee)

Earn gift cards/discounts by submitting a review: [www.novusbio.com/reviews/submit/NB600-1163](http://www.novusbio.com/reviews/submit/NB600-1163)

Earn gift cards/discounts by submitting a publication using this product:  
[www.novusbio.com/publications](http://www.novusbio.com/publications)

