

# Product Datasheet

## IL-23R Antibody - BSA Free NB600-1147-0.2ml

Unit Size: 0.2 ml

Store at 4C short term. Aliquot and store at -20C long term. Avoid freeze-thaw cycles.

[www.novusbio.com](http://www.novusbio.com)



[technical@novusbio.com](mailto:technical@novusbio.com)

**Reviews: 1 Publications: 8**

Protocols, Publications, Related Products, Reviews, Research Tools and Images at:  
[www.novusbio.com/NB600-1147](http://www.novusbio.com/NB600-1147)

Updated 2/27/2025 v.20.1

**Earn rewards for product  
reviews and publications.**

Submit a publication at [www.novusbio.com/publications](http://www.novusbio.com/publications)

Submit a review at [www.novusbio.com/reviews/destination/NB600-1147](http://www.novusbio.com/reviews/destination/NB600-1147)



**NB600-1147-0.2ml**

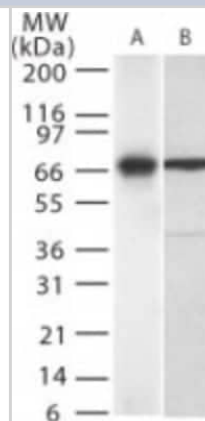
IL-23R Antibody - BSA Free

Product Information	
Unit Size	0.2 ml
Concentration	1.0 mg/ml
Storage	Store at 4C short term. Aliquot and store at -20C long term. Avoid freeze-thaw cycles.
Clonality	Polyclonal
Preservative	0.05% Sodium Azide
Isotype	IgG
Purity	Protein G purified
Buffer	PBS
Target Molecular Weight	72 kDa
Product Description	
Host	Rabbit
Gene ID	149233
Gene Symbol	IL23R
Species	Human, Mouse
Immunogen	Synthetic peptide located at amino acids 439-455 (EIFIPEHKPTDYKKENT) of human IL-23R (NP_653302).
Product Application Details	
Applications	Western Blot, Simple Western, Flow Cytometry, Flow (Cell Surface), Immunohistochemistry, Immunohistochemistry-Paraffin
Recommended Dilutions	Western Blot 0.5-1.0 ug/ml, Simple Western 1:10, Flow Cytometry 1:10-1:1000, Immunohistochemistry 5-10 ug/ml, Immunohistochemistry-Paraffin 5-10 ug/ml, Flow (Cell Surface) reported in scientific literature (PMID 24358364)
Application Notes	<p>Based on immunogen sequence, this antibody will recognize the 629 amino acid (approx. 68 kDa) , 390 AA (approx. 42 kDa) and 227 AA (approx. 26 kDa) forms of human IL-23R. Flow (Cell Surface): See Kortylweski et al, 2009 for details.</p> <p>In Simple Western only 10 - 15 uL of the recommended dilution is used per data point.</p> <p>See <a href="#">Simple Western Antibody Database</a> for Simple Western validation: Tested in NIH-3T3 lysate 0.5 mg/mL, separated by Size, antibody dilution of 1:10, apparent MW was 71 kDa. Separated by Size-Wes, Sally Sue/Peggy Sue.</p>

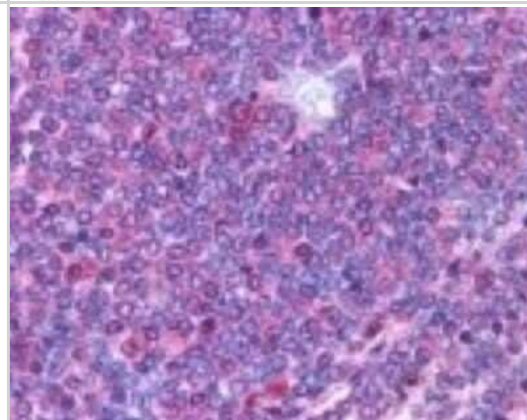


## Images

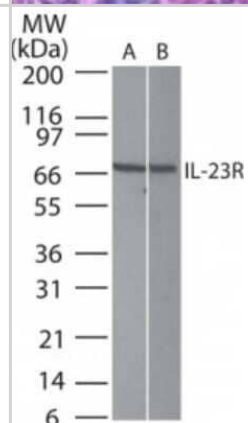
Western Blot: IL-23 R Antibody [NB600-1147] - Analysis of IL-23R in (A) Jurkat and (B) NIH 3T3 cells. 1:500 dilution.



Immunohistochemistry-Paraffin: IL-23 R Antibody [NB600-1147] - Staining of IL-23 Receptor in Human periarterial lymphatic sheath lymphocytes (spleen) at 10 ug/ml. Hematoxylin-eosin counterstain.



Western Blot: IL-23 R Antibody [NB600-1147] - Analysis using IL-23R antibody. Lysate from (A) human Jurkat and (B) Mouse NIH 3T3 cells probed with IL-23R antibody at 0.5 ug/ml.



Immunohistochemistry-Paraffin: IL-23 R Antibody [NB600-1147] - Analysis of Mouse spleen tissue probed with isotype control antibody (top) and IL-23R antibody (bottom) at 5 ug/ml.



Simple Western: IL-23 R Antibody [NB600-1147] - Lane view shows a specific band for IL23 Receptor in 0.5 mg/ml of NIH-3T3 lysate. This experiment was performed under reducing conditions using the 12-230 kDa separation system.



## Publications

Gupta S, Pungsrinont T, Zenata O et al. Interleukin-23 Represses the Level of Cell Senescence Induced by the Androgen Receptor Antagonists Enzalutamide and Darolutamide in Castration-Resistant Prostate Cancer Cells *Horm Cancer* 2020-06-20 [PMID: 32562083]

Tan Q, Ma XY, Liu W et al. Significant reduction in the expression of interleukins-17A, 22 and 23A, forkhead box p3 and interferon gamma delineates lichen planus pigmentosus from lichen planus *Arch. Dermatol. Res.* 2019-05-14 [PMID: 31089878] (IF/IHC, Human)

Xu X, Yang C, Chen J et al. Interleukin-23 promotes the migration and invasion of gastric cancer cells by inducing epithelial-to-mesenchymal transition via the STAT3 pathway *Biochem Biophys Res Commun* 2018-03-23 [PMID: 29574157] (IF/IHC, Human)

Nakayama W, Jinnin M, Tomizawa Y et al. Dysregulated interleukin-23 signalling contributes to the increased collagen production in scleroderma fibroblasts via balancing microRNA expression. *Rheumatology (Oxford)* 2016-10-15 [PMID: 27744356] (IF/IHC, WB, Human)

Walker CR, Hautefort I, Dalton JE, et al. Intestinal Intraepithelial Lymphocyte-Enterocyte Crosstalk Regulates Production of Bactericidal Angiogenin 4 by Paneth Cells upon Microbial Challenge. *PLoS One* 2013-12-17 [PMID: 24358364] (Flow-CS, Mouse)

Kortylewski M, Xin H, Kujawski M et al. Regulation of the IL-23 and IL-12 balance by Stat3 signaling in the tumor microenvironment. *Cancer Cell.* 2009-02-03 [PMID: 19185846] (Flow-CS, Mouse)

### Details:

IL-23R (IMG-5092A): Flow (cell surface), mouse spleen and lymph nodes including lymph nodes from tumor models, Fig 5A. Prior to staining, freshly isolated cells were preincubated with an FcγmIII/IIR-specific antibody to block non-specific binding. The

Li Z, Wu F, Brant SR, Kwon JH. IL-23 receptor regulation by Let-7f in human CD4+ memory T cells. *J Immunol.* 2011-06-01 [PMID: 21508257] (WB, Human)

### Details:

IL-23 Receptor (IMG-5092A). WB: Human primary memory T cells transfected with control or Let-7f, Fig 6.

Wang S, Xu X, Xie A et al. Anti-interleukin-12/23p40 antibody attenuates chronic rejection of cardiac allografts partly via inhibition gamma delta T cells *Clin Exp Immunol* 2012-09-01 [PMID: 22861372] (IF/IHC, Mouse)



### **Novus Biologicals USA**

10730 E. Briarwood Avenue  
Centennial, CO 80112  
USA  
Phone: 303.730.1950  
Toll Free: 1.888.506.6887  
Fax: 303.730.1966  
nb-customerservice@bio-techne.com

### **Bio-Techne Canada**

21 Canmotor Ave  
Toronto, ON M8Z 4E6  
Canada  
Phone: 905.827.6400  
Toll Free: 855.668.8722  
Fax: 905.827.6402  
canada.inquires@bio-techne.com

### **Bio-Techne Ltd**

19 Barton Lane  
Abingdon Science Park  
Abingdon, OX14 3NB, United Kingdom  
Phone: (44) (0) 1235 529449  
Free Phone: 0800 37 34 15  
Fax: (44) (0) 1235 533420  
info.EMEA@bio-techne.com

### **General Contact Information**

www.novusbio.com  
Technical Support: nb-technical@bio-  
techne.com  
Orders: nb-customerservice@bio-techne.com  
General: novus@novusbio.com

### **Limitations**

This product is for research use only and is not approved for use in humans or in clinical diagnosis. Primary Antibodies are guaranteed for 1 year from date of receipt.

For more information on our 100% guarantee, please visit [www.novusbio.com/guarantee](http://www.novusbio.com/guarantee)

Earn gift cards/discounts by submitting a review: [www.novusbio.com/reviews/submit/NB600-1147](http://www.novusbio.com/reviews/submit/NB600-1147)

Earn gift cards/discounts by submitting a publication using this product:  
[www.novusbio.com/publications](http://www.novusbio.com/publications)

