

Product Datasheet

MeCP2 Antibody NB600-1101

Unit Size: 50ug

Store at -20C. Avoid freeze-thaw cycles.

www.novusbio.com



technical@novusbio.com

Publications: 5

Protocols, Publications, Related Products, Reviews, Research Tools and Images at:
www.novusbio.com/NB600-1101

Updated 4/29/2021 v.20.1

**Earn rewards for product
reviews and publications.**

Submit a publication at www.novusbio.com/publications

Submit a review at www.novusbio.com/reviews/destination/NB600-1101



NB600-1101

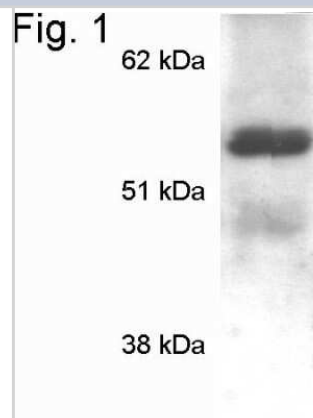
MeCP2 Antibody

Product Information	
Unit Size	50ug
Concentration	1 mg/ml
Storage	Store at -20C. Avoid freeze-thaw cycles.
Clonality	Polyclonal
Preservative	0.05% Sodium Azide
Isotype	IgG
Purity	Immunogen affinity purified
Buffer	PBS with 1 mg/ml BSA
Target Molecular Weight	52 kDa
Product Description	
Host	Rabbit
Gene ID	4204
Gene Symbol	MECP2
Species	Human, Mouse, Rat
Marker	Nucleus Marker
Specificity/Sensitivity	This detects methyl CpG binding protein 2 (MeCP2) from human, mouse and rat tissues and cells.
Immunogen	Synthetic Peptide: M(1) V A G M L G L R E E K S E D(15) C
Product Application Details	
Applications	Western Blot, Immunocytochemistry/Immunofluorescence, Immunohistochemistry, Immunohistochemistry-Paraffin, Immunoprecipitation
Recommended Dilutions	Western Blot 0.5 ug/ml, Immunohistochemistry 1:200 - 1:2000, Immunocytochemistry/Immunofluorescence 1:100 - 1:200, Immunoprecipitation 1:10 - 1:500, Immunohistochemistry-Paraffin 1:200 - 1:2000

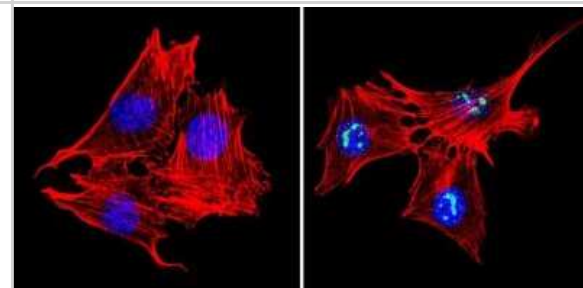


Images

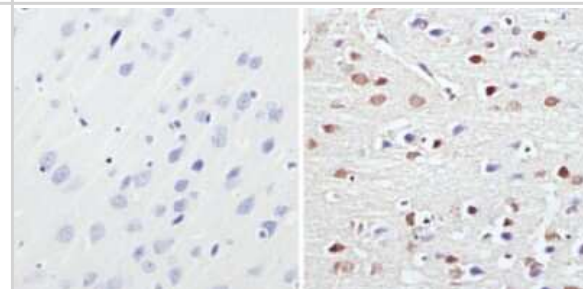
Western Blot: MeCP2 Antibody [NB600-1101] - Analysis of HeLa cell extract.



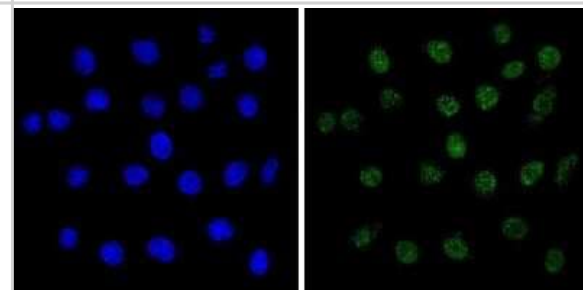
Immunocytochemistry/Immunofluorescence: MeCP2 Antibody [NB600-1101] - Analysis of Methyl CpG Binding Protein 2 (green) showing staining in the nucleus of C2C12 cells (right) compared to a negative control without primary antibody (left).



Immunohistochemistry-Paraffin: MeCP2 Antibody [NB600-1101] - Staining in the nucleus of rat brain tissue (right) compared to a negative control without primary antibody (left).



Immunocytochemistry/Immunofluorescence: MeCP2 Antibody [NB600-1101] - Analysis of Methyl CpG Binding Protein 2 (green) showing staining in the nucleus of C6 cells (right) compared to a negative control without primary antibody (left).



Publications

Poon CH, Liu Y, Pak S et al. Prelimbic Cortical Stimulation with L-methionine Enhances Cognition through Hippocampal DNA Methylation and Neuroplasticity Mechanisms Aging and disease 2023-02-01 [PMID: 36818556] (WB, Rat)

Lu HE, Yang YC, Chen SM et al. Modeling Neurogenesis Impairment in Down Syndrome with Induced Pluripotent Stem Cells from Trisomy 21 Amniotic Fluid Cells Exp Cell Res 2012-10-04 [PMID: 23041301] (WB, Human)

Cukier HN, Perez AM, Collins AL et al. Genetic modifiers of MeCP2 function in Drosophila. PLoS Genet. 2008-09-01 [PMID: 18773074]

LaSalle JM, Goldstine J, Balmer D et al. Quantitative localization of heterogeneous methyl-CpG-binding protein 2 (MeCP2) expression phenotypes in normal and Rett syndrome brain by laser scanning cytometry. Hum Mol Genet. 2001-08-01 [PMID: 11532982]

Jones PL, Veenstra GJ, Wade PA et al. Methylated DNA and MeCP2 recruit histone deacetylase to repress transcription. Nat Genet. 1998-06-01 [PMID: 9620779]





Novus Biologicals USA

10730 E. Briarwood Avenue
Centennial, CO 80112
USA
Phone: 303.730.1950
Toll Free: 1.888.506.6887
Fax: 303.730.1966
nb-customerservice@bio-techne.com

Bio-Techne Canada

21 Canmotor Ave
Toronto, ON M8Z 4E6
Canada
Phone: 905.827.6400
Toll Free: 855.668.8722
Fax: 905.827.6402
canada.inquires@bio-techne.com

Bio-Techne Ltd

19 Barton Lane
Abingdon Science Park
Abingdon, OX14 3NB, United Kingdom
Phone: (44) (0) 1235 529449
Free Phone: 0800 37 34 15
Fax: (44) (0) 1235 533420
info.EMEA@bio-techne.com

General Contact Information

www.novusbio.com
Technical Support: nb-technical@bio-techne.com
Orders: nb-customerservice@bio-techne.com
General: novus@novusbio.com

Products Related to NB600-1101

HAF008	Goat anti-Rabbit IgG Secondary Antibody [HRP]
NB7160	Goat anti-Rabbit IgG (H+L) Secondary Antibody [HRP]
NBP2-24891	Rabbit IgG Isotype Control
H00004204-P01-2ug	Recombinant Human MeCP2 GST (N-Term) Protein

Limitations

This product is for research use only and is not approved for use in humans or in clinical diagnosis. Primary Antibodies are guaranteed for 1 year from date of receipt.

For more information on our 100% guarantee, please visit www.novusbio.com/guarantee

Earn gift cards/discounts by submitting a review: www.novusbio.com/reviews/submit/NB600-1101

Earn gift cards/discounts by submitting a publication using this product:
www.novusbio.com/publications

