

Product Datasheet

Podoplanin Antibody - Azide and BSA Free NB600-1014

Unit Size: 0.2 mg

Store at 4C short term. Aliquot and store at -20C long term. Avoid freeze-thaw cycles.

www.novusbio.com



technical@novusbio.com

Publications: 1

Protocols, Publications, Related Products, Reviews, Research Tools and Images at:
www.novusbio.com/NB600-1014

Updated 2/21/2025 v.20.1

Earn rewards for product
reviews and publications.

Submit a publication at www.novusbio.com/publications

Submit a review at www.novusbio.com/reviews/destination/NB600-1014



NB600-1014

Podoplanin Antibody - Azide and BSA Free

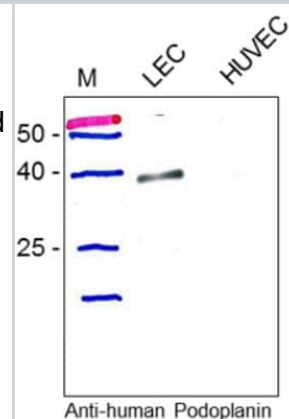
Product Information	
Unit Size	0.2 mg
Concentration	LYOPH mg/ml
Storage	Store at 4C short term. Aliquot and store at -20C long term. Avoid freeze-thaw cycles.
Clonality	Polyclonal
Preservative	No Preservative
Reconstitution Instructions	Centrifuge vial prior to opening. Reconstitute in sterile water to a concentration of 0.1-1.0 mg/ml. Please note the sample size of this product will be provided in reconstituted liquid form.
Isotype	IgG
Purity	Protein A purified
Buffer	PBS

Product Description	
Host	Rabbit
Gene ID	10630
Gene Symbol	PDPN
Species	Human
Marker	Lymphatic Endothelium Marker
Immunogen	Recombinant human Podoplanin

Product Application Details	
Applications	Western Blot, Flow Cytometry, Immunohistochemistry, Immunoprecipitation, CyTOF-ready
Recommended Dilutions	Western Blot 1-5 ug/ml, Flow Cytometry 1:10-1:1000, Immunohistochemistry, Immunoprecipitation 1:10-1:500, CyTOF-ready
Application Notes	WB: Predicted molecular weight: 24 kDa. Optimal dilutions/concentrations should be determined by the end user. Flow Cytometry reactivity reported in (PMID:21406228).

Images

Western Blot: Podoplanin Antibody [NB600-1014] - Fig. 1: Western blot analysis of Podoplanin expression in human lymphatic endothelial cells (LEC) and HUVECs. Total lysate of both cell types were subjected to SDS-PAGE and subsequent Western analysis using our monoclonal and polyclonal antibodies. Both antibodies recognize a protein of about 36 kDa in total lysate from LECs but not from HUVEC.



Publications

Steele M, Schieler A, Kelley P et al. β 1 integrin regulates MMP-10 dependant tubulogenesis in human lymphatic endothelial cells Matrix Biol 2011-04-01 [PMID: 21406228] (FLOW, Human)





Novus Biologicals USA

10730 E. Briarwood Avenue
Centennial, CO 80112
USA
Phone: 303.730.1950
Toll Free: 1.888.506.6887
Fax: 303.730.1966
nb-customerservice@bio-techne.com

Bio-Techne Canada

21 Canmotor Ave
Toronto, ON M8Z 4E6
Canada
Phone: 905.827.6400
Toll Free: 855.668.8722
Fax: 905.827.6402
canada.inquires@bio-techne.com

Bio-Techne Ltd

19 Barton Lane
Abingdon Science Park
Abingdon, OX14 3NB, United Kingdom
Phone: (44) (0) 1235 529449
Free Phone: 0800 37 34 15
Fax: (44) (0) 1235 533420
info.EMEA@bio-techne.com

General Contact Information

www.novusbio.com
Technical Support: nb-technical@bio-techne.com
Orders: nb-customerservice@bio-techne.com
General: novus@novusbio.com

Products Related to NB600-1014

HAF008	Goat anti-Rabbit IgG Secondary Antibody [HRP]
NB7160	Goat anti-Rabbit IgG (H+L) Secondary Antibody [HRP]
NBP2-24891	Rabbit IgG Isotype Control
NBC1-18511	Recombinant Human Podoplanin His Protein

Limitations

This product is for research use only and is not approved for use in humans or in clinical diagnosis. Primary Antibodies are guaranteed for 1 year from date of receipt.

For more information on our 100% guarantee, please visit www.novusbio.com/guarantee

Earn gift cards/discounts by submitting a review: www.novusbio.com/reviews/submit/NB600-1014

Earn gift cards/discounts by submitting a publication using this product:
www.novusbio.com/publications

