

Product Datasheet

Podoplanin Antibody (18H5) - Azide and BSA Free NB600-1013

Unit Size: 0.1 mg

Store at 4C short term. Aliquot and store at -20C long term. Avoid freeze-thaw cycles.

www.novusbio.com



technical@novusbio.com

Publications: 2

Protocols, Publications, Related Products, Reviews, Research Tools and Images at:
www.novusbio.com/NB600-1013

Updated 10/23/2024 v.20.1

Earn rewards for product
reviews and publications.

Submit a publication at www.novusbio.com/publications

Submit a review at www.novusbio.com/reviews/destination/NB600-1013



NB600-1013

Podoplanin Antibody (18H5) - Azide and BSA Free

| Product Information | |
|------------------------------------|---|
| Unit Size | 0.1 mg |
| Concentration | LYOPH mg/ml |
| Storage | Store at 4C short term. Aliquot and store at -20C long term. Avoid freeze-thaw cycles. |
| Clonality | Monoclonal |
| Clone | 18H5 |
| Preservative | No Preservative |
| Reconstitution Instructions | Centrifuge vial prior to opening. Reconstitute in sterile water to a concentration of 0.1-1.0 mg/ml. Please note the sample size of this product will be provided in reconstituted liquid form. |
| Isotype | IgG1 |
| Purity | Protein G purified |
| Buffer | PBS |

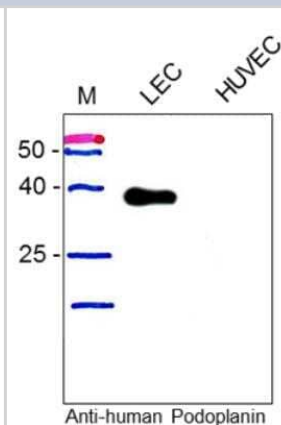
| Product Description | |
|----------------------------|--|
| Host | Mouse |
| Gene ID | 10630 |
| Gene Symbol | PDPN |
| Species | Human |
| Marker | Lymphatic Endothelium Marker |
| Immunogen | MDCK cells stably expressing gp36 (Podoplanin) protein |

| Product Application Details | |
|------------------------------------|---|
| Applications | Western Blot, Flow Cytometry, Immunocytochemistry/ Immunofluorescence, Immunohistochemistry, CyTOF-ready |
| Recommended Dilutions | Western Blot 1 - 5 ug/ml, Flow Cytometry 1 - 10 ug/ml, Immunohistochemistry 6 - 30 ug/ml, Immunocytochemistry/ Immunofluorescence 6 - 30 ug/ml, CyTOF-ready |
| Application Notes | This antibody is Cytof ready. |

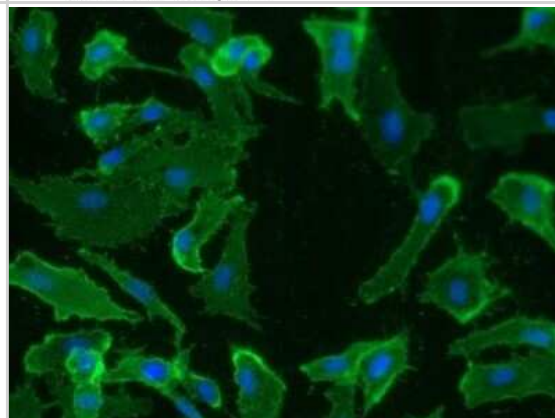


Images

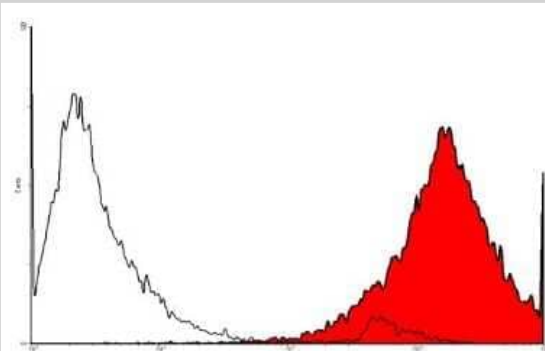
Western Blot: Podoplanin Antibody (18H5) [NB600-1013] - Fig. 1: Western blot analysis of Podoplanin expression in human lymphatic endothelial cells (LEC) and HUVECs. Total lysate of both cell types were subjected to SDS-PAGE and subsequent Western analysis using our monoclonal and polyclonal antibodies. Both antibodies recognize a protein of about 36 kDa in total lysate from LECs but not from HUVEC.



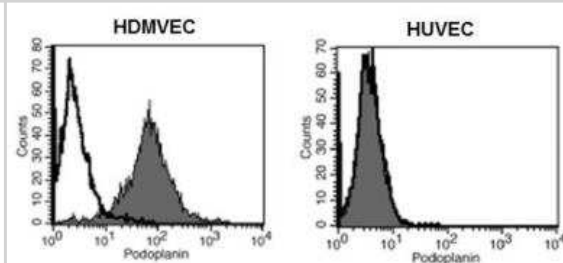
Immunocytochemistry/Immunofluorescence: Podoplanin Antibody (18H5) [NB600-1013] - staining (green) of Podoplanin in primary human dermal lymphatic endothelial cells (HDLEC) with anti-human Podoplanin (0,5ug/ml) and counter staining of nuclei with Dapi. As secondary antibody goat anti-mouse ALEXA Flour 488 was used 1:400.



Flow Cytometry: Podoplanin Antibody (18H5) [NB600-1013] - analysis with human primary lymphatic endothelial cells (HDLEC). As secondary antibody anti-mouse IgG-PE was used.



Flow Cytometry: Podoplanin Antibody (18H5) [NB600-1013] - Fig. 1: Flow analysis of Podoplanin expression in primary human dermal microvascular endothelial cells (HDMVEC) and human umbilical vein endothelial cells (HUVEC). As expected there is no expression of Podoplanin detectable in the HUVECs but a strong one in the HDMVEC.



Publications

Ducoli L, Agrawal S, Sibling E et al LETR1 is a lymphatic endothelial-specific lncRNA governing cell proliferation and migration through KLF4 and SEMA3C Nat Commun 2021-02-11 [PMID: 33568674] (FLOW, Human)

Details:

Citation using the Alexa Fluor 647 version of this antibody.

Tacconi C, He Y, Ducoli L, Detmar M Epigenetic regulation of the lineage specificity of primary human dermal lymphatic and blood vascular endothelial cells Angiogenesis 2020-09-12 [PMID: 32918672] (FLOW, Human)





Novus Biologicals USA

10730 E. Briarwood Avenue
Centennial, CO 80112
USA
Phone: 303.730.1950
Toll Free: 1.888.506.6887
Fax: 303.730.1966
nb-customerservice@bio-techne.com

Bio-Techne Canada

21 Canmotor Ave
Toronto, ON M8Z 4E6
Canada
Phone: 905.827.6400
Toll Free: 855.668.8722
Fax: 905.827.6402
canada.inquires@bio-techne.com

Bio-Techne Ltd

19 Barton Lane
Abingdon Science Park
Abingdon, OX14 3NB, United Kingdom
Phone: (44) (0) 1235 529449
Free Phone: 0800 37 34 15
Fax: (44) (0) 1235 533420
info.EMEA@bio-techne.com

General Contact Information

www.novusbio.com
Technical Support: nb-technical@bio-techne.com
Orders: nb-customerservice@bio-techne.com
General: novus@novusbio.com

Products Related to NB600-1013

| | |
|------------------|---|
| HAF007 | Goat anti-Mouse IgG Secondary Antibody [HRP] |
| NB720-B | Rabbit anti-Mouse IgG (H+L) Secondary Antibody [Biotin] |
| NBP1-97005-0.5mg | Mouse IgG1 Isotype Control (MG1) |
| NB600-1013AF647 | Podoplanin Antibody (18H5) [Alexa Fluor® 647] |

Limitations

This product is for research use only and is not approved for use in humans or in clinical diagnosis. Primary Antibodies are guaranteed for 1 year from date of receipt.

For more information on our 100% guarantee, please visit www.novusbio.com/guarantee

Earn gift cards/discounts by submitting a review: www.novusbio.com/reviews/submit/NB600-1013

Earn gift cards/discounts by submitting a publication using this product:
www.novusbio.com/publications

