

Product Datasheet

LYVE-1 Antibody - Azide and BSA Free NB600-1005

Unit Size: 0.2 mg

Store at 4C short term. Aliquot and store at -20C long term. Avoid freeze-thaw cycles.

www.novusbio.com



technical@novusbio.com

Reviews: 1

Protocols, Publications, Related Products, Reviews, Research Tools and Images at:
www.novusbio.com/NB600-1005

Updated 2/21/2025 v.20.1

Earn rewards for product
reviews and publications.

Submit a publication at www.novusbio.com/publications

Submit a review at www.novusbio.com/reviews/destination/NB600-1005



NB600-1005

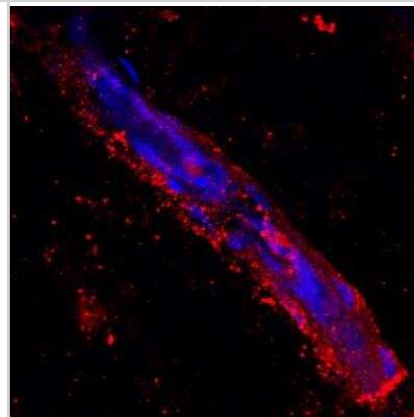
LYVE-1 Antibody - Azide and BSA Free

Product Information	
Unit Size	0.2 mg
Concentration	LYOPH mg/ml
Storage	Store at 4C short term. Aliquot and store at -20C long term. Avoid freeze-thaw cycles.
Clonality	Polyclonal
Preservative	No Preservative
Reconstitution Instructions	Centrifuge vial prior to opening. Reconstitute in sterile water to a concentration of 0.1-1.0 mg/ml. Please note the sample size of this product will be provided in reconstituted liquid form.
Isotype	IgG
Purity	Protein A purified
Buffer	PBS
Target Molecular Weight	35 kDa
Product Description	
Host	Rabbit
Gene ID	10894
Gene Symbol	LYVE1
Species	Human
Marker	Lymphatic Vessel Marker
Immunogen	Recombinant human LYVE-1
Product Application Details	
Applications	Western Blot, Flow Cytometry, Immunohistochemistry, Immunohistochemistry-Frozen, Immunohistochemistry-Paraffin, CyTOF-ready
Recommended Dilutions	Western Blot 2-5 ug/ml, Flow Cytometry 2-30 ug/ml, Immunohistochemistry 1:10-1:500, Immunohistochemistry-Paraffin 1:10-1:500, Immunohistochemistry-Frozen 6-30 ug/ml, CyTOF-ready
Application Notes	IHC: Originally, it has not been tested on formalin-fixed tissue sections. However, recently one of our customers has used it successfully on this type of application (see review). Predicted molecular weight: 39 kDa. Not tested in other applications. Optimal dilutions/concentrations should be determined by the end user.

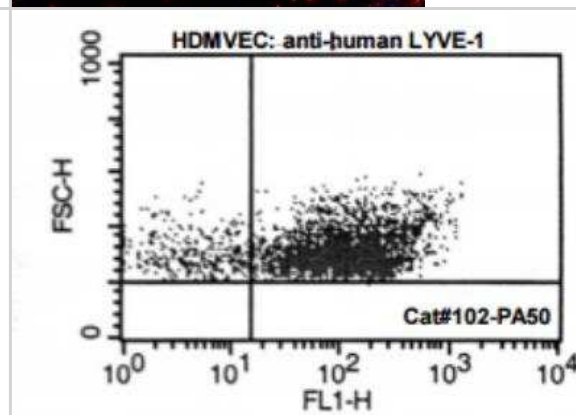


Images

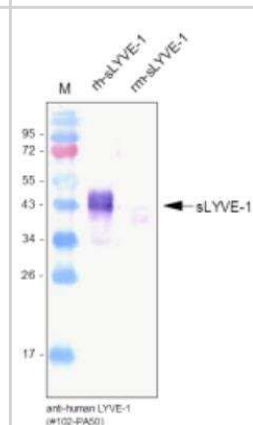
Immunohistochemistry: LYVE-1 Antibody [NB600-1005] - LYVE1 Antibody [NB600-1005] - Staining of human skin showing positivity in lymphatic vessels. Image provided by Patricia Redondo.



Flow Cytometry: LYVE-1 Antibody [NB600-1005] - Analysis with primary human dermal microvascular endothelial cells (HDMVEC).



Western Blot: LYVE-1 Antibody [NB600-1005] - Analysis of recombinant human sLYVE-1 and mouse sLYVE-1 using an anti-human LYVE-1 polyclonal antibody directed against the extracellular domain of human LYVE-1. There is more or less no cross reactivity with mouse LYVE-1.





Novus Biologicals USA

10730 E. Briarwood Avenue
Centennial, CO 80112
USA
Phone: 303.730.1950
Toll Free: 1.888.506.6887
Fax: 303.730.1966
nb-customerservice@bio-techne.com

Bio-Techne Canada

21 Canmotor Ave
Toronto, ON M8Z 4E6
Canada
Phone: 905.827.6400
Toll Free: 855.668.8722
Fax: 905.827.6402
canada.inquires@bio-techne.com

Bio-Techne Ltd

19 Barton Lane
Abingdon Science Park
Abingdon, OX14 3NB, United Kingdom
Phone: (44) (0) 1235 529449
Free Phone: 0800 37 34 15
Fax: (44) (0) 1235 533420
info.EMEA@bio-techne.com

General Contact Information

www.novusbio.com
Technical Support: nb-technical@bio-techne.com
Orders: nb-customerservice@bio-techne.com
General: novus@novusbio.com

Products Related to NB600-1005

HAF008	Goat anti-Rabbit IgG Secondary Antibody [HRP]
NB7160	Goat anti-Rabbit IgG (H+L) Secondary Antibody [HRP]
NBP2-24891	Rabbit IgG Isotype Control
NB100-725PEP	LYVE-1 Antibody Blocking Peptide

Limitations

This product is for research use only and is not approved for use in humans or in clinical diagnosis. Primary Antibodies are guaranteed for 1 year from date of receipt.

For more information on our 100% guarantee, please visit www.novusbio.com/guarantee

Earn gift cards/discounts by submitting a review: www.novusbio.com/reviews/submit/NB600-1005

Earn gift cards/discounts by submitting a publication using this product:
www.novusbio.com/publications

