

# Product Datasheet

## ERCC1 Antibody (8F1) - BSA Free NB500-704

Unit Size: 0.1 ml

Store at 4C short term. Aliquot and store at -20C long term. Avoid freeze-thaw cycles.

[www.novusbio.com](http://www.novusbio.com)



[technical@novusbio.com](mailto:technical@novusbio.com)

**Reviews: 1** **Publications: 17**

Protocols, Publications, Related Products, Reviews, Research Tools and Images at:  
[www.novusbio.com/NB500-704](http://www.novusbio.com/NB500-704)

Updated 10/23/2024 v.20.1

Earn rewards for product  
reviews and publications.

Submit a publication at [www.novusbio.com/publications](http://www.novusbio.com/publications)

Submit a review at [www.novusbio.com/reviews/destination/NB500-704](http://www.novusbio.com/reviews/destination/NB500-704)



**NB500-704**

ERCC1 Antibody (8F1) - BSA Free

<b>Product Information</b>	
<b>Unit Size</b>	0.1 ml
<b>Concentration</b>	1.0 mg/ml
<b>Storage</b>	Store at 4C short term. Aliquot and store at -20C long term. Avoid freeze-thaw cycles.
<b>Clonality</b>	Monoclonal
<b>Clone</b>	8F1
<b>Preservative</b>	0.02% Sodium Azide
<b>Isotype</b>	IgG2b
<b>Purity</b>	Protein G purified
<b>Buffer</b>	PBS
<b>Product Description</b>	
<b>Host</b>	Mouse
<b>Gene ID</b>	2067
<b>Gene Symbol</b>	ERCC1
<b>Species</b>	Human, Rat, Chinese Hamster
<b>Reactivity Notes</b>	Human, rat. Chinese Hamster reactivity reported in scientific literature (PMID: 17962301) Not yet tested in other species.
<b>Immunogen</b>	Full length recombinant human ERCC1. [UniProt# P07992]
<b>Product Application Details</b>	
<b>Applications</b>	Western Blot, Immunocytochemistry/ Immunofluorescence, Immunohistochemistry, Immunohistochemistry-Paraffin
<b>Recommended Dilutions</b>	Western Blot 1:100-1:2000, Immunohistochemistry 1:10-1:500, Immunocytochemistry/ Immunofluorescence 1:10-1:500, Immunohistochemistry-Paraffin 1:100-1:200
<b>Application Notes</b>	IHC: In an ABC method, we suggest an incubation period of 30 minutes at room temperature. However, depending upon the fixation conditions and the staining system employed, optimal incubation conditions and antibody dilutions should be determined by the user. Formalin fixed paraffin embedded tissue sections require high temperature antigen unmasking with 10 mM citrate buffer, pH 6.0 prior to immunostaining. Antibody can be used in Immunocytochemistry/Immunofluorescence as reported in the literature (PMID: 21961533)Western Blot was reported in scientific literature.

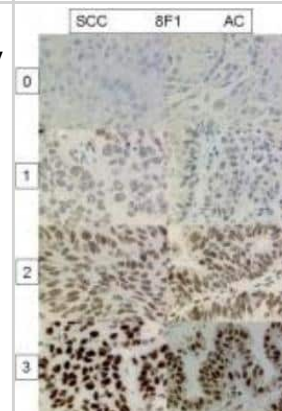


## Images

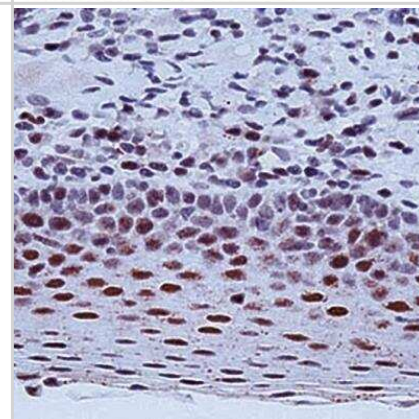
Immunohistochemistry-Paraffin: ERCC1 Antibody (8F1) [NB500-704] - Cyto-histologic comparison of anti-ERCC1 immunoreactivity using the protocol 8F1 CC1-mono (top) or 8F1 H2-60 (bottom). Left: Pleural effusion sediment of lung adenocarcinoma. Right: thoracic lymph node. Arrow: Lymphocyte. Arrowhead: Streak of endothelial cells. Asterisk: Tumor cell cluster. 400 A- original magnification. Image collected and cropped by Citeab from the following publication (Automated ERCC1 immunochemistry on hybrid cytology/tissue microarray of malignant effusions: evaluation of antibodies 8F1 and D-10. *J Clin Bioinforma* (2011) licensed under a CC-BY license.



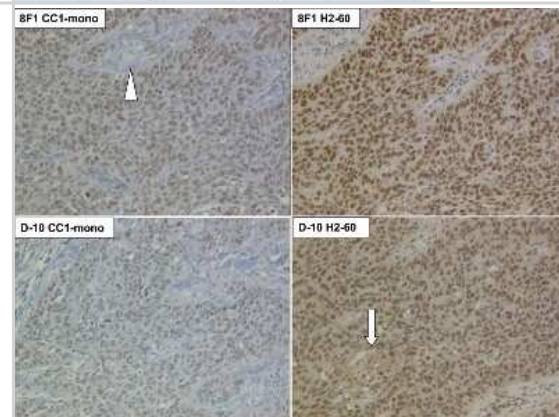
Immunohistochemistry-Paraffin: ERCC1 Antibody (8F1) [NB500-704] - Analysis of ERCC1 in human non-small cell lung cancer. Image courtesy of product review submitted by Alex Soltermann.



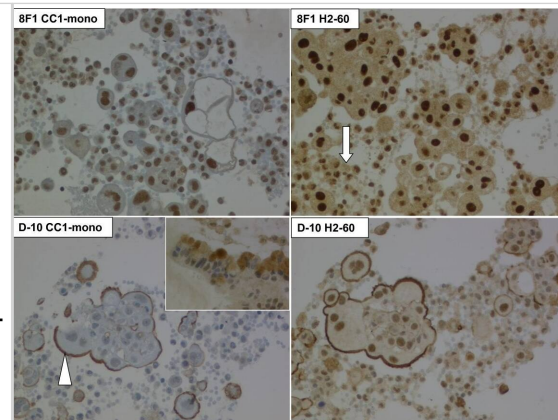
Immunohistochemistry-Paraffin: ERCC1 Antibody (8F1) [NB500-704] - Formalin fixed paraffin embedded human tonsil stained with ERCC1 antibody.



Immunohistochemistry-Paraffin: ERCC1 Antibody (8F1) [NB500-704] - Anti-ERCC1 immunohistochemistry on whole sections of a lung squamous cell carcinoma, using Mab 8F1 and D-10 with CC1-mono and H2-60 protocols. Note increased cytosolic background with H2-60. Arrow: Necrotic centre. Arrowhead: Stromal axis. 100 A- original magnification. Image collected and cropped by Citeab from the following publication (Automated ERCC1 immunochemistry on hybrid cytology/tissue microarray of malignant effusions: evaluation of antibodies 8F1 and D-10. *J Clin Bioinforma* (2011) licensed under a CC-BY license.



Immunohistochemistry: ERCC1 Antibody (8F1) - BSA Free [NB500-704] - Anti-ERCC1 immunocytochemistry on cell block core of malignant pleural mesothelioma, using Mab 8F1 & D-10 with CC1-mono & H2-60 protocols. Arrow: Surrounding non-tumoral cells, including lymphocytes, macrophages & neutrophil granulocytes. Arrowhead: Unspecific plasma membrane staining with D-10. 200 × original magnification. Inset lower left: Staining of intracellular mucin vacuoles of a mucinous adenocarcinoma of unknown origin. 400 × original magnification. Image collected & cropped by CiteAb from the following publication (<http://jclinbioinformatics.biomedcentral.com/articles/10.1186/2043-9113-1-25>), licensed under a CC-BY license. Not internally tested by Novus Biologicals.



## Publications

PriYadarshini R, Hussain M, Attri P et al. BLM Potentiates c-Jun Degradation and Alters Its Function as an Oncogenic Transcription Factor. *Cell Rep.* 2018-07-24 [PMID: 30044990]

Barone D, Iannuzzi CA, Forte IM et al. The hydrophilic extract from a new tomato genotype (named DHO) kills cancer cell lines through the modulation of the DNA damage response induced by Camptothecin treatment *Frontiers in Oncology* 2023-06-20 [PMID: 37409248]

Bepler G, Zinner RG, Moon J et al. A phase 2 cooperative group adjuvant trial using a biomarker-based decision algorithm in patients with stage I non-small cell lung cancer (SWOG-0720, NCT00792701). *Cancer* 2014-04-18 [PMID: 24752945] (IHC-P, Human)

Al-Minawi AZ, Saleh-gohari N, Helleday T et al. The ERCC1/XPF endonuclease is required for efficient single-strand annealing and gene conversion in mammalian cells. *Nucleic Acids Res.* 2008-01-01 [PMID: 17962301] (WB, Chinese Hamster, Human)

Bhaqwat NR, Roginskaya VY, Acquafondata MB et al. Immunodetection of DNA repair endonuclease ERCC1-XPF in human tissue. *Cancer Res.* 2009-09-01 [PMID: 19723666] (IF/IHC, WB, Human)

Besse B, Massard C, Haddad V et al. ERCC1 influence on the incidence of brain metastases in patients with non-squamous NSCLC treated with adjuvant cisplatin-based chemotherapy. *Ann Oncol.* 2011-03-01 [PMID: 20801905] (IF/IHC, Human)

Lee S, Park YH, Kim KH et al. Thymidine synthase, thymidine phosphorylase, and excision repair cross-complementation group 1 expression as predictive markers of capecitabine plus cisplatin chemotherapy as first-line treatment for patients with advanced oesophageal squamous cell carcinoma. *Br J Cancer.* 2010-09-07 [PMID: 20700125] (IF/IHC, Human)

Shao YY, Kuo KT, Hu FC et al. Predictive and prognostic values of tau and ERCC1 in advanced breast cancer patients treated with paclitaxel and cisplatin. *Jpn J Clin Oncol.* 2010-04-01 [PMID: 20085902] (IF/IHC, Human)

Hwang IG, Ahn MJ, Park BB et al. ERCC1 expression as a prognostic marker in N2(+) non-small-cell lung cancer patients treated with platinum-based neoadjuvant concurrent chemoradiotherapy. *Cancer.* 2008-09-15 [PMID: 18623378] (IF/IHC, Human)

Jun HJ, Ahn MJ, Kim HS et al. ERCC1 expression as a predictive marker of squamous cell carcinoma of the head and neck treated with cisplatin-based concurrent chemoradiation. *Br J Cancer.* 2008-07-08 [PMID: 18594541] (IF/IHC, Human)

Kim MK, Cho KJ, Kwon GY et al. Patients with ERCC1-negative locally advanced esophageal cancers may benefit from preoperative chemoradiotherapy. *Clin Cancer Res.* 2008-07-01 [PMID: 18594004] (IF/IHC, Human)

Azim HA Jr, Pruneri g, Raviele PR et al. ERCC1 Expression in Diffuse Large B-Cell Lymphoma Patients Treated with a Cisplatin-Based Regimen : A Brief Communication. *EJ Egypt Natl Canc Inst.* 2007-09-01 [PMID: 19190690] (IF/IHC, Human)

More publications at <http://www.novusbio.com/NB500-704>



### **Novus Biologicals USA**

10730 E. Briarwood Avenue  
Centennial, CO 80112  
USA  
Phone: 303.730.1950  
Toll Free: 1.888.506.6887  
Fax: 303.730.1966  
nb-customerservice@bio-techne.com

### **Bio-Techne Canada**

21 Canmotor Ave  
Toronto, ON M8Z 4E6  
Canada  
Phone: 905.827.6400  
Toll Free: 855.668.8722  
Fax: 905.827.6402  
canada.inquires@bio-techne.com

### **Bio-Techne Ltd**

19 Barton Lane  
Abingdon Science Park  
Abingdon, OX14 3NB, United Kingdom  
Phone: (44) (0) 1235 529449  
Free Phone: 0800 37 34 15  
Fax: (44) (0) 1235 533420  
info.EMEA@bio-techne.com

### **General Contact Information**

www.novusbio.com  
Technical Support: nb-technical@bio-techne.com  
Orders: nb-customerservice@bio-techne.com  
General: novus@novusbio.com

### **Products Related to NB500-704**

---

NBL1-10318	ERCC1 Overexpression Lysate
HAF007	Goat anti-Mouse IgG Secondary Antibody [HRP]
NB720-B	Rabbit anti-Mouse IgG (H+L) Secondary Antibody [Biotin]
NBP2-27231	Mouse IgG2b Isotype Control (MPC-11)

---

### **Limitations**

This product is for research use only and is not approved for use in humans or in clinical diagnosis. Primary Antibodies are guaranteed for 1 year from date of receipt.

For more information on our 100% guarantee, please visit [www.novusbio.com/guarantee](http://www.novusbio.com/guarantee)

Earn gift cards/discounts by submitting a review: [www.novusbio.com/reviews/submit/NB500-704](http://www.novusbio.com/reviews/submit/NB500-704)

Earn gift cards/discounts by submitting a publication using this product:  
[www.novusbio.com/publications](http://www.novusbio.com/publications)

