

# Product Datasheet

## beta-III Tubulin Antibody (TU-20) [FITC] NB500-620

Unit Size: 0.1 mg

Store at 4C in the dark.

[www.novusbio.com](http://www.novusbio.com)



[technical@novusbio.com](mailto:technical@novusbio.com)

### Publications: 7

Protocols, Publications, Related Products, Reviews, Research Tools and Images at:  
[www.novusbio.com/NB500-620](http://www.novusbio.com/NB500-620)

Updated 10/23/2024 v.20.1

Earn rewards for product  
reviews and publications.

Submit a publication at [www.novusbio.com/publications](http://www.novusbio.com/publications)

Submit a review at [www.novusbio.com/reviews/destination/NB500-620](http://www.novusbio.com/reviews/destination/NB500-620)



**NB500-620**

beta-III Tubulin Antibody (TU-20) [FITC]

Product Information	
Unit Size	0.1 mg
Concentration	1.0 mg/ml
Storage	Store at 4C in the dark.
Clonality	Monoclonal
Clone	TU-20
Preservative	0.9% Sodium Azide
Isotype	IgG1
Conjugate	FITC
Purity	Size Exclusion Chromatography
Buffer	PBS (pH 7.4)
Product Description	
Host	Mouse
Gene ID	10381
Gene Symbol	TUBB3
Species	Human, Mouse, Rat, Canine
Reactivity Notes	Please note that this antibody is reactive to Mouse and derived from the same host, Mouse. Mouse-On-Mouse blocking reagent may be needed for IHC and ICC experiments to reduce high background signal. You can find these reagents under catalog numbers PK-2200-NB and MP-2400-NB. Please contact Technical Support if you have any questions. Rat reactivity reported in scientific literature (PMID: 23984759).
Marker	Neuronal Marker
Specificity/Sensitivity	The antibody TU-20 recognizes C-terminal peptide sequence ESESQGPK (aa 441-448) of neuron-specific human betaIII-tubulin.
Immunogen	Peptide (C) 441-448 coupled to maleimide-activated keyhole limpet hemocyanin via cysteine added to the N-terminus of the neuron-specific peptide.
Product Application Details	
Applications	Western Blot, Flow Cytometry, Flow (Intracellular), Immunocytochemistry/ Immunofluorescence, Immunohistochemistry, Immunohistochemistry-Paraffin
Recommended Dilutions	Western Blot 1-2 ug/ml, Flow Cytometry 1-3 ug/ml, Immunohistochemistry 1:10-1:500, Immunocytochemistry/ Immunofluorescence 1:400, Immunohistochemistry-Paraffin 10 ug/ml, Flow (Intracellular) 1-3 ug/ml
Application Notes	For Immunohistochemistry-Paraffin: Use standard ABC technique (DAB+). Purity is > 95% (by SDS-PAGE). Western Blot: reducing conditions



## Images

Immunocytochemistry/Immunofluorescence: beta-III Tubulin Antibody (TU-20) [FITC] [NB500-620] - Immunofluorescence staining of P-19 mouse embryonal carcinoma cell line stimulated to neuronal differentiation by retinoic acid. 2A - Microtubules decorated with neuron-specific anti-betaIII-tubulin (TU-20; red). 2B - Merged image of co-staining with anti-beta-tubulin (TU-06; green). Superposition of red and green colours provided yellow staining. Nuclei were stained with DNA-binding dye (blue).

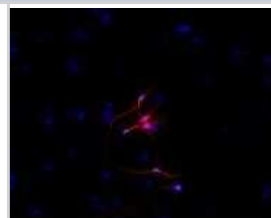
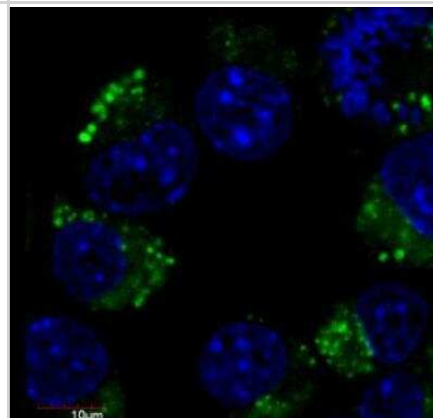


Fig. 2A Immunofluorescence staining (mouse embryonal carcinoma cells)

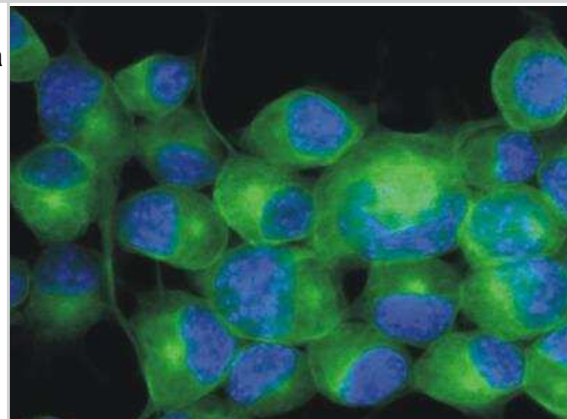


Fig. 2B Immunofluorescence staining (mouse embryonal carcinoma cells)

Immunocytochemistry/Immunofluorescence: beta-III Tubulin Antibody (TU-20) [FITC] [NB500-620] - Immunofluorescence staining of Neuro2a mouse neuroblastoma cell line using anti-betaIII-tubulin (TU-20 FITC, green, 1 ug/ml). Nuclei were stained with DAPI (blue).



Immunocytochemistry/Immunofluorescence: beta-III Tubulin Antibody (TU-20) [FITC] [NB500-620] - Staining of Neuro2a mouse neuroblastoma cell line using anti-betaIII-tubulin (TU-20; green; 3 ug/ml). Nuclei were stained with DAPI (blue).



## Publications

Katsetos CD, Draberova E, Smejkalova B et al. Class III beta-Tubulin and gamma-Tubulin are Co-expressed and form Complexes in Human Glioblastoma Cells *Neurochem Res* 2007-01-01 [PMID: 17406983]

**Details:**

This citation used the FITC version of this antibody.

Jirasek T, Pisarikova E, Viklicky V, Mandys V. Expression of class III beta-tubulin in malignant epithelial tumours: an immunohistochemical study using TU-20 and TuJ-1 antibodies *Folia Histochem Cytobiol* 2007-01-01 [PMID: 17378245]

**Details:**

This citation used the FITC version of this antibody.

Jirasek T, Cipro S, Musilova A et al. Expression of class III beta-tubulin in colorectal carcinomas: an immunohistochemical study using TU-20 & TuJ-1 antibody *Indian J Med Res* 2009-01-01 [PMID: 19287064]

**Details:**

This citation used the FITC version of this antibody.

Peknicova J, Kubatova A, Sulimenko V et al. Differential subcellular distribution of tubulin epitopes in boar spermatozoa: recognition of class III beta-tubulin epitope in sperm tail *Biol Reprod* 2001-09-01 [PMID: 11514327]

**Details:**

This citation used the FITC version of this antibody.

Draberova E, Lukas Z, Ivanyi D et al. Expression of class III beta-tubulin in normal and neoplastic human tissues *Histochem Cell Biol* 1998-03-01 [PMID: 9541471]

**Details:**

This citation used the FITC version of this antibody.

Theodorou E, Dalembert G, Heffelfinger C et al. A high throughput embryonic stem cell screen identifies Oct-2 as a bifunctional regulator of neuronal differentiation *Genes Dev* 2009-03-01 [PMID: 19270158]

**Details:**

This citation used the FITC version of this antibody.

Kukharskyy V, Sulimenko V, Macurek L et al. Complexes of gamma-tubulin with nonreceptor protein tyrosine kinases Src and Fyn in differentiating P19 embryonal carcinoma cells *Exp Cell Res* 2004-08-01 [PMID: 15242776]

**Details:**

This citation used the FITC version of this antibody.





### **Novus Biologicals USA**

10730 E. Briarwood Avenue  
Centennial, CO 80112  
USA  
Phone: 303.730.1950  
Toll Free: 1.888.506.6887  
Fax: 303.730.1966  
nb-customerservice@bio-techne.com

### **Bio-Techne Canada**

21 Canmotor Ave  
Toronto, ON M8Z 4E6  
Canada  
Phone: 905.827.6400  
Toll Free: 855.668.8722  
Fax: 905.827.6402  
canada.inquires@bio-techne.com

### **Bio-Techne Ltd**

19 Barton Lane  
Abingdon Science Park  
Abingdon, OX14 3NB, United Kingdom  
Phone: (44) (0) 1235 529449  
Free Phone: 0800 37 34 15  
Fax: (44) (0) 1235 533420  
info.EMEA@bio-techne.com

### **General Contact Information**

www.novusbio.com  
Technical Support: nb-technical@bio-techne.com  
Orders: nb-customerservice@bio-techne.com  
General: novus@novusbio.com

### **Products Related to NB500-620**

---

NBP1-96849	Mouse IgG1 Isotype Control (MG1) [FITC]
NBP2-22901	Recombinant Human beta-III Tubulin His Protein
1129-ER-050	ErbB2/Her2 [Unconjugated]
NBL1-17440	beta-III Tubulin Overexpression Lysate

---

### **Limitations**

This product is for research use only and is not approved for use in humans or in clinical diagnosis. Primary Antibodies are guaranteed for 1 year from date of receipt.

For more information on our 100% guarantee, please visit [www.novusbio.com/guarantee](http://www.novusbio.com/guarantee)

Earn gift cards/discounts by submitting a review: [www.novusbio.com/reviews/submit/NB500-620](http://www.novusbio.com/reviews/submit/NB500-620)

Earn gift cards/discounts by submitting a publication using this product:  
[www.novusbio.com/publications](http://www.novusbio.com/publications)

