

Product Datasheet

gamma Tubulin Antibody (TU-30) [mFluor Violet 500 SE] NB500-574MFV500

Unit Size: 0.1 ml

Store at 4C in the dark.

www.novusbio.com



technical@novusbio.com

Protocols, Publications, Related Products, Reviews, Research Tools and Images at:
www.novusbio.com/NB500-574MFV500

Updated 9/20/2023 v.20.1

Earn rewards for product
reviews and publications.

Submit a publication at www.novusbio.com/publications

Submit a review at www.novusbio.com/reviews/destination/NB500-574MFV500



NB500-574MFV500

gamma Tubulin Antibody (TU-30) [mFluor Violet 500 SE]

Product Information	
Unit Size	0.1 ml
Concentration	Please see the vial label for concentration. If unlisted please contact technical services.
Storage	Store at 4C in the dark.
Clonality	Monoclonal
Clone	TU-30
Preservative	0.05% Sodium Azide
Isotype	IgG1
Conjugate	mFluor Violet 500 SE
Purity	Protein A purified
Buffer	50mM Sodium Borate

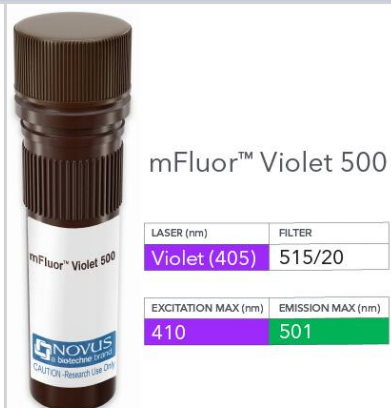
Product Description	
Host	Mouse
Gene ID	7283
Gene Symbol	TUBG1
Species	Human, Mouse, Rat, Porcine, Bovine, Chicken, Plant, Protozoa
Reactivity Notes	Please note that this antibody is reactive to Mouse and derived from the same host, Mouse. Mouse-On-Mouse blocking reagent may be needed for IHC and ICC experiments to reduce high background signal. You can find these reagents under catalog numbers PK-2200-NB and MP-2400-NB. Please contact Technical Support if you have any questions.
Marker	Centrosome Marker
Specificity/Sensitivity	The antibody TU-30 recognizes C-terminal peptide sequence EYHAATRPDYISWGTQ (aa 434-449) of gamma-tubulin, a 48 kDa structural constituent of cytoskeleton and microtubule organizing center (MTOC).
Immunogen	C-terminal peptide of gamma-tubulin conjugated to KLH.

Product Application Details	
Applications	Western Blot, Flow Cytometry, Flow (Intracellular), Immunocytochemistry/Immunofluorescence, Immunohistochemistry-Paraffin
Recommended Dilutions	Western Blot, Flow Cytometry, Immunocytochemistry/Immunofluorescence, Immunohistochemistry-Paraffin, Flow (Intracellular)
Application Notes	Optimal dilution of this antibody should be experimentally determined.



Images

gamma Tubulin Antibody (TU-30) [mFluor Violet 500 SE] - Vial of mFluor Violet 500 conjugated antibody. mFluor Violet 500 is optimally excited at 410 nm by the Violet laser (405 nm) and has an emission maximum of 501 nm.





Novus Biologicals USA

10730 E. Briarwood Avenue
Centennial, CO 80112
USA
Phone: 303.730.1950
Toll Free: 1.888.506.6887
Fax: 303.730.1966
nb-customerservice@bio-techne.com

Bio-Techne Canada

21 Canmotor Ave
Toronto, ON M8Z 4E6
Canada
Phone: 905.827.6400
Toll Free: 855.668.8722
Fax: 905.827.6402
canada.inquires@bio-techne.com

Bio-Techne Ltd

19 Barton Lane
Abingdon Science Park
Abingdon, OX14 3NB, United Kingdom
Phone: (44) (0) 1235 529449
Free Phone: 0800 37 34 15
Fax: (44) (0) 1235 533420
info.EMEA@bio-techne.com

General Contact Information

www.novusbio.com
Technical Support: nb-technical@bio-techne.com
Orders: nb-customerservice@bio-techne.com
General: novus@novusbio.com

Products Related to NB500-574MFV500

NBP1-72534-100ug	Recombinant Human gamma Tubulin His Protein
DY453-05	CXCL1/GRO alpha/KC/CINC-1 [Biotin]
NBL1-17444	gamma Tubulin Overexpression Lysate
MAB1195	beta-III Tubulin Antibody (TuJ-1) [Unconjugated] - Neuron-Specific

Limitations

This product is for research use only and is not approved for use in humans or in clinical diagnosis. Primary Antibodies are guaranteed for 1 year from date of receipt.

For more information on our 100% guarantee, please visit www.novusbio.com/guarantee

Earn gift cards/discounts by submitting a review: www.novusbio.com/reviews/submit/NB500-574MFV500

Earn gift cards/discounts by submitting a publication using this product:
www.novusbio.com/publications

