

Product Datasheet

EMMPRIN/CD147 Antibody (MEM-M6/2) [mFluor Violet 500 SE] NB500-561MFV500

Unit Size: 0.1 ml

Store at 4C in the dark.

www.novusbio.com



technical@novusbio.com

Protocols, Publications, Related Products, Reviews, Research Tools and Images at:
www.novusbio.com/NB500-561MFV500

Updated 9/20/2023 v.20.1

Earn rewards for product reviews and publications.

Submit a publication at www.novusbio.com/publications

Submit a review at www.novusbio.com/reviews/destination/NB500-561MFV500



NB500-561MFV500

EMMPRIN/CD147 Antibody (MEM-M6/2) [mFluor Violet 500 SE]

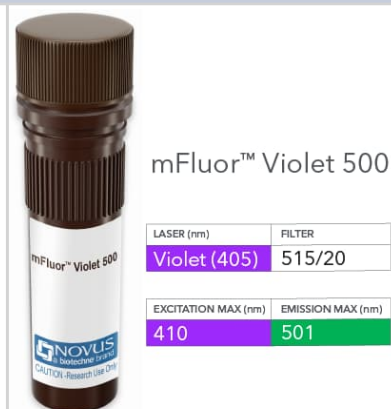
Product Information	
Unit Size	0.1 ml
Concentration	Please see the vial label for concentration. If unlisted please contact technical services.
Storage	Store at 4C in the dark.
Clonality	Monoclonal
Clone	MEM-M6/2
Preservative	0.05% Sodium Azide
Isotype	IgG2b
Conjugate	mFluor Violet 500 SE
Purity	Protein A purified
Buffer	50mM Sodium Borate

Product Description	
Host	Mouse
Gene ID	682
Gene Symbol	BSG
Species	Human, Porcine
Specificity/Sensitivity	The antibody MEM-M6/2 recognizes extracellular Ig domain D1 of CD147 (Neurothelin), a 50-60 kDa type I transmembrane glycoprotein primarily expressed on all leukocytes, red blood cells, platelets and endothelial cells; it is not expressed by resting lymphocytes. The antibody MEM-M6/1 is a high-affinity antibody capable of binding to unstimulated peripheral blood T cells.
Immunogen	A soluble recombinant form of CD147, CD147Rg, which consists of the cDNA coding for the entire extracellular region of CD147 fused to the DNA coding for the hinge region, CH2 and CH3 domain of human IgG1.

Product Application Details	
Applications	Flow Cytometry, Flow (Cell Surface), Immunohistochemistry, Immunohistochemistry-Paraffin, CyTOF-ready
Recommended Dilutions	Flow Cytometry, Immunohistochemistry, Immunohistochemistry-Paraffin, Flow (Cell Surface), CyTOF-ready
Application Notes	Optimal dilution of this antibody should be experimentally determined.

Images

EMMPRIN/CD147 Antibody (MEM-M6/2) [mFluor Violet 500 SE] - Vial of mFluor Violet 500 conjugated antibody. mFluor Violet 500 is optimally excited at 410 nm by the Violet laser (405 nm) and has an emission maximum of 501 nm.





Novus Biologicals USA

10730 E. Briarwood Avenue
Centennial, CO 80112
USA
Phone: 303.730.1950
Toll Free: 1.888.506.6887
Fax: 303.730.1966
nb-customerservice@bio-techne.com

Bio-Techne Canada

21 Canmotor Ave
Toronto, ON M8Z 4E6
Canada
Phone: 905.827.6400
Toll Free: 855.668.8722
Fax: 905.827.6402
canada.inquires@bio-techne.com

Bio-Techne Ltd

19 Barton Lane
Abingdon Science Park
Abingdon, OX14 3NB, United Kingdom
Phone: (44) (0) 1235 529449
Free Phone: 0800 37 34 15
Fax: (44) (0) 1235 533420
info.EMEA@bio-techne.com

General Contact Information

www.novusbio.com
Technical Support: nb-technical@bio-techne.com
Orders: nb-customerservice@bio-techne.com
General: novus@novusbio.com

Products Related to NB500-561MFV500

NBP2-57810PEP	EMMPRIN/CD147 Recombinant Protein Antigen
DVE00	VEGF [HRP]
DEMP00	EMMPRIN/CD147 [HRP]
DMP900	MMP-9 [HRP]

Limitations

This product is for research use only and is not approved for use in humans or in clinical diagnosis. Primary Antibodies are guaranteed for 1 year from date of receipt.

For more information on our 100% guarantee, please visit www.novusbio.com/guarantee

Earn gift cards/discounts by submitting a review: www.novusbio.com/reviews/submit/NB500-561MFV500

Earn gift cards/discounts by submitting a publication using this product:
www.novusbio.com/publications

