

Product Datasheet

EMMPRIN/CD147 Antibody (MEM-M6/2) - BSA Free NB500-561

Unit Size: 0.1 mg

Store at 4C. Do not freeze.

www.novusbio.com



technical@novusbio.com

Protocols, Publications, Related Products, Reviews, Research Tools and Images at:
www.novusbio.com/NB500-561

Updated 10/23/2024 v.20.1

Earn rewards for product
reviews and publications.

Submit a publication at www.novusbio.com/publications

Submit a review at www.novusbio.com/reviews/destination/NB500-561



NB500-561

EMMPRIN/CD147 Antibody (MEM-M6/2) - BSA Free

Product Information	
Unit Size	0.1 mg
Concentration	1.0 mg/ml
Storage	Store at 4C. Do not freeze.
Clonality	Monoclonal
Clone	MEM-M6/2
Preservative	0.9% Sodium Azide
Isotype	IgG2b
Purity	Protein A purified
Buffer	PBS (pH 7.4)
Target Molecular Weight	60 kDa

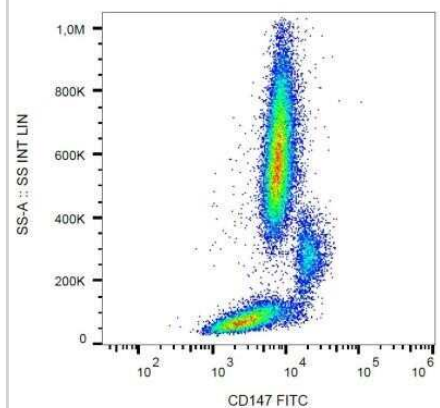
Product Description	
Host	Mouse
Gene ID	682
Gene Symbol	BSG
Species	Human, Porcine
Specificity/Sensitivity	The antibody MEM-M6/2 recognizes extracellular Ig domain D1 of CD147 (Neurothelin), a 50-60 kDa type I transmembrane glycoprotein primarily expressed on all leukocytes, red blood cells, platelets and endothelial cells; it is not expressed by resting lymphocytes. The antibody MEM-M6/1 is a high-affinity antibody capable of binding to unstimulated peripheral blood T cells.
Immunogen	A soluble recombinant form of CD147, CD147Rg, which consists of the cDNA coding for the entire extracellular region of CD147 fused to the DNA coding for the hinge region, CH2 and CH3 domain of human IgG1.

Product Application Details	
Applications	Flow Cytometry, Flow (Cell Surface), Immunohistochemistry, Immunohistochemistry-Paraffin, CyTOF-ready
Recommended Dilutions	Flow Cytometry 4 ug/ml, Immunohistochemistry 1:10-1:500, Immunohistochemistry-Paraffin 10 ug/ml, Flow (Cell Surface), CyTOF-ready
Application Notes	This antibody is Cytof ready.

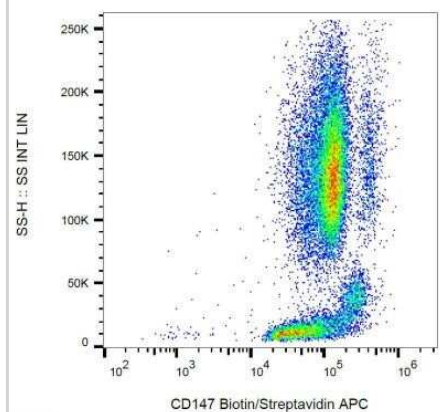


Images

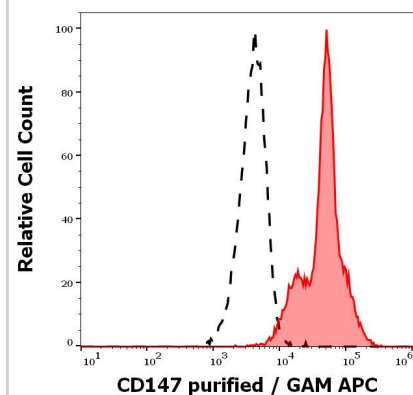
Flow (Cell Surface): EMMPRIN/CD147 Antibody (MEM-M6/2) [NB500-561] - Flow Cytometry: EMMPRIN/CD147 Antibody (MEM-M6/2) [FITC] [NBP1-44585] - Surface staining of human peripheral blood with anti-human CD147 (MEM-M6/1) FITC. Image using the FITC form of this antibody.



Flow Cytometry: EMMPRIN/CD147 Antibody (MEM-M6/2) [NB500-561] - Flow Cytometry: EMMPRIN/CD147 Antibody (MEM-M6/2) [FITC] [NBP1-44585] - Surface staining of human peripheral blood with anti-human CD147 (MEM-M6/1) biotin. Image using the FITC form of this antibody.



Surface staining pattern of human peripheral whole blood stained using anti-human CD147 (MEM-M6/2) purified antibody (concentration in sample 0.6 ug/ml, GAM APC).





Novus Biologicals USA

10730 E. Briarwood Avenue
Centennial, CO 80112
USA
Phone: 303.730.1950
Toll Free: 1.888.506.6887
Fax: 303.730.1966
nb-customerservice@bio-techne.com

Bio-Techne Canada

21 Canmotor Ave
Toronto, ON M8Z 4E6
Canada
Phone: 905.827.6400
Toll Free: 855.668.8722
Fax: 905.827.6402
canada.inquires@bio-techne.com

Bio-Techne Ltd

19 Barton Lane
Abingdon Science Park
Abingdon, OX14 3NB, United Kingdom
Phone: (44) (0) 1235 529449
Free Phone: 0800 37 34 15
Fax: (44) (0) 1235 533420
info.EMEA@bio-techne.com

General Contact Information

www.novusbio.com
Technical Support: nb-technical@bio-techne.com
Orders: nb-customerservice@bio-techne.com
General: novus@novusbio.com

Products Related to NB500-561

NBL1-08036	EMMPRIN/CD147 Overexpression Lysate
HAF007	Goat anti-Mouse IgG Secondary Antibody [HRP]
NB720-B	Rabbit anti-Mouse IgG (H+L) Secondary Antibody [Biotin]
NBP2-27231	Mouse IgG2b Isotype Control (MPC-11)

Limitations

This product is for research use only and is not approved for use in humans or in clinical diagnosis. Primary Antibodies are guaranteed for 1 year from date of receipt.

For more information on our 100% guarantee, please visit www.novusbio.com/guarantee

Earn gift cards/discounts by submitting a review: www.novusbio.com/reviews/submit/NB500-561

Earn gift cards/discounts by submitting a publication using this product:
www.novusbio.com/publications

