

Product Datasheet

IGF-II R/IGF2R Antibody (MEM-238) [mFluor Violet 500 SE] NB500-464MFV500

Unit Size: 0.1 ml

Store at 4C in the dark.

www.novusbio.com



technical@novusbio.com

Protocols, Publications, Related Products, Reviews, Research Tools and Images at:
www.novusbio.com/NB500-464MFV500

Updated 9/20/2023 v.20.1

Earn rewards for product
reviews and publications.

Submit a publication at www.novusbio.com/publications

Submit a review at www.novusbio.com/reviews/destination/NB500-464MFV500



NB500-464MFV500

IGF-II R/IGF2R Antibody (MEM-238) [mFluor Violet 500 SE]

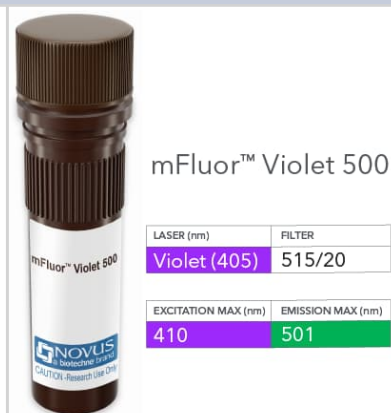
Product Information	
Unit Size	0.1 ml
Concentration	Please see the vial label for concentration. If unlisted please contact technical services.
Storage	Store at 4C in the dark.
Clonality	Monoclonal
Clone	MEM-238
Preservative	0.05% Sodium Azide
Isotype	IgG1
Conjugate	mFluor Violet 500 SE
Purity	Protein A purified
Buffer	50mM Sodium Borate

Product Description	
Host	Mouse
Gene ID	3482
Gene Symbol	IGF2R
Species	Human, Primate
Marker	Late Endosome Marker
Specificity/Sensitivity	The antibody MEM-238 recognizes an epitope between domains 2 and 5 of CD222 (IGF2 receptor), a ubiquitously expressed 250 kDa multifunctional type I transmembrane protein. The majority of CD222 is found in the late endosomal/prelysosomal compartment, 5-10% in the plasma membrane and the truncated (220 kDa) form of CD222 is present in human and bovine serum.
Immunogen	Recombinant Vaccinia virus encoding CD222.

Product Application Details	
Applications	Western Blot, Flow Cytometry, Immunoprecipitation, CyTOF-ready
Recommended Dilutions	Western Blot, Flow Cytometry, Immunoprecipitation, CyTOF-ready
Application Notes	Optimal dilution of this antibody should be experimentally determined.

Images

IGF-II R/IGF2R Antibody (MEM-238) [mFluor Violet 500 SE] - Vial of mFluor Violet 500 conjugated antibody. mFluor Violet 500 is optimally excited at 410 nm by the Violet laser (405 nm) and has an emission maximum of 501 nm.





Novus Biologicals USA

10730 E. Briarwood Avenue
Centennial, CO 80112
USA
Phone: 303.730.1950
Toll Free: 1.888.506.6887
Fax: 303.730.1966
nb-customerservice@bio-techne.com

Bio-Techne Canada

21 Canmotor Ave
Toronto, ON M8Z 4E6
Canada
Phone: 905.827.6400
Toll Free: 855.668.8722
Fax: 905.827.6402
canada.inquires@bio-techne.com

Bio-Techne Ltd

19 Barton Lane
Abingdon Science Park
Abingdon, OX14 3NB, United Kingdom
Phone: (44) (0) 1235 529449
Free Phone: 0800 37 34 15
Fax: (44) (0) 1235 533420
info.EMEA@bio-techne.com

General Contact Information

www.novusbio.com
Technical Support: nb-technical@bio-techne.com
Orders: nb-customerservice@bio-techne.com
General: novus@novusbio.com

Products Related to NB500-464MFV500

NBP1-84598PEP	IGF-II R/IGF2R Recombinant Protein Antigen
236-EG-200	EGF [Unconjugated]
DY2447	IGF-II R/IGF2R [Biotin]
291-G1-200	IGF-I/IGF-1 [Unconjugated]

Limitations

This product is for research use only and is not approved for use in humans or in clinical diagnosis. Primary Antibodies are guaranteed for 1 year from date of receipt.

For more information on our 100% guarantee, please visit www.novusbio.com/guarantee

Earn gift cards/discounts by submitting a review: www.novusbio.com/reviews/submit/NB500-464MFV500

Earn gift cards/discounts by submitting a publication using this product:
www.novusbio.com/publications

