

# Product Datasheet

## IGF-II R/IGF2R Antibody (MEM-238) - BSA Free NB500-464

Unit Size: 0.1 mg

Store at 4C. Do not freeze.

[www.novusbio.com](http://www.novusbio.com)



[technical@novusbio.com](mailto:technical@novusbio.com)

### Publications: 2

Protocols, Publications, Related Products, Reviews, Research Tools and Images at:  
[www.novusbio.com/NB500-464](http://www.novusbio.com/NB500-464)

Updated 10/23/2024 v.20.1

Earn rewards for product  
reviews and publications.

Submit a publication at [www.novusbio.com/publications](http://www.novusbio.com/publications)

Submit a review at [www.novusbio.com/reviews/destination/NB500-464](http://www.novusbio.com/reviews/destination/NB500-464)



**NB500-464**

IGF-II R/IGF2R Antibody (MEM-238) - BSA Free

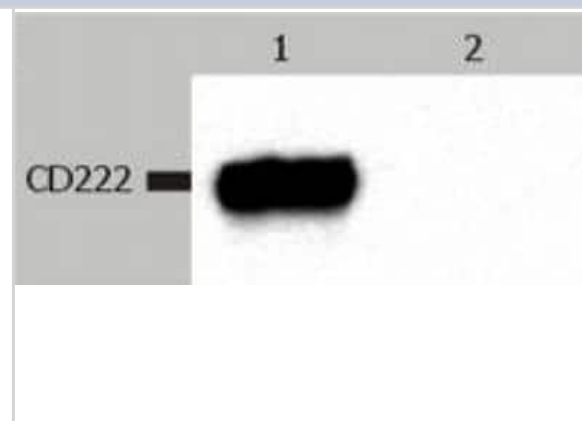
Product Information	
Unit Size	0.1 mg
Concentration	1.0 mg/ml
Storage	Store at 4C. Do not freeze.
Clonality	Monoclonal
Clone	MEM-238
Preservative	0.9% Sodium Azide
Isotype	IgG1
Purity	Protein A purified
Buffer	PBS (pH 7.4)
Target Molecular Weight	250 kDa

Product Description	
Host	Mouse
Gene ID	3482
Gene Symbol	IGF2R
Species	Human, Primate
Marker	Late Endosome Marker
Specificity/Sensitivity	The antibody MEM-238 recognizes an epitope between domains 2 and 5 of CD222 (IGF2 receptor), a ubiquitously expressed 250 kDa multifunctional type I transmembrane protein. The majority of CD222 is found in the late endosomal/prelysosomal compartment, 5-10% in the plasma membrane and the truncated (220 kDa) form of CD222 is present in human and bovine serum.
Immunogen	Recombinant Vaccinia virus encoding CD222.

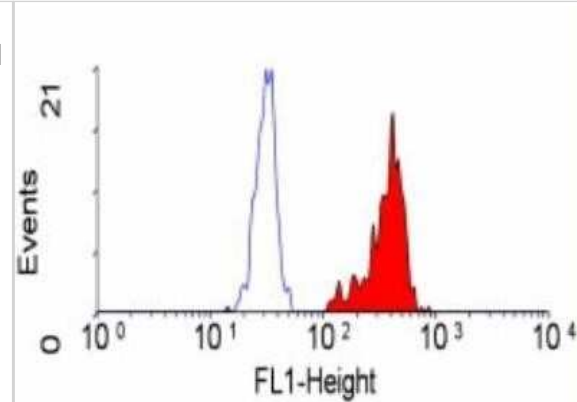
Product Application Details	
Applications	Western Blot, Flow Cytometry, Immunoprecipitation, CyTOF-ready
Recommended Dilutions	Western Blot 1:1000, Flow Cytometry 2-6 ug/ml, Immunoprecipitation 1:10-1:500, CyTOF-ready
Application Notes	Western Blot - Non-reducing conditions. This antibody is CyTOF ready.

**Images**

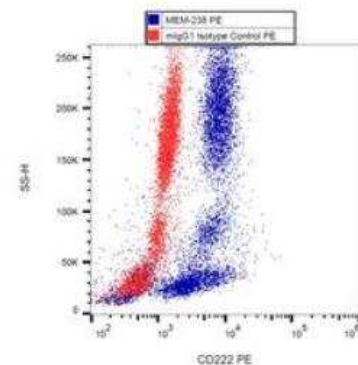
Western Blot: IGF-II R/Mannose 6 Phosphate Receptor (Cation independent) Antibody (MEM-238) [NB500-464] - Fig. 1. Western Blotting analysis (non-reducing conditions) of CD222 in whole cell lysate of JURKAT human peripheral blood T cell leukemia cell line. Lane 1: immunostaining with anti-CD222 (MEM-238) Lane 2: immunostaining with Isotype mouse IgG1 control (PPV-06).



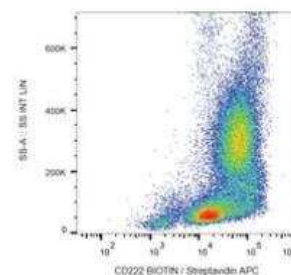
Flow Cytometry: IGF-II R/Mannose 6 Phosphate Receptor (Cation independent) Antibody (MEM-238) [NB500-464] - Flow Cytometry: IGF-II R/Mannose 6 Phosphate Receptor (Cation independent) Antibody (MEM-238) [FITC] [NB100-63599] - Mannose 6 Phosphate Receptor (Cation independent) Antibody (MEM-238)[NB100-63599]- Staining human peripheral blood monocytes following permeabilisation with Leucoperm (Fix & Perm) (BUF09). Image using the FITC form of this antibody.



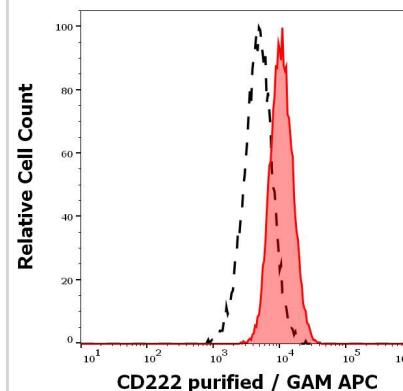
Flow Cytometry: IGF-II R/Mannose 6 Phosphate Receptor (Cation independent) Antibody (MEM-238) [NB500-464] - Intracellular staining of human peripheral blood with anti-CD222 (MEM-238) PE.



Flow Cytometry: IGF-II R/Mannose 6 Phosphate Receptor (Cation independent) Antibody (MEM-238) [NB500-464] - Surface staining of human peripheral blood with anti-CD222 (MEM-238) biotin, streptavidin-APC



Surface staining pattern of human peripheral whole blood stained using anti-human CD222 (MEM-238) purified antibody (concentration in sample 2 ug/ml) GAM APC.



## Publications

Leksa V, Godar S, Cebecauer M et al. The N terminus of mannose 6-phosphate/insulin-like growth factor 2 receptor in regulation of fibrinolysis and cell migration J Biol Chem 2002-10-25 [PMID: 12189157]

### Details:

This citation used the FITC version of this antibody.

EI-Shewy, H M, M-H Lee et al. The Insulin-like Growth Factor Type 1 Insulin-like Growth Factor Type 2/Mannose-6-phosphate Receptors Independently Regulate ERK1/2 Activity in HEK293 Cells. 282: 26150-26157. 2007-01-01 [PMID: 17620336]





### **Novus Biologicals USA**

10730 E. Briarwood Avenue  
Centennial, CO 80112  
USA  
Phone: 303.730.1950  
Toll Free: 1.888.506.6887  
Fax: 303.730.1966  
nb-customerservice@bio-techne.com

### **Bio-Techne Canada**

21 Canmotor Ave  
Toronto, ON M8Z 4E6  
Canada  
Phone: 905.827.6400  
Toll Free: 855.668.8722  
Fax: 905.827.6402  
canada.inquires@bio-techne.com

### **Bio-Techne Ltd**

19 Barton Lane  
Abingdon Science Park  
Abingdon, OX14 3NB, United Kingdom  
Phone: (44) (0) 1235 529449  
Free Phone: 0800 37 34 15  
Fax: (44) (0) 1235 533420  
info.EMEA@bio-techne.com

### **General Contact Information**

www.novusbio.com  
Technical Support: nb-technical@bio-techne.com  
Orders: nb-customerservice@bio-techne.com  
General: novus@novusbio.com

### **Products Related to NB500-464**

---

HAF007	Goat anti-Mouse IgG Secondary Antibody [HRP]
NB720-B	Rabbit anti-Mouse IgG (H+L) Secondary Antibody [Biotin]
NBP1-97005-0.5mg	Mouse IgG1 Isotype Control (MG1)
NB100-63599-100Tests	IGF-II R/IGF2R Antibody (MEM-238) [FITC]

---

### **Limitations**

This product is for research use only and is not approved for use in humans or in clinical diagnosis. Primary Antibodies are guaranteed for 1 year from date of receipt.

For more information on our 100% guarantee, please visit [www.novusbio.com/guarantee](http://www.novusbio.com/guarantee)

Earn gift cards/discounts by submitting a review: [www.novusbio.com/reviews/submit/NB500-464](http://www.novusbio.com/reviews/submit/NB500-464)

Earn gift cards/discounts by submitting a publication using this product:  
[www.novusbio.com/publications](http://www.novusbio.com/publications)

