

Product Datasheet

Endoglin/CD105 Antibody (MEM-226) [PerCP] NB500-452PCP

Unit Size: 0.1 ml

Store at 4C in the dark.

www.novusbio.com



technical@novusbio.com

Protocols, Publications, Related Products, Reviews, Research Tools and Images at:
www.novusbio.com/NB500-452PCP

Updated 10/23/2024 v.20.1

Earn rewards for product
reviews and publications.

Submit a publication at www.novusbio.com/publications

Submit a review at www.novusbio.com/reviews/destination/NB500-452PCP



NB500-452PCP

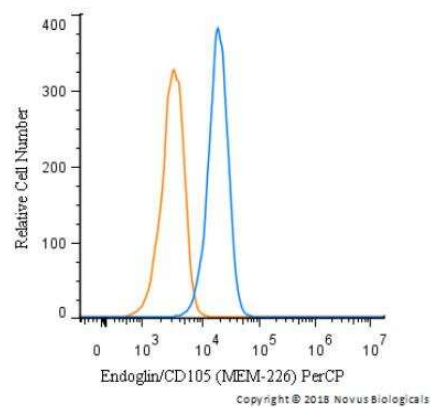
Endoglin/CD105 Antibody (MEM-226) [PerCP]

Product Information	
Unit Size	0.1 ml
Concentration	Please see the vial label for concentration. If unlisted please contact technical services.
Storage	Store at 4C in the dark.
Clonality	Monoclonal
Clone	MEM-226
Preservative	0.05% Sodium Azide
Isotype	IgG2a
Conjugate	PerCP
Purity	Protein A purified
Buffer	PBS
Product Description	
Host	Mouse
Gene ID	2022
Gene Symbol	ENG
Species	Human, Rat
Marker	Neo-endothelial Cells Marker
Specificity/Sensitivity	The antibody MEM-226 reacts with CD105 (Endoglin), a 90 kDa type I homodimerizing membrane glycoprotein expressed on vascular endothelial cells (small and large vessels), activated monocytes and tissue macrophages, stromal cells of certain tissues including bone marrow, pre-B lymphocytes in fetal marrow and erythroid precursors in fetal and adult bone marrow; it is also present on syncytiotrophoblast on placenta throughout pregnancy.
Immunogen	Recombinant full length protein (Human). Expressed in vaccinia virus containing CD105 cDNA.
Product Application Details	
Applications	Western Blot, Flow Cytometry, Flow (Cell Surface), Immunoprecipitation, CyTOF-ready
Recommended Dilutions	Western Blot, Flow Cytometry, Immunoprecipitation, Flow (Cell Surface), CyTOF-ready
Application Notes	Optimal dilution of this antibody should be experimentally determined.



Images

Flow Cytometry: Endoglin/CD105 Antibody (MEM-226) [PerCP] [NB500-452PCP] - A cell surface stain was performed on HeLa cells with Endoglin/CD105 Antibody (MEM-226) NB500-452PCP (blue) and a matched isotype control (orange). Cells were incubated in an antibody dilution of 5 ug/mL for 20 minutes at room temperature. Both antibodies were conjugated to PerCP.





Novus Biologicals USA

10730 E. Briarwood Avenue
Centennial, CO 80112
USA
Phone: 303.730.1950
Toll Free: 1.888.506.6887
Fax: 303.730.1966
nb-customerservice@bio-techne.com

Bio-Techne Canada

21 Canmotor Ave
Toronto, ON M8Z 4E6
Canada
Phone: 905.827.6400
Toll Free: 855.668.8722
Fax: 905.827.6402
canada.inquires@bio-techne.com

Bio-Techne Ltd

19 Barton Lane
Abingdon Science Park
Abingdon, OX14 3NB, United Kingdom
Phone: (44) (0) 1235 529449
Free Phone: 0800 37 34 15
Fax: (44) (0) 1235 533420
info.EMEA@bio-techne.com

General Contact Information

www.novusbio.com
Technical Support: nb-technical@bio-techne.com
Orders: nb-customerservice@bio-techne.com
General: novus@novusbio.com

Products Related to NB500-452PCP

NBP2-34493PEP	Endoglin/CD105 Recombinant Protein Antigen
DVE00	VEGF [HRP]
DNDG00	Endoglin/CD105 [HRP]
AF3628	CD31/PECAM-1 Antibody [Unconjugated]

Limitations

This product is for research use only and is not approved for use in humans or in clinical diagnosis. Primary Antibodies are guaranteed for 1 year from date of receipt.

For more information on our 100% guarantee, please visit www.novusbio.com/guarantee

Earn gift cards/discounts by submitting a review: www.novusbio.com/reviews/submit/NB500-452PCP

Earn gift cards/discounts by submitting a publication using this product:
www.novusbio.com/publications

