

# Product Datasheet

## Endoglin/CD105 Antibody (MEM-226) [Alexa Fluor® 647] NB500-452AF647

Unit Size: 0.1 ml

Store at 4C in the dark.

[www.novusbio.com](http://www.novusbio.com)



[technical@novusbio.com](mailto:technical@novusbio.com)

Protocols, Publications, Related Products, Reviews, Research Tools and Images at:  
[www.novusbio.com/NB500-452AF647](http://www.novusbio.com/NB500-452AF647)

Updated 10/23/2024 v.20.1

Earn rewards for product  
reviews and publications.

Submit a publication at [www.novusbio.com/publications](http://www.novusbio.com/publications)

Submit a review at [www.novusbio.com/reviews/destination/NB500-452AF647](http://www.novusbio.com/reviews/destination/NB500-452AF647)



**NB500-452AF647**

Endoglin/CD105 Antibody (MEM-226) [Alexa Fluor® 647]

Product Information	
Unit Size	0.1 ml
Concentration	Please see the vial label for concentration. If unlisted please contact technical services.
Storage	Store at 4C in the dark.
Clonality	Monoclonal
Clone	MEM-226
Preservative	0.05% Sodium Azide
Isotype	IgG2a
Conjugate	Alexa Fluor 647
Purity	Protein A purified
Buffer	50mM Sodium Borate
Product Description	
Host	Mouse
Gene ID	2022
Gene Symbol	ENG
Species	Human, Rat
Marker	Neo-endothelial Cells Marker
Specificity/Sensitivity	The antibody MEM-226 reacts with CD105 (Endoglin), a 90 kDa type I homodimerizing membrane glycoprotein expressed on vascular endothelial cells (small and large vessels), activated monocytes and tissue macrophages, stromal cells of certain tissues including bone marrow, pre-B lymphocytes in fetal marrow and erythroid precursors in fetal and adult bone marrow; it is also present on syncytiotrophoblast on placenta throughout pregnancy.
Immunogen	Recombinant full length protein (Human). Expressed in vaccinia virus containing CD105 cDNA.
Notes	Alexa Fluor (R) products are provided under an intellectual property license from Life Technologies Corporation. The purchase of this product conveys to the buyer the non-transferable right to use the purchased product and components of the product only in research conducted by the buyer (whether the buyer is an academic or for-profit entity). The sale of this product is expressly conditioned on the buyer not using the product or its components, or any materials made using the product or its components, in any activity to generate revenue, which may include, but is not limited to use of the product or its components: (i) in manufacturing; (ii) to provide a service, information, or data in return for payment; (iii) for therapeutic, diagnostic or prophylactic purposes; or (iv) for resale, regardless of whether they are resold for use in research. For information on purchasing a license to this product for purposes other than as described above, contact Life Technologies Corporation, 5791 Van Allen Way, Carlsbad, CA 92008 USA or <a href="mailto:outlicensing@lifetech.com">outlicensing@lifetech.com</a> . This conjugate is made on demand. Actual recovery may vary from the stated volume of this product. The volume will be greater than or equal to the unit size stated on the datasheet.

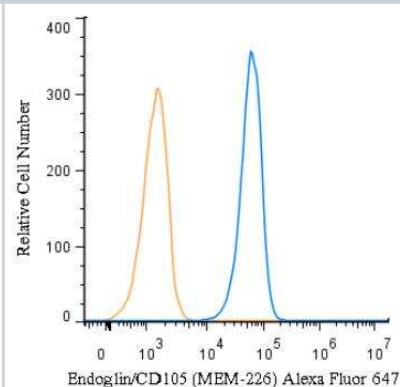


**Product Application Details**

<b>Applications</b>	Western Blot, Flow Cytometry, Flow (Cell Surface), Immunoprecipitation, CyTOF-ready
<b>Recommended Dilutions</b>	Western Blot, Flow Cytometry, Immunoprecipitation, Flow (Cell Surface), CyTOF-ready

**Images**

Flow Cytometry: Endoglin/CD105 Antibody (MEM-226) [Alexa Fluor 647] [NB500-452AF647] - A cell surface stain was performed on HeLa cells with Endoglin/CD105 Antibody (MEM-226) NB500-452AF647 (blue) and a matched isotype control(orange). Cells were incubated in an antibody dilution of 5 ug/mL for 20 minutes at room temperature. Both antibodies were conjugated to Alexa Fluor 647.



Copyright © 2018 Novus Biologicals



### **Novus Biologicals USA**

10730 E. Briarwood Avenue  
Centennial, CO 80112  
USA  
Phone: 303.730.1950  
Toll Free: 1.888.506.6887  
Fax: 303.730.1966  
nb-customerservice@bio-techne.com

### **Bio-Techne Canada**

21 Canmotor Ave  
Toronto, ON M8Z 4E6  
Canada  
Phone: 905.827.6400  
Toll Free: 855.668.8722  
Fax: 905.827.6402  
canada.inquires@bio-techne.com

### **Bio-Techne Ltd**

19 Barton Lane  
Abingdon Science Park  
Abingdon, OX14 3NB, United Kingdom  
Phone: (44) (0) 1235 529449  
Free Phone: 0800 37 34 15  
Fax: (44) (0) 1235 533420  
info.EMEA@bio-techne.com

### **General Contact Information**

www.novusbio.com  
Technical Support: nb-technical@bio-techne.com  
Orders: nb-customerservice@bio-techne.com  
General: novus@novusbio.com

### **Products Related to NB500-452AF647**

---

IC003R	Mouse IgG2a Isotype Control (20102) [Alexa Fluor® 647]
NB500-452AF700	Endoglin/CD105 Antibody (MEM-226) [Alexa Fluor® 700]
NBP1-91212PEP	Endoglin/CD105 Recombinant Protein Antigen
DVE00	VEGF [HRP]

---

### **Limitations**

This product is for research use only and is not approved for use in humans or in clinical diagnosis. Primary Antibodies are guaranteed for 1 year from date of receipt.

For more information on our 100% guarantee, please visit [www.novusbio.com/guarantee](http://www.novusbio.com/guarantee)

Earn gift cards/discounts by submitting a review: [www.novusbio.com/reviews/submit/NB500-452AF647](http://www.novusbio.com/reviews/submit/NB500-452AF647)

Earn gift cards/discounts by submitting a publication using this product:  
[www.novusbio.com/publications](http://www.novusbio.com/publications)

