

# Product Datasheet

## Beta-endorphin Antibody (B31.15) - BSA Free NB500-414

Unit Size: 0.1 mg

Store at 4C. Do not freeze.

[www.novusbio.com](http://www.novusbio.com)



[technical@novusbio.com](mailto:technical@novusbio.com)

Protocols, Publications, Related Products, Reviews, Research Tools and Images at:  
[www.novusbio.com/NB500-414](http://www.novusbio.com/NB500-414)

Updated 10/23/2024 v.20.1

Earn rewards for product  
reviews and publications.

Submit a publication at [www.novusbio.com/publications](http://www.novusbio.com/publications)

Submit a review at [www.novusbio.com/reviews/destination/NB500-414](http://www.novusbio.com/reviews/destination/NB500-414)



**NB500-414**

Beta-endorphin Antibody (B31.15) - BSA Free

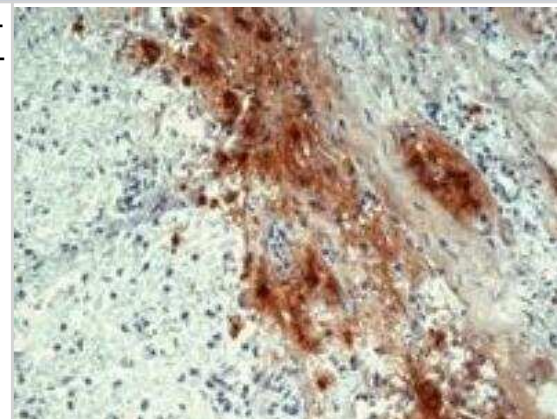
Product Information	
Unit Size	0.1 mg
Concentration	1.0 mg/ml
Storage	Store at 4C. Do not freeze.
Clonality	Monoclonal
Clone	B31.15
Preservative	0.9% Sodium Azide
Isotype	IgG1
Purity	Protein A purified
Buffer	PBS (pH 7.4)

Product Description	
Host	Mouse
Gene ID	5443
Gene Symbol	POMC
Species	Human
Specificity/Sensitivity	The antibody B31.15 reacts with human beta Endorphin, an endogenous opiate derived from ACTH gene. ACTH (Corticotropin; human 39 aa) is synthesized by the anterior pituitary gland and stimulates the adrenal cortex; 6 hormones are derived from one ACTH gene: ACTH, lipotropin, alpha-MSH, beta-MSH, endorphin, and one other.
Immunogen	Human beta Endorphin (full length native protein).

Product Application Details	
Applications	Immunohistochemistry, Immunohistochemistry-Frozen, Immunohistochemistry-Paraffin
Recommended Dilutions	Immunohistochemistry 10-20 ug/ml, Immunohistochemistry-Paraffin 10 ug/ml, Immunohistochemistry-Frozen 1:200
Application Notes	Purity is > 95% (by SDS-PAGE). Immunohistochemistry-Paraffin sections: Staining technique: Standard ABC technique (DAB+) Pretreatment: Heat retrieval (microwave oven) Incubation: overnight at 4oC

**Images**

Immunohistochemistry: Beta-endorphin Antibody (B31.15) [NB500-414] - Staining of human pituitary gland (frozen sections) with anti-human Beta-endorphin (B31.15).





### **Novus Biologicals USA**

10730 E. Briarwood Avenue  
Centennial, CO 80112  
USA  
Phone: 303.730.1950  
Toll Free: 1.888.506.6887  
Fax: 303.730.1966  
nb-customerservice@bio-techne.com

### **Bio-Techne Canada**

21 Canmotor Ave  
Toronto, ON M8Z 4E6  
Canada  
Phone: 905.827.6400  
Toll Free: 855.668.8722  
Fax: 905.827.6402  
canada.inquires@bio-techne.com

### **Bio-Techne Ltd**

19 Barton Lane  
Abingdon Science Park  
Abingdon, OX14 3NB, United Kingdom  
Phone: (44) (0) 1235 529449  
Free Phone: 0800 37 34 15  
Fax: (44) (0) 1235 533420  
info.EMEA@bio-techne.com

### **General Contact Information**

www.novusbio.com  
Technical Support: nb-technical@bio-techne.com  
Orders: nb-customerservice@bio-techne.com  
General: novus@novusbio.com

### **Products Related to NB500-414**

---

HAF007	Goat anti-Mouse IgG Secondary Antibody [HRP]
NB720-B	Rabbit anti-Mouse IgG (H+L) Secondary Antibody [Biotin]
NBP1-97005-0.5mg	Mouse IgG1 Isotype Control (MG1)
210-TA-005	TNF-alpha [Unconjugated]

---

### **Limitations**

This product is for research use only and is not approved for use in humans or in clinical diagnosis. Primary Antibodies are guaranteed for 1 year from date of receipt.

For more information on our 100% guarantee, please visit [www.novusbio.com/guarantee](http://www.novusbio.com/guarantee)

Earn gift cards/discounts by submitting a review: [www.novusbio.com/reviews/submit/NB500-414](http://www.novusbio.com/reviews/submit/NB500-414)

Earn gift cards/discounts by submitting a publication using this product:  
[www.novusbio.com/publications](http://www.novusbio.com/publications)

