

# Product Datasheet

## HLA DR/DP Antibody (HL-38) [FITC] NB500-407

Unit Size: 100 Tests

Store at 4C in the dark.

[www.novusbio.com](http://www.novusbio.com)



[technical@novusbio.com](mailto:technical@novusbio.com)

Protocols, Publications, Related Products, Reviews, Research Tools and Images at:  
[www.novusbio.com/NB500-407](http://www.novusbio.com/NB500-407)

Updated 10/23/2024 v.20.1

Earn rewards for product  
reviews and publications.

Submit a publication at [www.novusbio.com/publications](http://www.novusbio.com/publications)

Submit a review at [www.novusbio.com/reviews/destination/NB500-407](http://www.novusbio.com/reviews/destination/NB500-407)



**NB500-407****HLA DR/DP Antibody (HL-38) [FITC]**

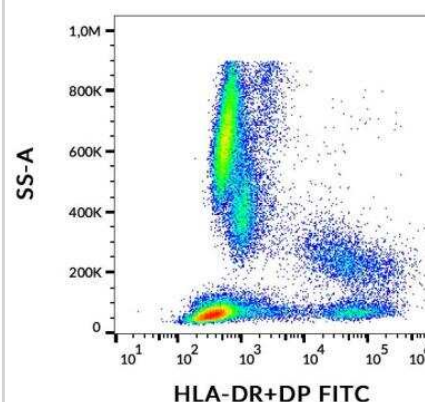
<b>Product Information</b>	
<b>Unit Size</b>	100 Tests
<b>Concentration</b>	Please see the vial label for concentration. If unlisted please contact technical services.
<b>Storage</b>	Store at 4C in the dark.
<b>Clonality</b>	Monoclonal
<b>Clone</b>	HL-38
<b>Preservative</b>	0.9% Sodium Azide
<b>Isotype</b>	IgG2a
<b>Conjugate</b>	FITC
<b>Purity</b>	Size Exclusion Chromatography
<b>Buffer</b>	PBS and 0.2% (w/v) high grade BSA (protease free)

<b>Product Description</b>	
<b>Host</b>	Mouse
<b>Gene ID</b>	3122
<b>Gene Symbol</b>	HLA-DRA
<b>Species</b>	Human, Porcine
<b>Specificity/Sensitivity</b>	The antibody HL-38 recognizes common epitope on beta-chain of human HLA-DR and HLA-DP. DR and DP are the isotypes of human MHC Class II molecules expressed on antigen-presenting cells (APC; dendritic cells, B lymphocytes, monocytes, macrophages).
<b>Immunogen</b>	Raji Burkitt's lymphoma cell line

<b>Product Application Details</b>	
<b>Applications</b>	Western Blot, Flow Cytometry, Immunohistochemistry, Immunohistochemistry-Paraffin, Immunoprecipitation
<b>Recommended Dilutions</b>	Western Blot 1:100-1:2000, Flow Cytometry, Immunohistochemistry 1:10-1:500, Immunoprecipitation 1:10-1:500, Immunohistochemistry-Paraffin 1:10-1:500
<b>Application Notes</b>	The reagent is designed for Flow Cytometry analysis of human blood cells using 20 ul reagent / 100 ul of whole blood or 10 <sup>6</sup> cells in a suspension.

**Images**

Flow Cytometry: HLA DR/DP Antibody (HL-38) [FITC] [NB500-407] - Surface staining of human peripheral blood with anti-HLA-DR+DP (HL-38) FITC.





### **Novus Biologicals USA**

10730 E. Briarwood Avenue  
Centennial, CO 80112  
USA  
Phone: 303.730.1950  
Toll Free: 1.888.506.6887  
Fax: 303.730.1966  
nb-customerservice@bio-techne.com

### **Bio-Techne Canada**

21 Canmotor Ave  
Toronto, ON M8Z 4E6  
Canada  
Phone: 905.827.6400  
Toll Free: 855.668.8722  
Fax: 905.827.6402  
canada.inquires@bio-techne.com

### **Bio-Techne Ltd**

19 Barton Lane  
Abingdon Science Park  
Abingdon, OX14 3NB, United Kingdom  
Phone: (44) (0) 1235 529449  
Free Phone: 0800 37 34 15  
Fax: (44) (0) 1235 533420  
info.EMEA@bio-techne.com

### **General Contact Information**

www.novusbio.com  
Technical Support: nb-technical@bio-techne.com  
Orders: nb-customerservice@bio-techne.com  
General: novus@novusbio.com

### **Products Related to NB500-407**

---

NBP1-96848	Mouse IgG2a Isotype Control (M2A) [FITC]
NB500-406UV	HLA DR/DP Antibody (HL-38) [DyLight 350]
210-TA-005	TNF-alpha [Unconjugated]
M6000B-1	IL-6 [HRP]

---

### **Limitations**

This product is for research use only and is not approved for use in humans or in clinical diagnosis. Primary Antibodies are guaranteed for 1 year from date of receipt.

For more information on our 100% guarantee, please visit [www.novusbio.com/guarantee](http://www.novusbio.com/guarantee)

Earn gift cards/discounts by submitting a review: [www.novusbio.com/reviews/submit/NB500-407](http://www.novusbio.com/reviews/submit/NB500-407)

Earn gift cards/discounts by submitting a publication using this product:  
[www.novusbio.com/publications](http://www.novusbio.com/publications)

