

Product Datasheet

Integrin beta 2/CD18 Antibody (MEM-48) [FITC] NB500-380

Unit Size: 100 Tests

Store at 4C in the dark.

www.novusbio.com



technical@novusbio.com

Protocols, Publications, Related Products, Reviews, Research Tools and Images at:
www.novusbio.com/NB500-380

Updated 10/23/2024 v.20.1

Earn rewards for product
reviews and publications.

Submit a publication at www.novusbio.com/publications

Submit a review at www.novusbio.com/reviews/destination/NB500-380



NB500-380**Integrin beta 2/CD18 Antibody (MEM-48) [FITC]**

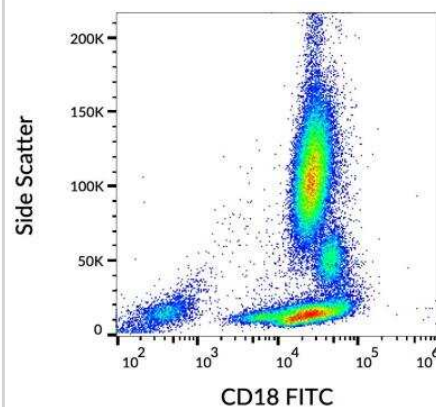
Product Information	
Unit Size	100 Tests
Concentration	Please see the vial label for concentration. If unlisted please contact technical services.
Storage	Store at 4C in the dark.
Clonality	Monoclonal
Clone	MEM-48
Preservative	0.9% Sodium Azide
Isotype	IgG1
Conjugate	FITC
Purity	Size Exclusion Chromatography
Buffer	PBS and 0.2% (w/v) high grade BSA (protease free)
Target Molecular Weight	95 kDa

Product Description	
Host	Mouse
Gene ID	3689
Gene Symbol	ITGB2
Species	Human
Specificity/Sensitivity	The antibody MEM-48 recognizes an epitope involving residues 534-546 in cysteine-rich repeat 3 of the CD18 antigen (integrin beta2 subunit; beta2 integrin). CD18 is a 90-95 kDa type I transmembrane protein expressed on all leukocytes.
Immunogen	Leukocytes of a patient suffering from a LGL-type leukemia.

Product Application Details	
Applications	Western Blot, Flow Cytometry, Immunohistochemistry, Immunohistochemistry-Frozen, Immunohistochemistry-Paraffin, Immunoprecipitation
Recommended Dilutions	Western Blot 1:100-1:2000, Flow Cytometry, Immunohistochemistry 1:10-1:500, Immunoprecipitation 1:10-1:500, Immunohistochemistry-Paraffin 1:10-1:500, Immunohistochemistry-Frozen 1:10-1:500
Application Notes	The reagent is designed for Flow Cytometry analysis of human blood cells using 20 ul reagent / 100 ul of whole blood or 10 ⁶ cells in a suspension.

Images

Flow Cytometry: Integrin beta 2/CD18 Antibody (MEM-48) [FITC] [NB500-380] - Surface staining of human peripheral blood with anti-CD18 (MEM-48) FITC.





Novus Biologicals USA

10730 E. Briarwood Avenue
Centennial, CO 80112
USA

Phone: 303.730.1950

Toll Free: 1.888.506.6887

Fax: 303.730.1966

nb-customerservice@bio-techne.com

Bio-Techne Canada

21 Canmotor Ave
Toronto, ON M8Z 4E6
Canada

Phone: 905.827.6400

Toll Free: 855.668.8722

Fax: 905.827.6402

canada.inquires@bio-techne.com

Bio-Techne Ltd

19 Barton Lane
Abingdon Science Park
Abingdon, OX14 3NB, United Kingdom

Phone: (44) (0) 1235 529449

Free Phone: 0800 37 34 15

Fax: (44) (0) 1235 533420

info.EMEA@bio-techne.com

General Contact Information

www.novusbio.com

Technical Support: nb-technical@bio-techne.com

Orders: nb-customerservice@bio-techne.com

General: novus@novusbio.com

Products Related to NB500-380

NBP1-96849	Mouse IgG1 Isotype Control (MG1) [FITC]
NBP2-52351-0.05mg	Recombinant Human Integrin beta 2/CD18 His Protein
210-TA-005	TNF-alpha [Unconjugated]
NBL1-12072	Integrin beta 2/CD18 Overexpression Lysate

Limitations

This product is for research use only and is not approved for use in humans or in clinical diagnosis. Primary Antibodies are guaranteed for 1 year from date of receipt.

For more information on our 100% guarantee, please visit www.novusbio.com/guarantee

Earn gift cards/discounts by submitting a review: www.novusbio.com/reviews/submit/NB500-380

Earn gift cards/discounts by submitting a publication using this product:
www.novusbio.com/publications

