

# Product Datasheet

## SSEA-1 Antibody (MEM-158) [FITC] NB500-377

Unit Size: 100 Tests

Store at 4C in the dark.

[www.novusbio.com](http://www.novusbio.com)



[technical@novusbio.com](mailto:technical@novusbio.com)

Protocols, Publications, Related Products, Reviews, Research Tools and Images at:  
[www.novusbio.com/NB500-377](http://www.novusbio.com/NB500-377)

Updated 10/23/2024 v.20.1

Earn rewards for product  
reviews and publications.

Submit a publication at [www.novusbio.com/publications](http://www.novusbio.com/publications)

Submit a review at [www.novusbio.com/reviews/destination/NB500-377](http://www.novusbio.com/reviews/destination/NB500-377)



**NB500-377**

SSEA-1 Antibody (MEM-158) [FITC]

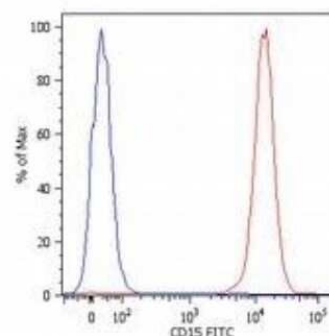
Product Information	
Unit Size	100 Tests
Concentration	Please see the vial label for concentration. If unlisted please contact technical services.
Storage	Store at 4C in the dark.
Clonality	Monoclonal
Clone	MEM-158
Preservative	0.9% Sodium Azide
Isotype	IgM
Conjugate	FITC
Purity	Size Exclusion Chromatography
Buffer	TBS and 0.2% (w/v) high grade BSA (protease free)

Product Description	
Host	Mouse
Gene ID	2526
Gene Symbol	FUT4
Species	Human, Bovine (Negative), Porcine (Negative), Sheep (Negative)
Specificity/Sensitivity	The antibody MEM-158 reacts with CD15, a cell membrane molecule 3-fucosyl-N-acetyllactosamine (3-FAL) strongly expressed on granulocytes, monocytes, macrophages, mast cells; it is also present on Langerhans cells and some myeloid precursors cells. HLDA VI; WS Code AS A053
Immunogen	Human granulocytes

Product Application Details	
Applications	Flow Cytometry, Immunoprecipitation
Recommended Dilutions	Flow Cytometry 20 ul/100 ul of whole blood or 10 <sup>6</sup> cells in suspension, Immunoprecipitation 1:10-1:500

**Images**

Flow Cytometry: CD15/Lewis X Antibody (MEM-158) [FITC] [NB500-377]  
- Fig. 1. Surface staining of human peripheral blood cells with anti-human CD15 (MEM-158) FITC. Cells in the granulocyte gate were used for analysis.





### **Novus Biologicals USA**

10730 E. Briarwood Avenue  
Centennial, CO 80112  
USA  
Phone: 303.730.1950  
Toll Free: 1.888.506.6887  
Fax: 303.730.1966  
nb-customerservice@bio-techne.com

### **Bio-Techne Canada**

21 Canmotor Ave  
Toronto, ON M8Z 4E6  
Canada  
Phone: 905.827.6400  
Toll Free: 855.668.8722  
Fax: 905.827.6402  
canada.inquires@bio-techne.com

### **Bio-Techne Ltd**

19 Barton Lane  
Abingdon Science Park  
Abingdon, OX14 3NB, United Kingdom  
Phone: (44) (0) 1235 529449  
Free Phone: 0800 37 34 15  
Fax: (44) (0) 1235 533420  
info.EMEA@bio-techne.com

### **General Contact Information**

www.novusbio.com  
Technical Support: nb-technical@bio-techne.com  
Orders: nb-customerservice@bio-techne.com  
General: novus@novusbio.com

### **Products Related to NB500-377**

---

NBP1-97174	Mouse IgM Isotype Control [FITC]
H00002526-Q01-10ug	Recombinant Human SSEA-1 GST (N-Term) Protein
DC140	CD14 [HRP]
NBP2-10793	SSEA-1 Overexpression Lysate

---

### **Limitations**

This product is for research use only and is not approved for use in humans or in clinical diagnosis. Primary Antibodies are guaranteed for 1 year from date of receipt.

For more information on our 100% guarantee, please visit [www.novusbio.com/guarantee](http://www.novusbio.com/guarantee)

Earn gift cards/discounts by submitting a review: [www.novusbio.com/reviews/submit/NB500-377](http://www.novusbio.com/reviews/submit/NB500-377)

Earn gift cards/discounts by submitting a publication using this product:  
[www.novusbio.com/publications](http://www.novusbio.com/publications)

