

Product Datasheet

LIME Antibody (LIME-10) - BSA Free NB500-343

Unit Size: 0.1 mg

Store at 4C. Do not freeze.

www.novusbio.com



technical@novusbio.com

Protocols, Publications, Related Products, Reviews, Research Tools and Images at:
www.novusbio.com/NB500-343

Updated 9/9/2025 v.20.1

Earn rewards for product
reviews and publications.

Submit a publication at www.novusbio.com/publications

Submit a review at www.novusbio.com/reviews/destination/NB500-343



NB500-343**LIME Antibody (LIME-10) - BSA Free**

Product Information	
Unit Size	0.1 mg
Concentration	1.0 mg/ml
Storage	Store at 4C. Do not freeze.
Clonality	Monoclonal
Clone	LIME-10
Preservative	15mM Sodium Azide
Isotype	IgG2a
Purity	Protein A purified
Buffer	Phosphate buffered saline (PBS), pH 7.4
Target Molecular Weight	30 kDa

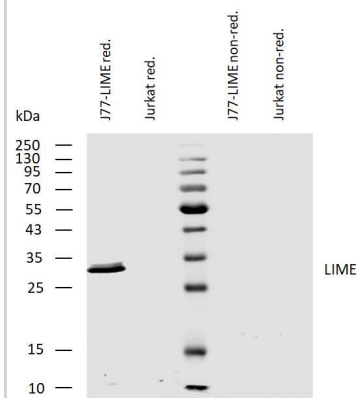
Product Description	
Description	Novus Biologicals Mouse LIME Antibody (LIME-10) - BSA Free (NB500-343) is a monoclonal antibody validated for use in IHC, WB and Flow. All Novus Biologicals antibodies are covered by our 100% guarantee.
Host	Mouse
Gene ID	54923
Gene Symbol	LIME1
Species	Human
Specificity/Sensitivity	The antibody LIME-10 reacts with the cytoplasmic domain of LIME, a 30 kDa Lck-interacting transmembrane adaptor expressed by T cells.
Immunogen	COOH-terminal peptide comprising residues 281-296 of the human LIME conjugated to keyhole limpet hemocyanin.

Product Application Details	
Applications	Western Blot, Immunohistochemistry-Paraffin, Flow Cytometry, Immunohistochemistry
Recommended Dilutions	Western Blot Reducing conditions; 1ug/ml, Flow Cytometry 1-5 ug/ml, Immunohistochemistry, Immunohistochemistry-Paraffin 10 ug/ml
Application Notes	Western Blot: Predicted molecular weight 32.3 kDa.

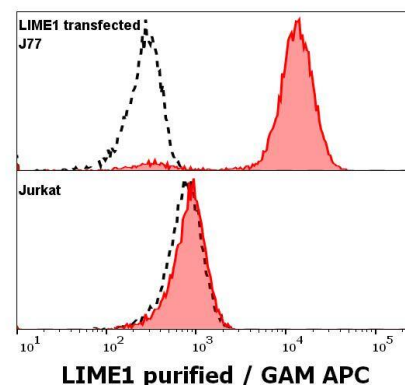


Images

Analysis of human LIME using mouse monoclonal antibody LIME-10 on lysates of J77-LIME transfectants and Jurkat cells under reducing and non-reducing conditions. Nitrocellulose membrane was probed with 1 µg/ml of mouse monoclonal antibody followed by IRDye800-conjugated anti-mouse secondary antibody. LIME was detected around 30 kDa.



Flow Cytometry: LIME Antibody (LIME-10) - BSA Free [NB500-343] - Anti-Hu LIME1 purified antibody (clone LIME-10) (concentration in sample 1 µg/ml, red-filled histogram) binds specifically to intracellular LIME1 in transfected cells (upper panel), but not to Jurkat cells (lower panel). Level of non-specific binding was assessed using Mouse IgG1 isotype control purified antibody (MOPC-21) under same conditions (concentration in sample 1 µg/ml, black-dashed histogram).





Novus Biologicals USA

10730 E. Briarwood Avenue
Centennial, CO 80112
USA
Phone: 303.730.1950
Toll Free: 1.888.506.6887
Fax: 303.730.1966
nb-customerservice@bio-techne.com

Bio-Techne Canada

21 Canmotor Ave
Toronto, ON M8Z 4E6
Canada
Phone: 905.827.6400
Toll Free: 855.668.8722
Fax: 905.827.6402
canada.inquires@bio-techne.com

Bio-Techne Ltd

19 Barton Lane
Abingdon Science Park
Abingdon, OX14 3NB, United Kingdom
Phone: (44) (0) 1235 529449
Free Phone: 0800 37 34 15
Fax: (44) (0) 1235 533420
info.EMEA@bio-techne.com

General Contact Information

www.novusbio.com
Technical Support: nb-technical@bio-
techne.com
Orders: nb-customerservice@bio-techne.com
General: novus@novusbio.com

Products Related to NB500-343

HAF007	Goat anti-Mouse IgG Secondary Antibody [HRP]
NB720-B	Rabbit anti-Mouse IgG (H+L) Secondary Antibody [Biotin]
NBP1-96778	Mouse IgG2a Isotype Control (M2A)
202-IL-010	IL-2 [Unconjugated]

Limitations

This product is for research use only and is not approved for use in humans or in clinical diagnosis. Primary Antibodies are guaranteed for 1 year from date of receipt.

For more information on our 100% guarantee, please visit www.novusbio.com/guarantee

Earn gift cards/discounts by submitting a review: www.novusbio.com/reviews/submit/NB500-343

Earn gift cards/discounts by submitting a publication using this product:
www.novusbio.com/publications

