

Product Datasheet

PAG1 Antibody (MEM-255) - BSA Free NB500-342

Unit Size: 0.1 mg

Store at 4C. Do not freeze.

www.novusbio.com



technical@novusbio.com

Protocols, Publications, Related Products, Reviews, Research Tools and Images at:
www.novusbio.com/NB500-342

Updated 9/9/2025 v.20.1

Earn rewards for product
reviews and publications.

Submit a publication at www.novusbio.com/publications

Submit a review at www.novusbio.com/reviews/destination/NB500-342



NB500-342

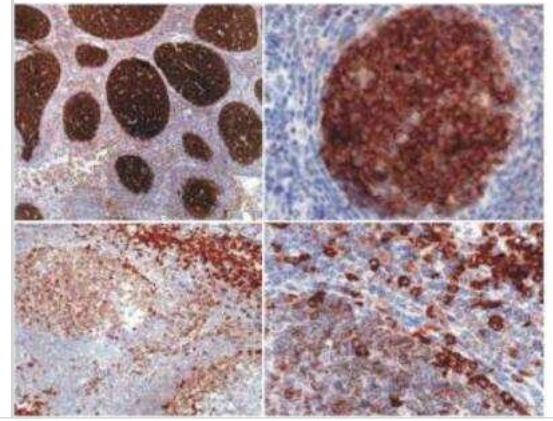
PAG1 Antibody (MEM-255) - BSA Free

Product Information	
Unit Size	0.1 mg
Concentration	1.0 mg/ml
Storage	Store at 4C. Do not freeze.
Clonality	Monoclonal
Clone	MEM-255
Preservative	15mM Sodium Azide
Isotype	IgG2a
Purity	Protein A purified
Buffer	Phosphate buffered saline (PBS), pH 7.4
Product Description	
Description	Novus Biologicals Mouse PAG1 Antibody (MEM-255) - BSA Free (NB500-342) is a monoclonal antibody validated for use in IHC, WB and Flow. All Novus Biologicals antibodies are covered by our 100% guarantee.
Host	Mouse
Gene ID	55824
Gene Symbol	PAG1
Species	Human, Bovine (Negative), Mouse (Negative), Rat (Negative)
Specificity/Sensitivity	The antibody MEM-255 recognizes an epitope (aa 235-280) of Csk-binding protein (Cbp) located in the cytoplasmic domain, also known as protein associated with glycosphingolipid-enriched microdomains (PAG).
Immunogen	Recombinant intracellular fragment, corresponding to amino acids 97-432 of Human Cbp/PAG (NM_018440.3).
Product Application Details	
Applications	Western Blot, Immunohistochemistry-Paraffin, Flow (Intracellular), Immunohistochemistry, CyTOF-ready
Recommended Dilutions	Western Blot 1:1000, Immunohistochemistry 1:10-1:500, Immunohistochemistry-Paraffin 1:200, Flow (Intracellular) 2 ug/ml, CyTOF-ready
Application Notes	Purity is > 95% (by SDS-PAGE). Flow Cytometry - intracellular staining, permeabilization required Western Blot - Csk binding protein is an ubiquitously expressed 46 kDa transmembrane adaptor protein present in membrane microdomains (rafts), which however migrates on SDS-PAGE gels anomalously as an 80 kDa molecule. This antibody is CyTOF ready.



Images

Immunohistochemistry: PAG Antibody (MEM-255) [NB500-342] - Cbp/PAG is expressed in germinal centers of lymph node lymphoid follicle and in follicular lymphoma (it is absent from mantle zone). Cbp/PAG is also expressed more weakly in T cells in tonsil and the thymic medulla.





Novus Biologicals USA

10730 E. Briarwood Avenue
Centennial, CO 80112
USA
Phone: 303.730.1950
Toll Free: 1.888.506.6887
Fax: 303.730.1966
nb-customerservice@bio-techne.com

Bio-Techne Canada

21 Canmotor Ave
Toronto, ON M8Z 4E6
Canada
Phone: 905.827.6400
Toll Free: 855.668.8722
Fax: 905.827.6402
canada.inquires@bio-techne.com

Bio-Techne Ltd

19 Barton Lane
Abingdon Science Park
Abingdon, OX14 3NB, United Kingdom
Phone: (44) (0) 1235 529449
Free Phone: 0800 37 34 15
Fax: (44) (0) 1235 533420
info.EMEA@bio-techne.com

General Contact Information

www.novusbio.com
Technical Support: nb-technical@bio-techne.com
Orders: nb-customerservice@bio-techne.com
General: novus@novusbio.com

Products Related to NB500-342

HAF007	Goat anti-Mouse IgG Secondary Antibody [HRP]
NB720-B	Rabbit anti-Mouse IgG (H+L) Secondary Antibody [Biotin]
NBP1-96778	Mouse IgG2a Isotype Control (M2A)
NB500-342UV	PAG1 Antibody (MEM-255) [DyLight 350]

Limitations

This product is for research use only and is not approved for use in humans or in clinical diagnosis. Primary Antibodies are guaranteed for 1 year from date of receipt.

For more information on our 100% guarantee, please visit www.novusbio.com/guarantee

Earn gift cards/discounts by submitting a review: www.novusbio.com/reviews/submit/NB500-342

Earn gift cards/discounts by submitting a publication using this product:
www.novusbio.com/publications

